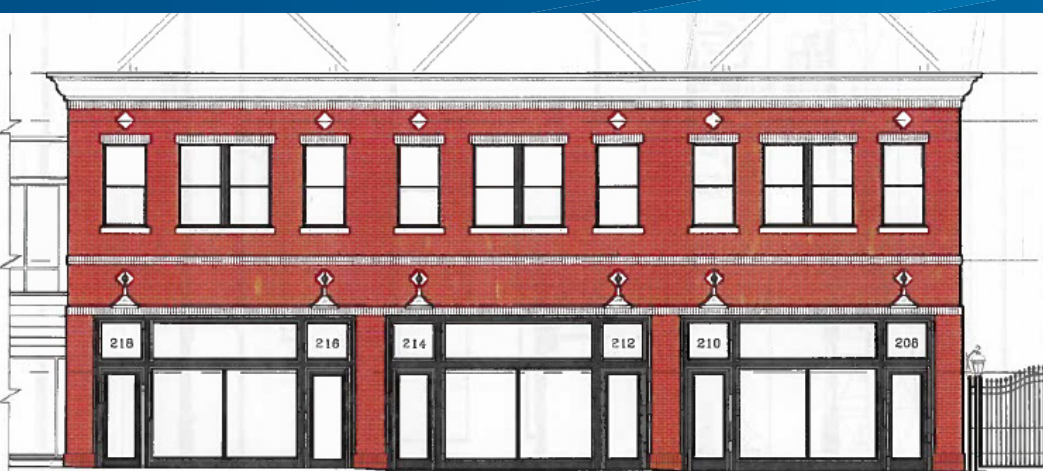


FOR LEASE > RETAIL & OFFICE SPACE



# Indigo Square - North Highland

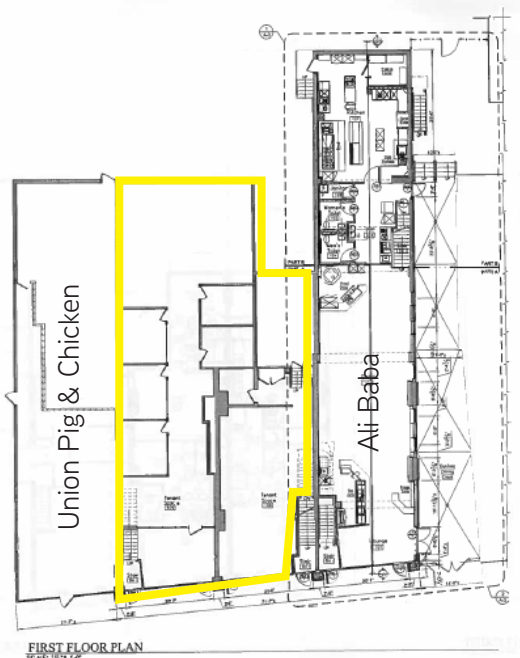
200 • 204 • 208-218 • NORTH HIGHLAND AVENUE, PITTSBURGH, PA 15206



## Property Information

### 208-218 North Highland

- > 1,500 SF & 2,100 SF available
- > Spaces can be combined
- > New facade renovations underway
- > New brick and aluminum storefronts
- > Join Union Pig & Chicken and Ali Baba

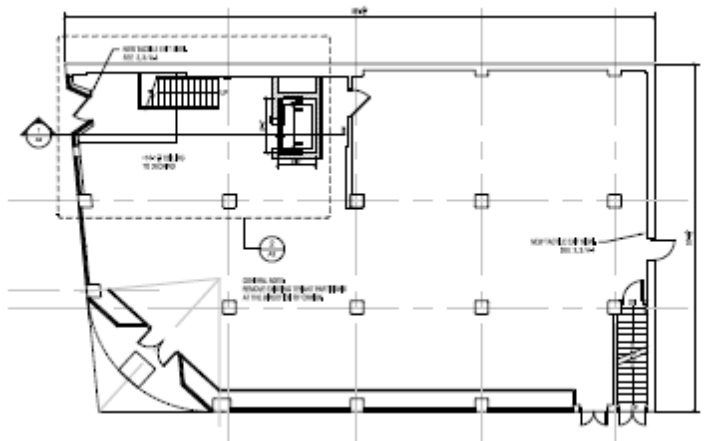


### 200 North Highland - 7,400 SF Retail/Office Space

- > First Floor | 3,700 SF - High ceilings - Patio area
- > Second Floor | 3,700 SF - Elevator access
- > Space consists of two separate suites that can be combined to form one larger space
- > Prime corner location

### 204 North Highland - 3,600 SF Office Space

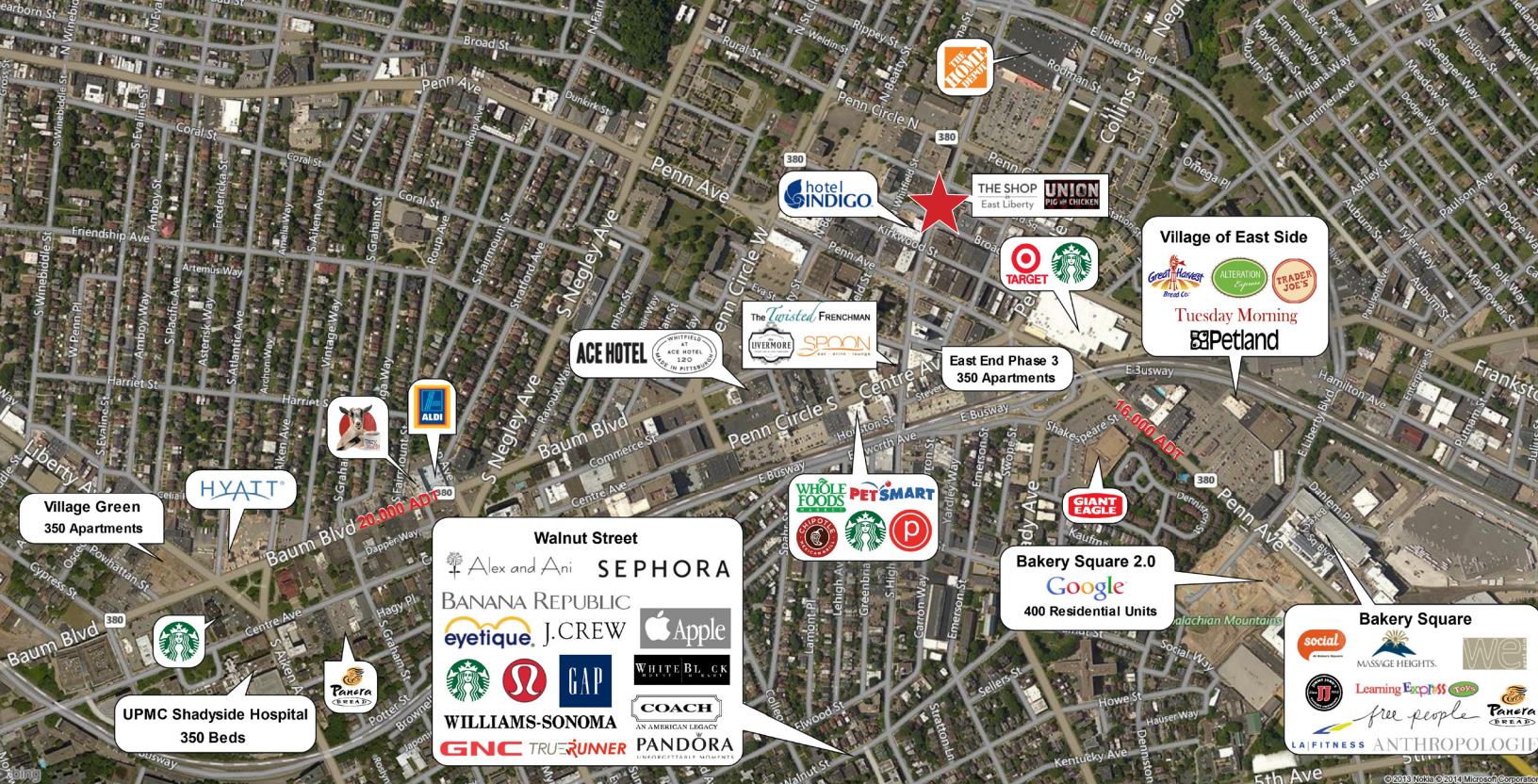
- > Space has elevator access



PAUL HORAN  
FOUNDING PRINCIPAL | PITTSBURGH  
OFFICE BROKERAGE  
412 321 4200 | EXT. 205  
paul.horan@colliers.com

MARK E. ANDERSON  
VICE PRESIDENT | PITTSBURGH  
RETAIL BROKERAGE  
412 321 4200 | EXT. 222  
MarkE.Anderson@colliers.com

COLLIERS INTERNATIONAL | PITTSBURGH  
Two Gateway Center  
603 Stanwix Street, Suite 125  
Pittsburgh, PA 15222  
www.colliers.com/pittsburgh



## Demographics

	<u>1 Mile</u>	<u>3 Miles</u>	<u>5 Miles</u>
Population	33,077	180,033	338,783
Number of Households	17,389	83,203	136,344
Average Household Income	\$63,240	\$65,640	\$63,374
Daytime Population	29,176	211,492	474,185

## Contact Us

PAUL HORAN  
 FOUNDING PRINCIPAL | PITTSBURGH  
 OFFICE BROKERAGE  
 412 321 4200 | EXT. 205  
[paul.horan@colliers.com](mailto:paul.horan@colliers.com)

MARK E. ANDERSON  
 VICE PRESIDENT | PITTSBURGH  
 RETAIL BROKERAGE  
 412 321 4200 | EXT. 222  
[MarkE.Anderson@colliers.com](mailto:MarkE.Anderson@colliers.com)

COLLIERS INTERNATIONAL | PITTSBURGH  
 Two Gateway Center, Suite 125  
 603 Stanwix Street  
 Pittsburgh, PA 15222  
[www.colliers.com/pittsburgh](http://www.colliers.com/pittsburgh)



The information contained herein has been given to us by the owner of the property or other sources we deem reliable. We have no reason to doubt its accuracy, but we do not guarantee it. All information should be verified prior to purchase or lease.

