

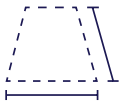
For Lease

Groves Medical Plaza 13475 Southern Blvd Loxahatchee Groves, FL

Medical office space available in Class A building in Loxahatchee Groves

Colliers is proud to present the lease of Groves Medical Plaza in Loxahatchee Groves, Florida. The 2-story 22,000 SF medical/professional building is situated on the northeast corner of Southern Boulevard and Big Blue Trace/F Road. This property is adjacent to the Palms West Hospital and is in close proximity to many of the area's amenities.

Property Highlights



±3,964 SF space available



Dramatic architectural details



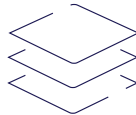
Hurricane impact windows



Backup standby generator



Signage available



Efficient floor plates



Abundant parking



Generous improvement allowance



Easy access at signalized intersection

Asking price:

\$25.00
PSF NNN

Contact us:

Gary Gottlieb, Sior

Executive Vice President
Direct: +1 561 353 3636
Mobile: +1 561 889 5707
gary.gottlieb@colliers.com

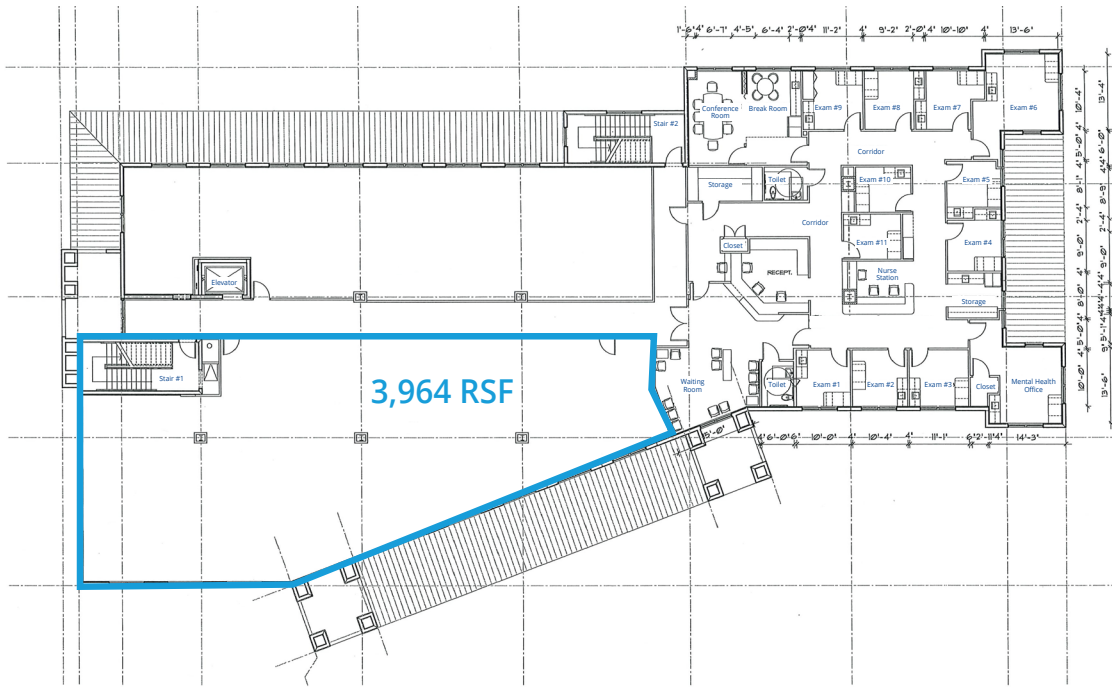
Marc Fechter

Vice President
Direct: +1 561 353 3649
Mobile: +1 443 983 5042
marc.fechter@colliers.com

Colliers

2385 NW Executive Center Drive
Suite 350
Boca Raton, FL 33431
colliers.com

Floor Plan - Suite 200



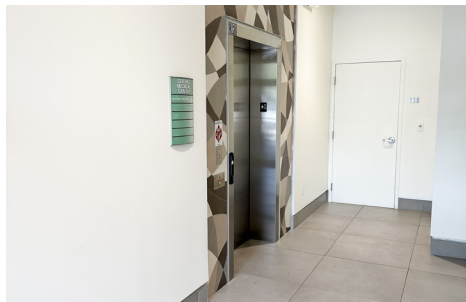
3,964 RSF - \$25.00 NNN

Suite Highlights:

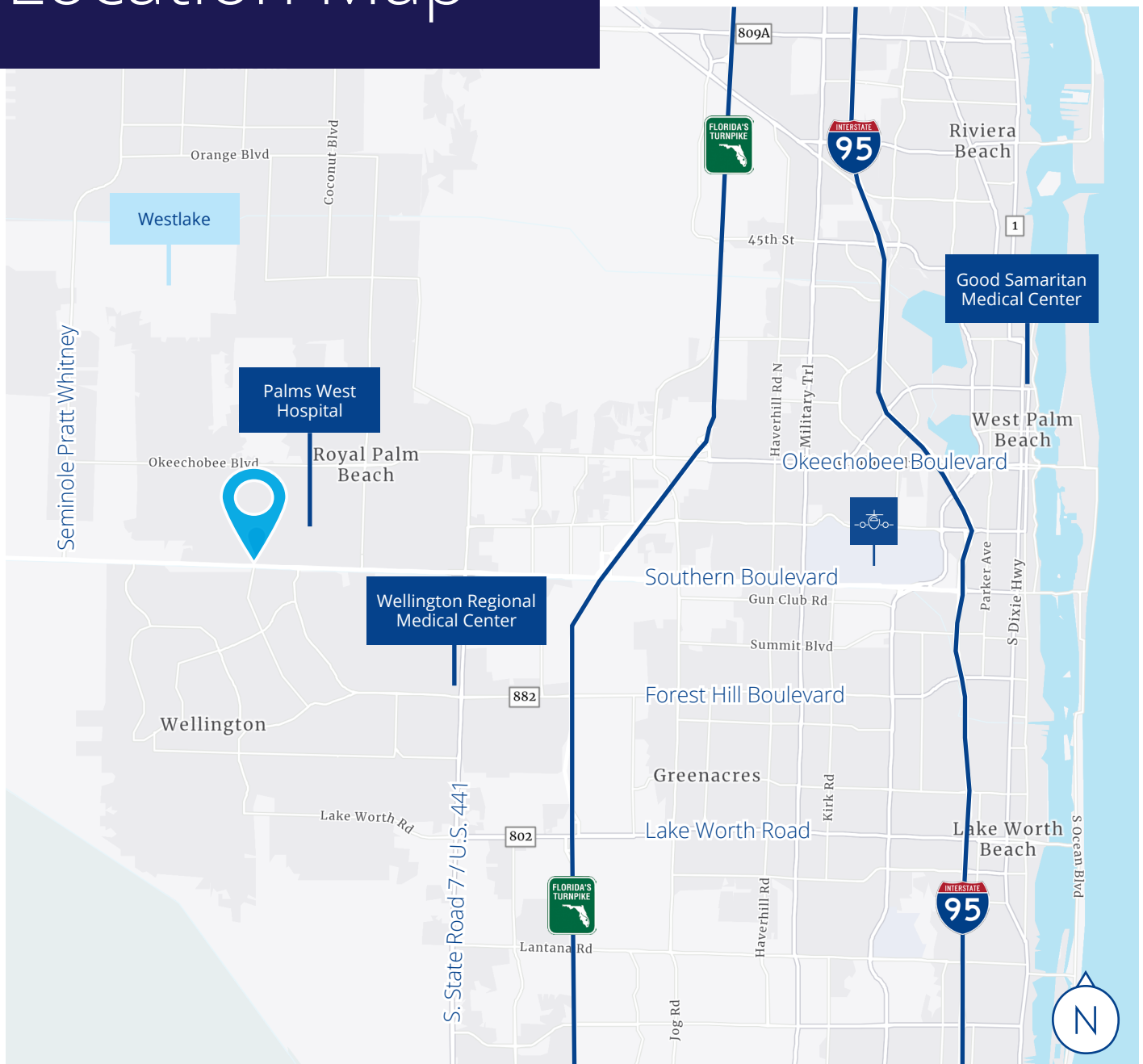
- Shell condition
- Generous Tenant Improvement Allowance



Exterior Photos



Location Map



Demographic Snapshot - 3-mile radius



2023 Total
Population

58,210



2028 Total
Population

57,061



2023 Avg. HH
Income

\$124,875



2027 Avg. HH
Income

\$144,660