



FOR LEASE

## CROWN CENTER & FROST BUILDING

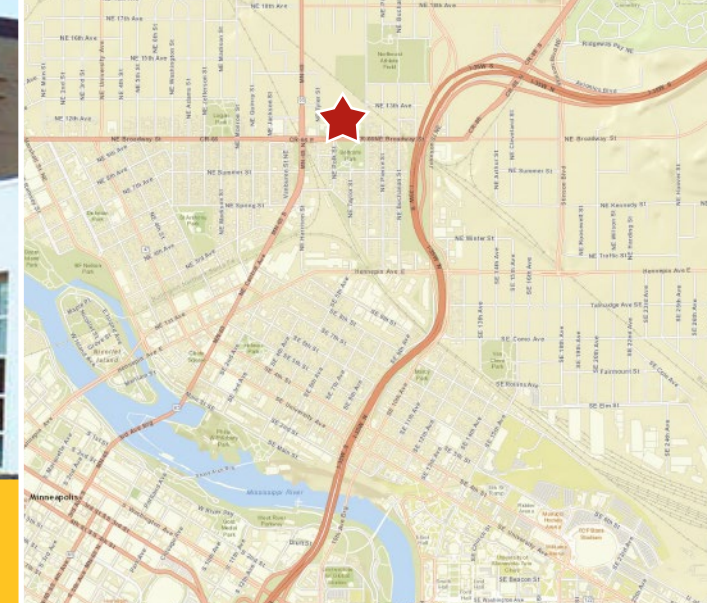
**1209 - 1229 Tyler St NE**

Minneapolis, MN 55413

JIM KENNEY | 952 897 7822 | [jim.kenney@colliers.com](mailto:jim.kenney@colliers.com)







**1209 - 1229 Tyler St NE, Minneapolis, MN**

**FOR LEASE**

## Comments

*Crown Center & the Frost Building form a unique office campus setting created by the adaptive re-use and renovations of historic industrial buildings into a now thriving office environment.*

## Site Information

### PROPERTY ADDRESS:

1209 - 1229 Tyler St NE  
Minneapolis, MN 55413

### BUILDING SIZE:

**CROWN:** 140,669 total square feet  
**FROST:** 49,611 total square feet

### PARKING:

Free surface parking

### NET RENTAL RATES:

\$12.00 - \$18.00 PSF

### 2018 EST. CAM & REAL ESTATE TAX:

Crown: \$5.01  
Frost: \$4.92

### BUILDING AMENITIES:

- > Open, bright boutique spaces
- > Exposed brick and hardwood floors
- > Bauhaus Brew Labs on site
- > Steps to: **612 Brew, Spyhouse Coffee, CorePower Yoga, Snap Fitness** and more!
- > The Shed outdoor tenant plaza
- > Ample, free surface parking
- > Convenient access to I-94 and I-35W
- > Minutes from Downtown Minneapolis and North Loop

This document/email has been prepared by Colliers International for advertising and general information only. Colliers International makes no guarantees, representations or warranties of any kind, expressed or implied, regarding the information including, but not limited to, warranties of content, accuracy and reliability. Any interested party should undertake their own inquiries as to the accuracy of the information. Colliers International excludes unequivocally all inferred or implied terms, conditions and warranties arising out of this document and excludes all liability for loss and damages arising there from. This publication is the copyrighted property of Colliers International and /or its licensor(s). © 2016. All rights reserved. This communication is not intended to cause or induce breach of an existing listing agreement.

## Contact Us

**JIM KENNEY**  
952 897 7822  
[jim.kenney@colliers.com](mailto:jim.kenney@colliers.com)



COLLIERS INTERNATIONAL  
900 2nd Avenue S, Suite 1575  
Minneapolis, MN 55402  
[www.colliers.com/msp](http://www.colliers.com/msp)

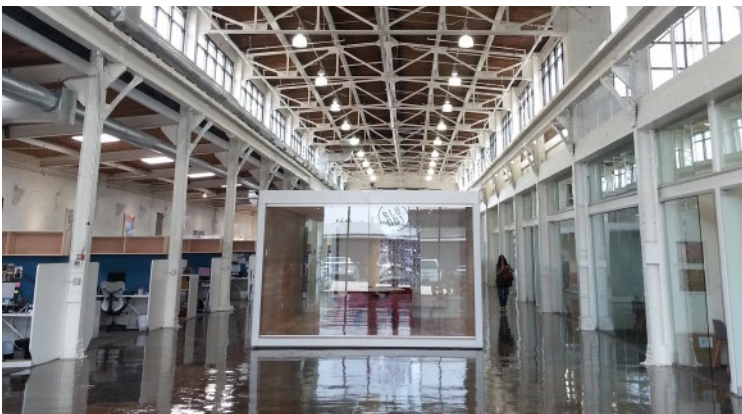


**Photos |** 1209 - 1229 Tyler St NE, Minneapolis, MN

FOR LEASE



Located in the artistic NE neighborhood, Crown Center & Frost Building offer creative, appealing and affordable office spaces.



## Contact Us

JIM KENNEY  
952 897 7822  
[jim.kenney@colliers.com](mailto:jim.kenney@colliers.com)

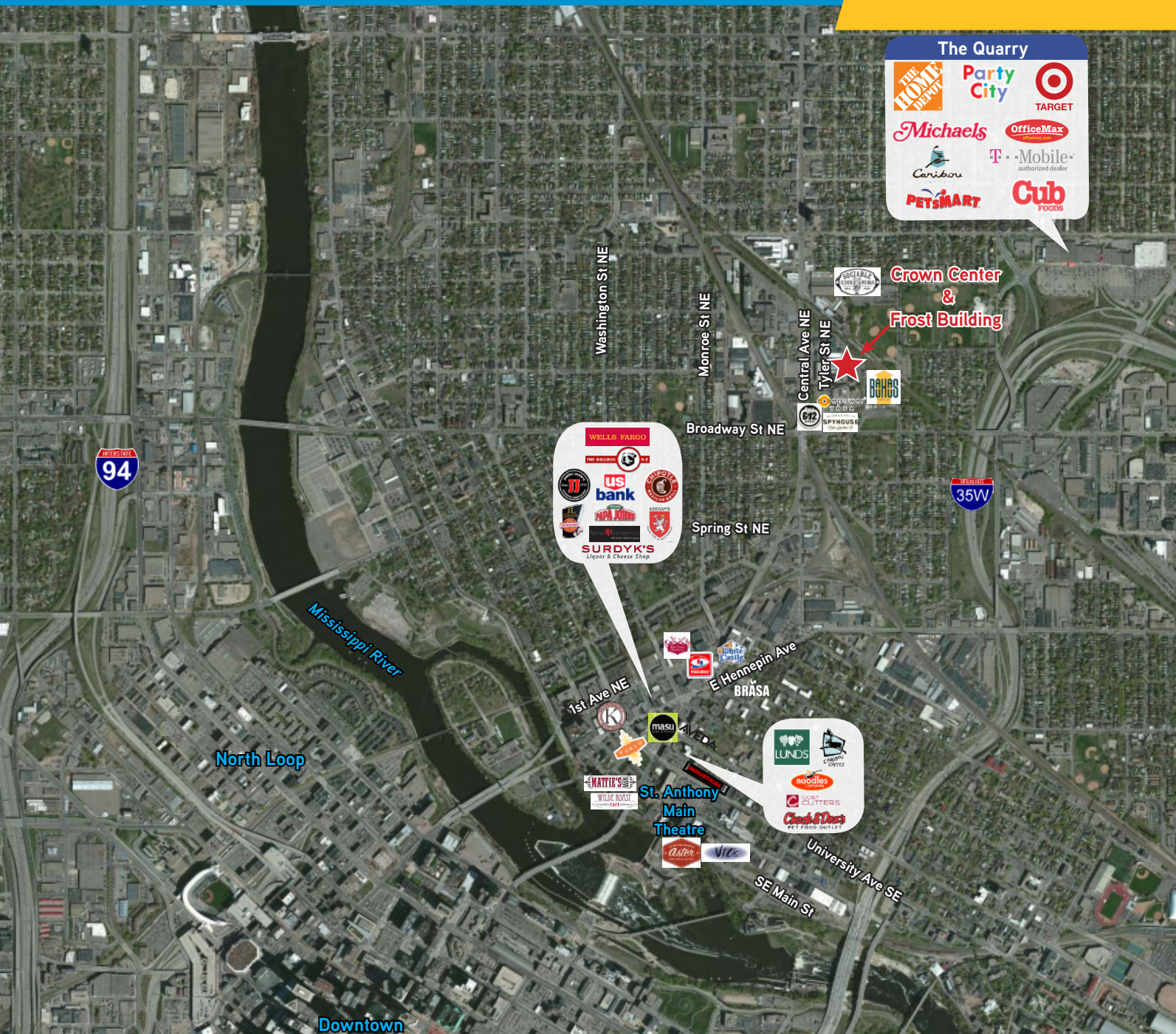


COLLIERS INTERNATIONAL  
900 2nd Avenue S, Suite 1575  
Minneapolis, MN 55402  
[www.colliers.com/msp](http://www.colliers.com/msp)



**Aerial |** 1209 - 1229 Tyler St NE, Minneapolis, MN

FOR LEASE



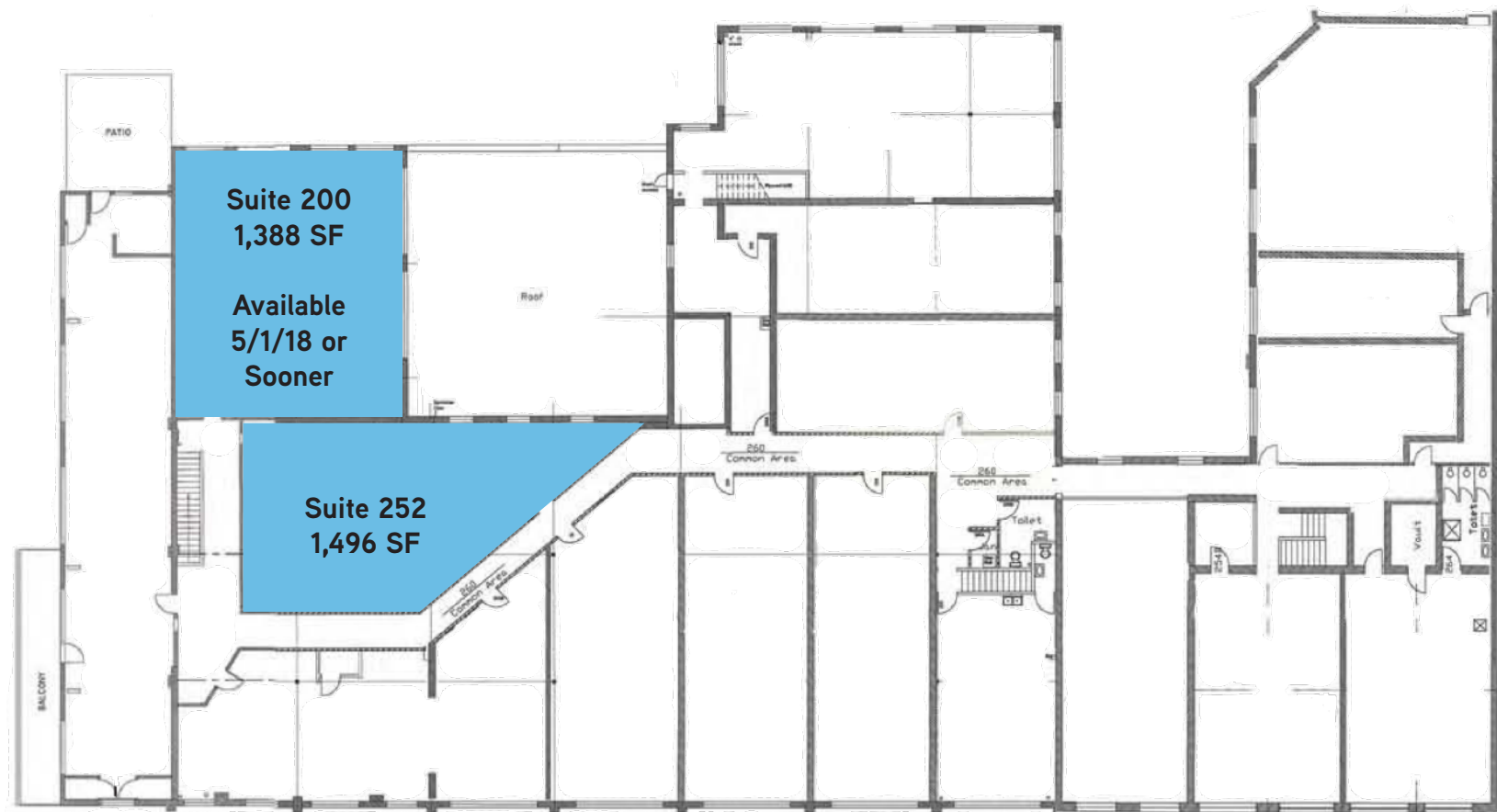
## Contact Us

JIM KENNEY  
952 897 7822  
[jim.kenney@colliers.com](mailto:jim.kenney@colliers.com)



COLLIERS INTERNATIONAL  
900 2nd Avenue S, Suite 1575  
Minneapolis, MN 55402  
[www.colliers.com/msp](http://www.colliers.com/msp)





## Contact Us

JIM KENNEY  
952 897 7822  
[jim.kenney@colliers.com](mailto:jim.kenney@colliers.com)





Contact Us

JIM KENNEY  
952 897 7822  
[jim.kenney@colliers.com](mailto:jim.kenney@colliers.com)

