

FOR LEASE > MEDICAL OFFICE

OAKWOOD MEDICAL CENTER

811 OAKWOOD DRIVE | ROCHESTER, MI



ONE QUARTER MILE TO CRITTENTON HOSPITAL

> PROPERTY HIGHLIGHTS

- Up to 8,242 SF Available Immediately
- Renovated Office With Existing Medical Suites Ranging From 800 SF to 2,470 SF
- Aggressive Lease Rates
- Ample Parking
- Located Near the Shops and Restaurants at N. Livernois Road and Walton Blvd.

COLLIERS INTERNATIONAL
2 Corporate Drive | Suite 300
Southfield, Michigan 48076

For More Information Call:

SHERIDAN BURTON
PHONE 248 540 1000 EXT 1852
sheridan.burton@colliers.com



colliers.com/detroit



FOR LEASE > MEDICAL OFFICE

OAKWOOD MEDICAL CENTER

811 OAKWOOD DRIVE | ROCHESTER, MI



> PROPERTY PHOTOS



SHERIDAN BURTON
PHONE 248 540 1000 EXT 1852
sheridan.burton@colliers.com



COLLIERS INTERNATIONAL
2 Corporate Dr. | Suite 300
Southfield, Michigan 48076



OAKWOOD MEDICAL CENTER

811 OAKWOOD DRIVE
ROCHESTER, MI

- Up to 8,242 SF Available Immediately
- Renovated Office With Existing Medical Suites
- Aggressive Lease Rates
- Ample Parking



SUITE NO.	AVAILABLE SF	LEASE RATE (\$/SF)	OCCUPANCY
Suite 104	800	\$14.00/SF Gross	Immediate
Suite 202	1,406	\$14.00/SF Gross	Immediate
Suite 203	1,127	\$14.00/SF Gross	Immediate
Suite 301	2,439	\$14.00/SF Gross	Immediate
Suite 302	2,470	\$14.00/SF Gross	Immediate

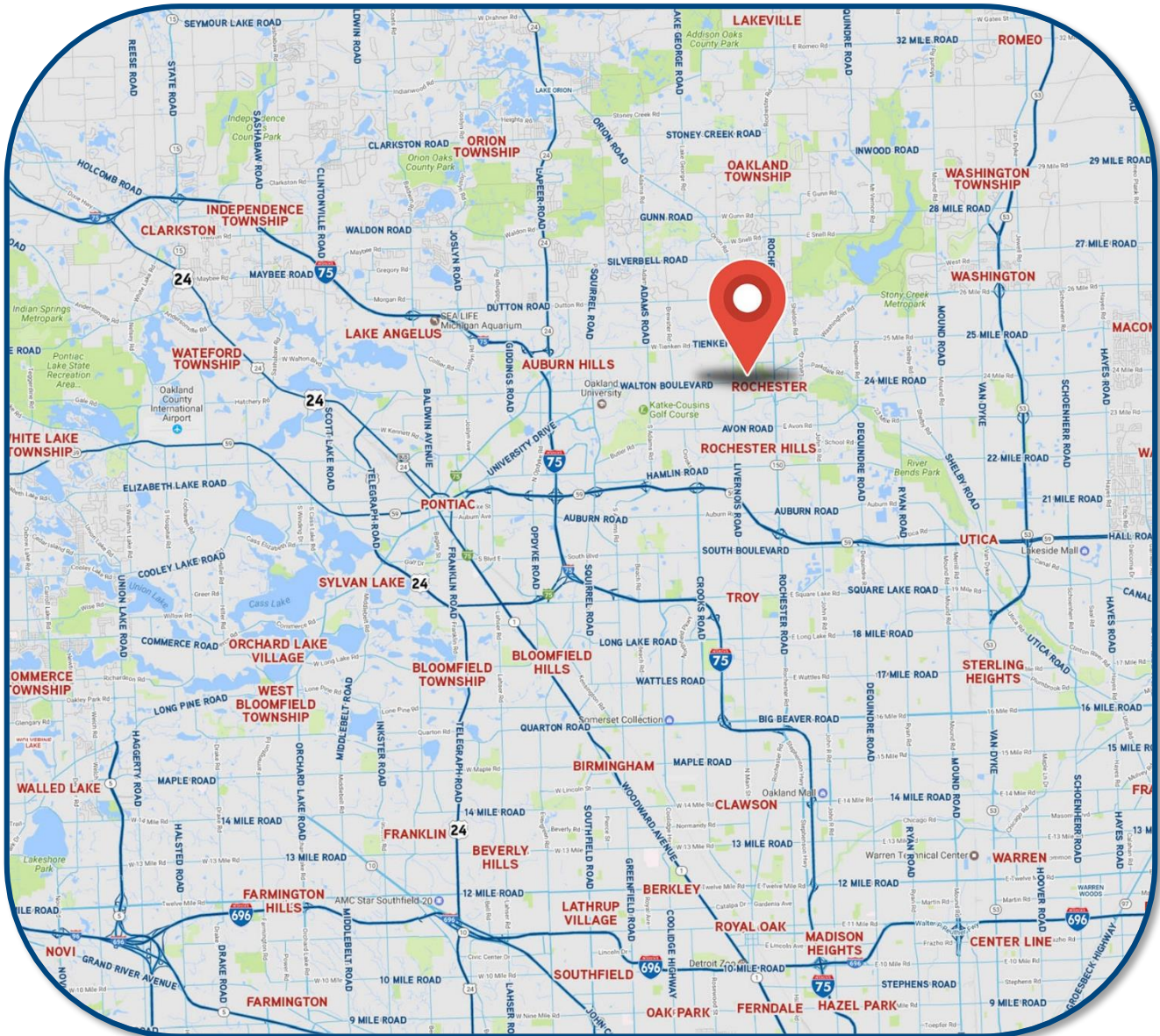
FOR LEASE > MEDICAL OFFICE

OAKWOOD MEDICAL CENTER

811 OAKWOOD DRIVE | ROCHESTER, MI



> LOCATION MAP



SHERIDAN BURTON
PHONE 248 540 1000 EXT 1852
sheridan.burton@colliers.com



COLLIERS INTERNATIONAL
2 Corporate Dr. | Suite 300
Southfield, Michigan 48076

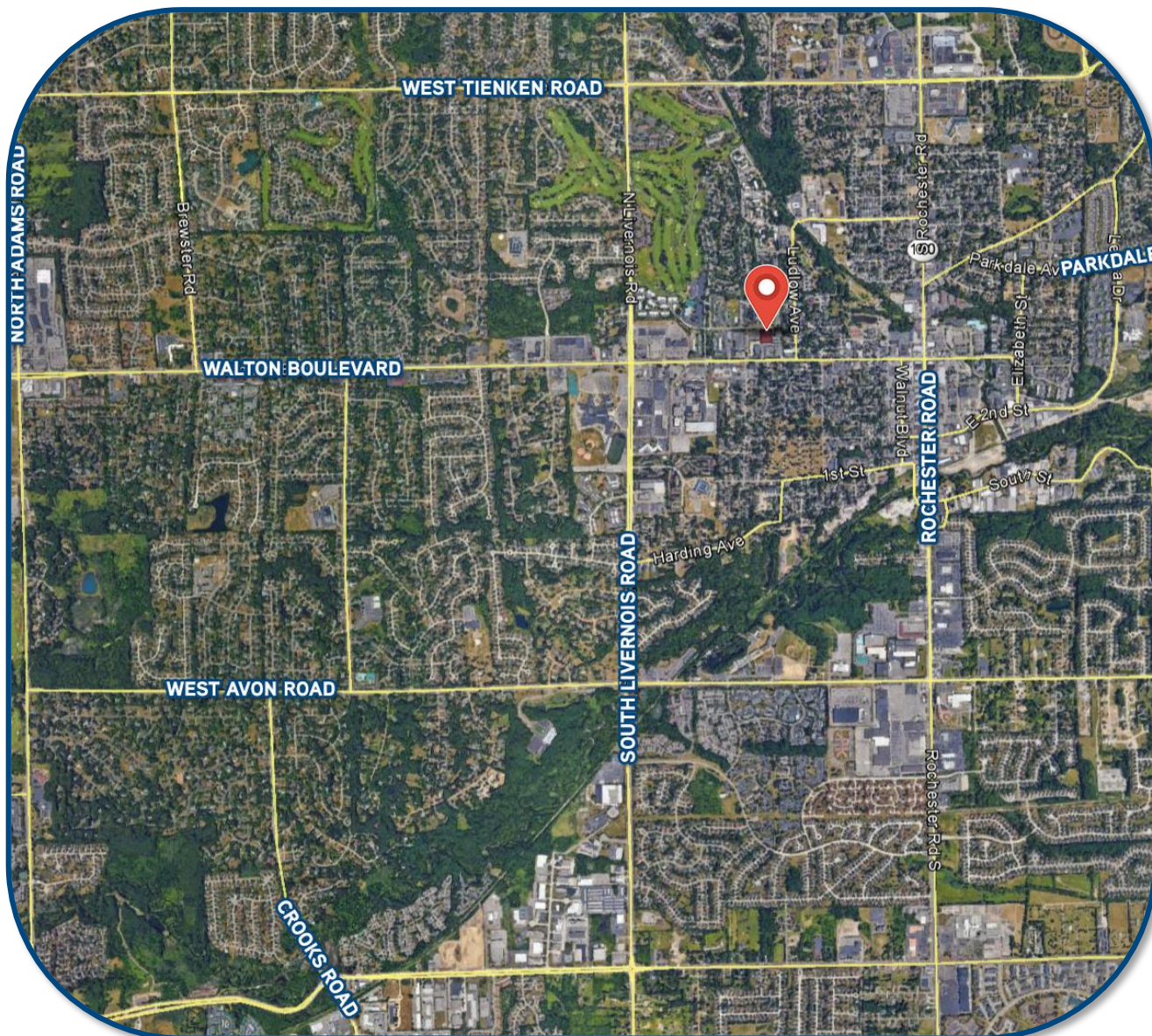
FOR LEASE > MEDICAL OFFICE

OAKWOOD MEDICAL CENTER

811 OAKWOOD DRIVE | ROCHESTER, MI



> AERIAL MAP



SHERIDAN BURTON
PHONE 248 540 1000 EXT 1852
sheridan.burton@colliers.com



COLLIERS INTERNATIONAL
2 Corporate Dr. | Suite 300
Southfield, Michigan 48076

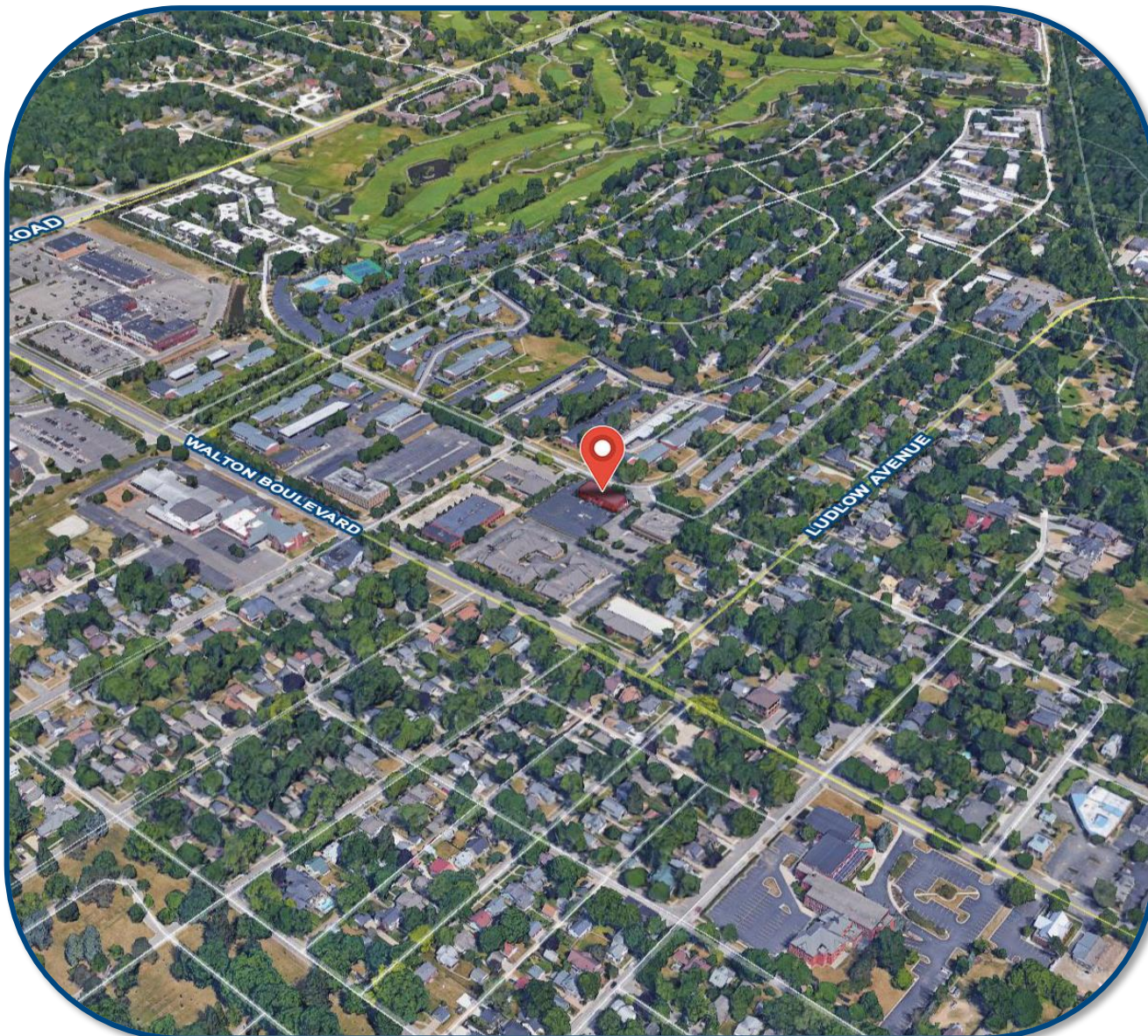
FOR LEASE > MEDICAL OFFICE

OAKWOOD MEDICAL CENTER

811 OAKWOOD DRIVE | ROCHESTER, MI



> BIRD'S EYE VIEW



SHERIDAN BURTON
PHONE 248 540 1000 EXT 1852
sheridan.burton@colliers.com



COLLIERS INTERNATIONAL
2 Corporate Dr. | Suite 300
Southfield, Michigan 48076

Office Availability

For Lease

Oakwood Medical Center

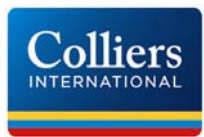
811 Oakwood Drive

Rochester, MI 48307



Sale Price:#fl(
Lease Rate : \$14.00 Gross
Gross Sq Ft: 19,000
Vacant Sq Ft: 8,242
Min Available Sq Ft: 800
Max Contiguous Sq Ft: 2,470
% Occupied: 57%
Date Built/Rehab: 1973 /
T I Allowance: TBD
Pass Thrus: TBD
Property Taxes/Year: 1.92
Parking: 70 Spaces

For more information, contact:



Sheridan Burton

sheridan.burton@colliers.com

(248) 540-1000

2 Corporate Drive
Suite 300
Southfield, MI 48076
248 540 1000

400 E. Washington St.
Ann Arbor, MI 48104
734 994 3100

County: Oakland
Crossroads: Oakwood and Helen Street

- Up to 8,242 SF Available Immediately
- Renovated Office With Existing Medical Suites Ranging From 800 SF to 2,470 SF
- Aggressive Lease Rates
- Ample Parking
- Located Near the Shops and Restaurants at N. Livernois Road and Walton Blvd.

Site Status: Existing
Acres: 0.14
Zoning: B-I
Sub-Type: Medical
Floors: 3
Basement:
Class:

www.colliers.com