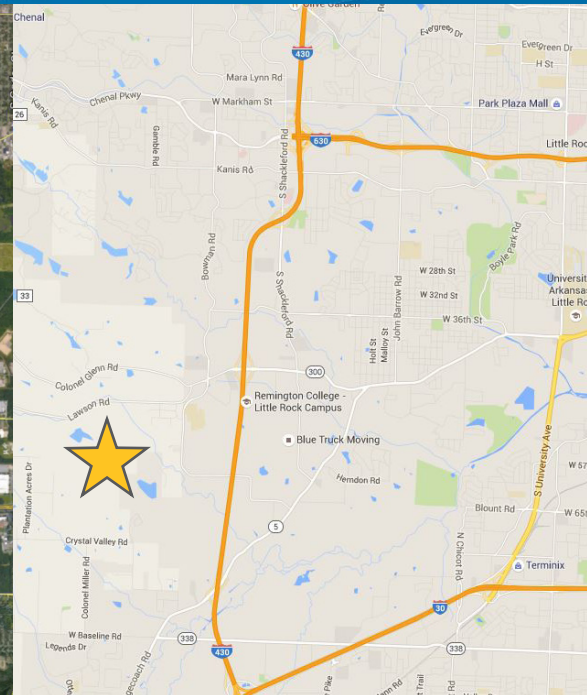
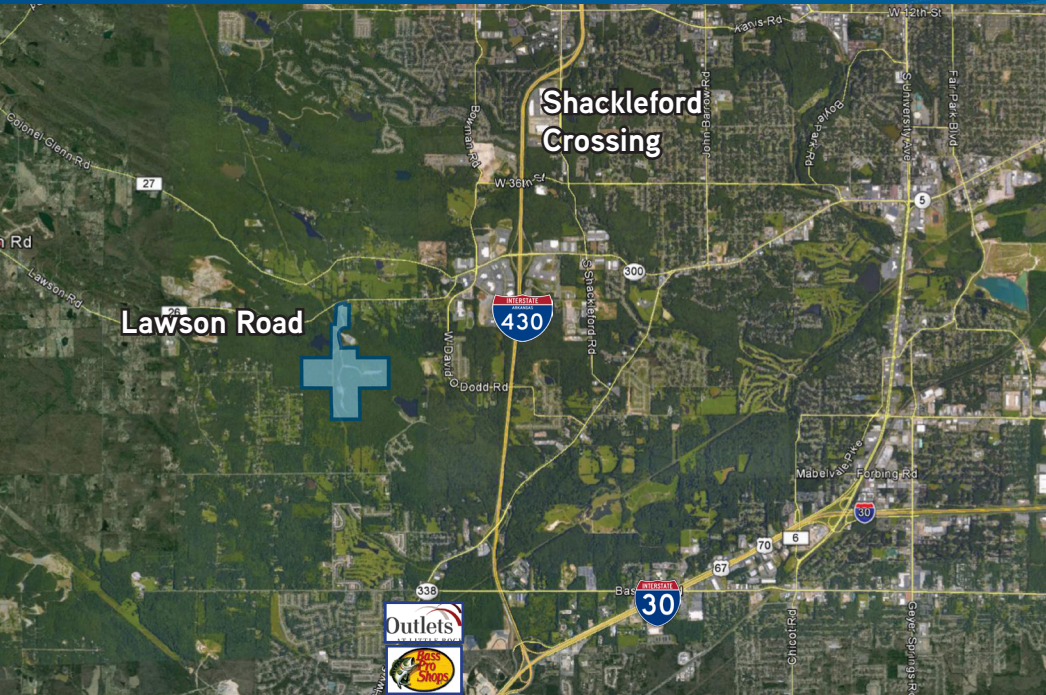


FOR SALE > LAND > WEST LITTLE ROCK



Land for Development

LAWSON ROAD, LITTLE ROCK, AR



Offering

Land: +/- 200 acres located south of Lawson Road

MAY BE SUBDIVIDED

Sale Price: \$5,662,800 (\$0.65/SF)

Amenities & Information

- > Suitable for office park development
- > Zoning: Single-family
- > 1.5 miles from I-430
- > Rolling topography with vistas
- > Redundant power (substation adjacent to site)
- > **Primary roads and storm drainage infrastructure in place**

Contact Us

LISTING AGENTS:

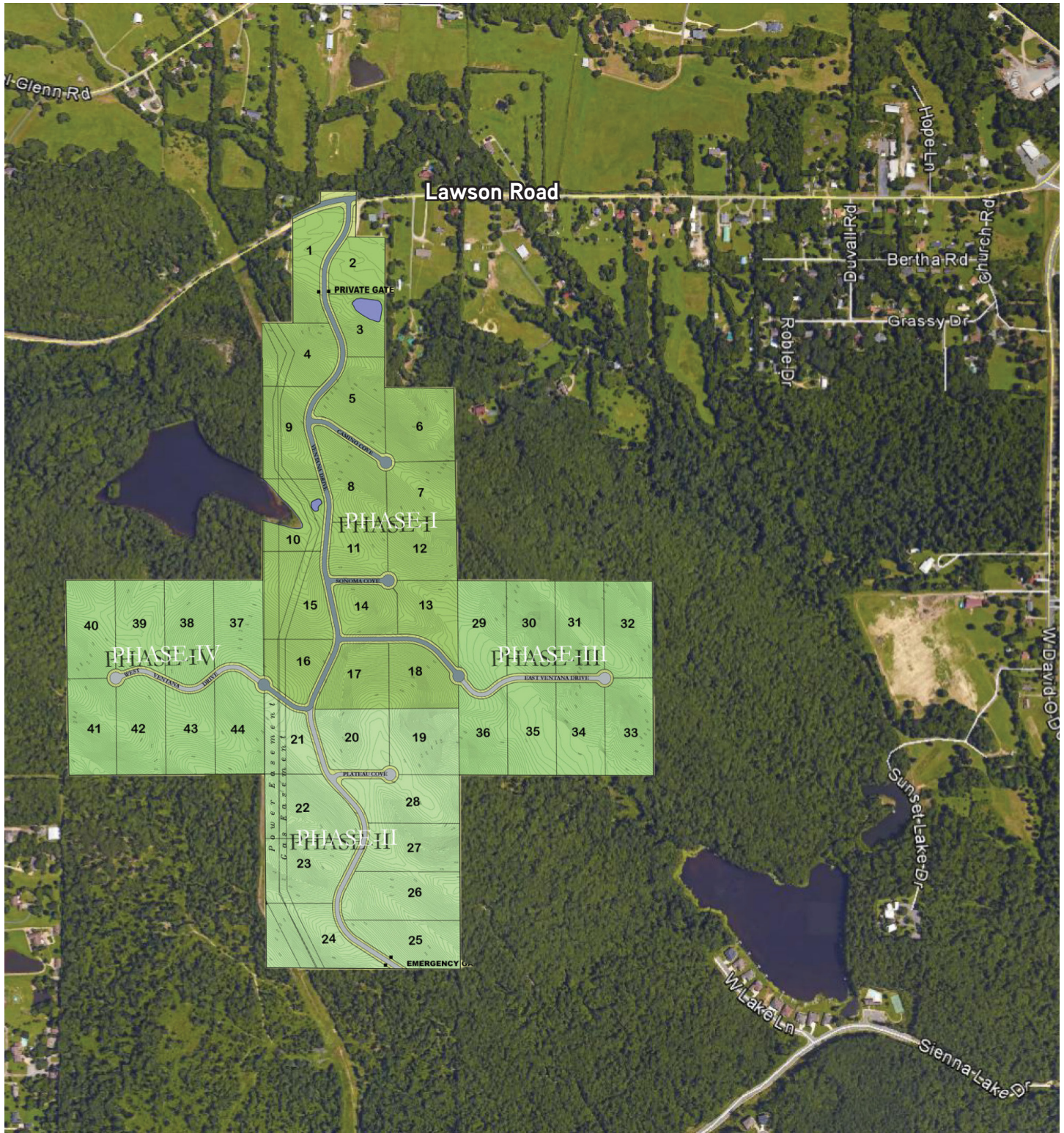
TODD RICE, CCIM
501 372 6161 | EXT. 702
LITTLE ROCK, AR
todd.rice@colliers.com

MASON LEWIS, CCIM
501 372 6161 | EXT. 741
LITTLE ROCK, AR
mason.lewis@colliers.com

This document has been prepared by Colliers International for advertising and general information only. Colliers International makes no guarantees, representations or warranties of any kind, expressed or implied, regarding the information including, but not limited to, warranties of content, accuracy and reliability. Any interested party should undertake their own inquiries as to the accuracy of the information. Colliers International excludes unequivocally all inferred or implied terms, conditions and warranties arising out of this document and excludes all liability for loss and damages arising there from.

COLLIERS INTERNATIONAL
1 Allied Drive, Suite 1500
Little Rock, AR 72202
www.colliers.com/arkansas

Site Survey



***Lots are not platted. FOR ILLUSTRATION PURPOSES ONLY.**