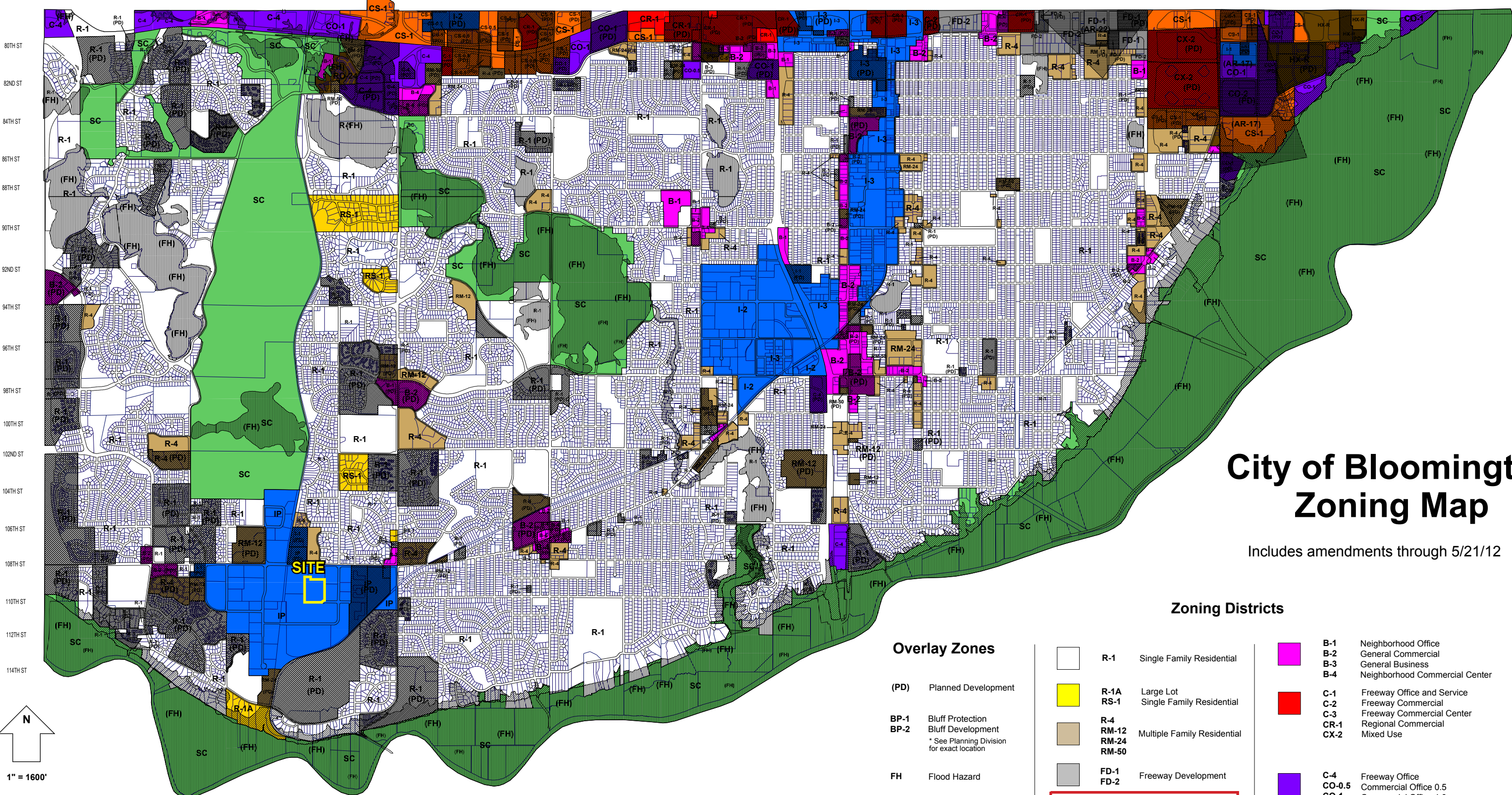
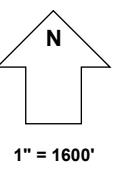


TOWN LINE 8200W  
 ENGLISH AVE 8600W  
 DECAIR AVE 8600W  
 CAVELL AVE 8400W  
 BOONE AVE 8300W  
 AQUILA AVE 8300W  
 ZIRKIN AVE 8200W  
 YUKON AVE 8100W  
 WYOMING AVE 7900W  
 VIRGINIA AVE 7800W  
 UTAH AVE 7700W  
 TEXAS AVE 7600W  
 SUMNER AVE 7500W  
 RHODE ISLAND AVE 7500W  
 QUEBEC AVE 7400W  
 PENNSYLVANIA AVE 7300W  
 OREGON AVE 7200W  
 NEVADA AVE 7100W  
 MARYLAND AVE 7000W  
 LOUISIANA AVE 6900W  
 KENTUCKY AVE 6800W  
 JERSEY AVE 6800W  
 IDAHO AVE 6700W  
 HAMPSHIRE AVE 6600W  
 GEORGIA AVE 6500W  
 FLORIDA AVE 6400W  
 EDGEWOOD AVE 6300W  
 DAKOTA AVE 6250W  
 COLORADO AVE 6200W  
 BRUNSWICK AVE 6100W  
 ALABAMA AVE 6000W  
 NEBRASKA AVE 5900W  
 ZION AVE 5800W  
 YOSEMITE AVE 5700W  
 XAVIER AVE 5600W  
 WAHLEN AVE 5500W  
 VESSEY AVE 5400W  
 NORMANDALE BLVD 5300W  
 UTAH AVE 5260W  
 TOLEDO AVE 5230W  
 STANLEY AVE 5200W  
 RICH AVE 5100W  
 PALMER AVE 5000W  
 PALMER AVE 4900W  
 OGDOROUGH AVE 4800W  
 MORRIS AVE 4700W  
 MORRIS AVE 4600W  
 LITTLE AVE 4500W  
 KELL AVE 4400W  
 JOHNSON AVE 4300W  
 RIVINGTON AVE 4200W  
 HARRISON AVE 4100W  
 GOODRICH AVE 4000W  
 FRANCE AVE 3900W  
 EWING AVE 3800W  
 DEW AVE 3700W  
 CHOLEN AVE 3600W  
 BEARD AVE 3500W  
 ABBOTT AVE 3400W  
 ZENITH AVE 3300W  
 YORK AVE 3200W  
 XERXES AVE 3100W  
 WASHINGTON AVE 3000W  
 VINCENT AVE 2900W  
 UPTON AVE 2800W  
 SHERIDAN AVE 2800W  
 RUSSELL AVE 2500W  
 QUEEN AVE 2400W  
 PENN AVE 2300W  
 OLIVER AVE 2200W  
 NEWTON AVE 2100W  
 MORGAN AVE 2000W  
 LOGAN AVE 1900W  
 KNOX AVE 1800W  
 JAMES AVE 1700W  
 IRVING AVE 1600W  
 HAMBOLDT AVE 1500W  
 GRAND AVE 1400W  
 FREMONT AVE 1300W  
 BERG AVE 1200W  
 UPTON AVE 1100W  
 COLFAX AVE 1000W  
 BRYANT AVE 800W  
 ALDRICH AVE 800W  
 LYNDALE AVE 700W  
 GARFIELD AVE 600W  
 HARRIET AVE 500W  
 GRAND AVE 400W  
 PLEASANT AVE 300W  
 PILLSBURY AVE 200W  
 WENTWORTH AVE 150W  
 BLAISELLE AVE 100W  
 NICOLLET AVE 0  
 1ST AVE 10E  
 STEVENS AVE 15E  
 2ND AVE 20E  
 3RD AVE 30E  
 4TH AVE 40E  
 5TH AVE 50E  
 PORTLAND AVE 60E  
 OAKLAND AVE 60E  
 PARK AVE 70E  
 COLUMBUS AVE 75E  
 CHICAGO AVE 80E  
 ELLIOT AVE 90E  
 10TH AVE 100E  
 11TH AVE 110E  
 12TH AVE 120E  
 13TH AVE 130E  
 14TH AVE 140E  
 15TH AVE 150E  
 BLOOMINGTON AVE 150E  
 16TH AVE 160E  
 17TH AVE 170E  
 18TH AVE 180E  
 CEDAR AVE 1830E  
 LONGFELLOW AVE 1880E  
 19TH AVE 1900E  
 20TH AVE 2000E  
 21ST AVE 2100E  
 22ND AVE 2200E  
 STANDISH AVE 2250E  
 23RD AVE 2300E  
 24TH AVE 2400E  
 25TH AVE 2500E  
 26TH AVE 2600E  
 27TH AVE 2700E  
 28TH AVE 2800E  
 29TH AVE 2900E  
 30TH AVE 3000E  
 WISCONSIN AVE 3030E  
 31ST AVE 3100E  
 32ND AVE 3200E  
 33RD AVE 3300E  
 34TH AVE 3400E  
 35TH AVE 3500E  
 36TH AVE 3600E  
 37TH AVE 3700E  
 38TH AVE 3800E  
 39TH AVE 3900E  
 40TH AVE 4000E  
 41ST AVE 4100E  
 42ND AVE 4200E  
 43RD AVE 4300E  
 44TH AVE 4400E  
 45TH AVE 4500E  
 46TH AVE 4600E  
 47TH AVE 4700E  
 48TH AVE 4800E  
 49TH AVE 4900E  
 50TH AVE 5000E  
 51ST AVE 5100E  
 52ND AVE 5200E



# City of Bloomington Zoning Map

Includes amendments through 5/21/12



1" = 1600'

Community Development Department  
 Planning Division  
 PH: 952-563-8920 FAX: 952-563-8949  
 TTY: 952-563-8740  
 Email: [planning@ci.bloomington.mn.us](mailto:planning@ci.bloomington.mn.us)  
<http://www.ci.bloomington.mn.us>

Date printed: 6-21-11  
 Zoning changes made after this date are not reflected on this map.  
 Map maintained by the Bloomington Planning Division

General Disclaimer: While the creators of this map strived for accuracy, the City cannot guarantee the accuracy of this map. Please contact the Bloomington Planning Division for official zoning determination.

### Overlay Zones

- (PD) Planned Development
- BP-1 Bluff Protection
- BP-2 Bluff Development  
\* See Planning Division for exact location
- FH Flood Hazard
- AR-17 Airport Runway
- AR-22 Overlay Districts

- R-1 Single Family Residential
- R-1A Large Lot
- RS-1 Single Family Residential
- R-4 Multiple Family Residential
- RM-12 Multiple Family Residential
- RM-24 Multiple Family Residential
- RM-50 Multiple Family Residential
- FD-1 Freeway Development
- FD-2 Freeway Development
- IP Industrial Park (IP & I-1)
- I-1 Limited Industrial (I-2)
- I-2 General Industrial (I-3)
- I-3 General Industrial (I-3)
- SC Conservation

### Zoning Districts

- B-1 Neighborhood Office
- B-2 General Commercial
- B-3 General Business
- B-4 Neighborhood Commercial Center
- C-1 Freeway Office and Service
- C-2 Freeway Commercial
- C-3 Freeway Commercial Center
- CR-1 Regional Commercial
- CX-2 Mixed Use
- C-4 Freeway Office
- CO-0.5 Commercial Office 0.5
- CO-1 Commercial Office 1.0
- CO-2 Commercial Office Mixed Use
- CS-0.5 Commercial Service 0.5
- CS-1 Commercial Service 1.0
- C-5 Freeway Mixed Use
- HX-R High Intensity Mixed Use with Residential
- RO-24 Residential Office 24
- RO-50 Residential Office 50