

# FOR SUBLEASE FULLY FURNISHED OFFICE SPACE

11301 W Lake Park Drive  
Milwaukee, WI



Colliers International  
833 E Michigan Street | Suite 500  
Milwaukee, WI 53202  
P: +1 414 276 9500

JOSEPH F. LAK JR.  
414 278 6824 (direct)  
414 721 8490 (mobile)  
joe.lak@colliers.com

ANDY COLLINS  
414 278 6862 (direct)  
262 719 5068 (mobile)  
andy.collins@colliers.com

## LOCATION



## BUILDING SPECIFICATIONS

Available Office Space:	Total Available -40,020 SF
Building Size:	40,020 SF
Stories:	1
Year Built:	1999
Parking:	8.00/1,000 SF

# Sublease Rate: \$14.00

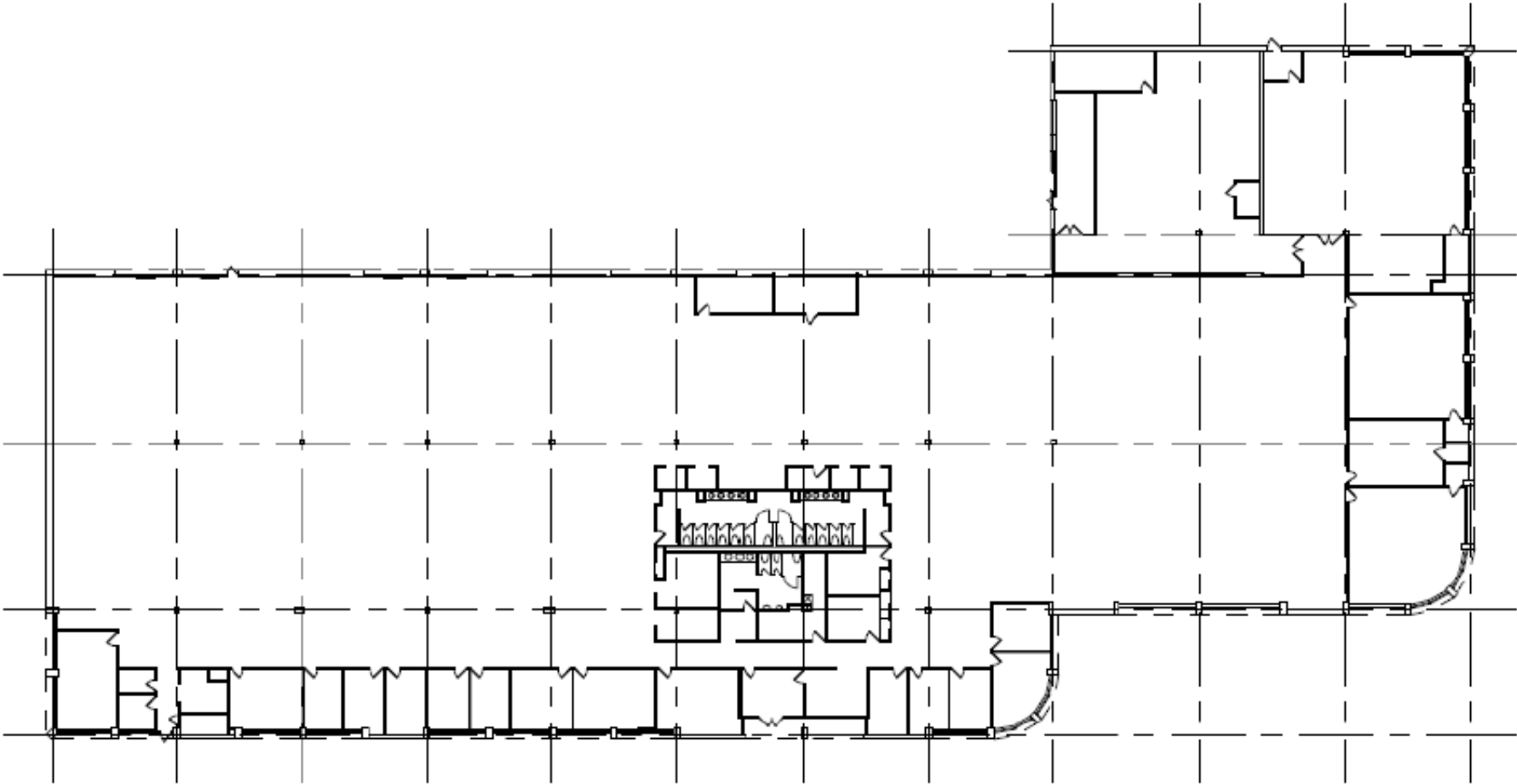
PSF GROSS

SUBLEASE WILL RUN THROUGH 02/02/2022

## PROPERTY HIGHLIGHTS

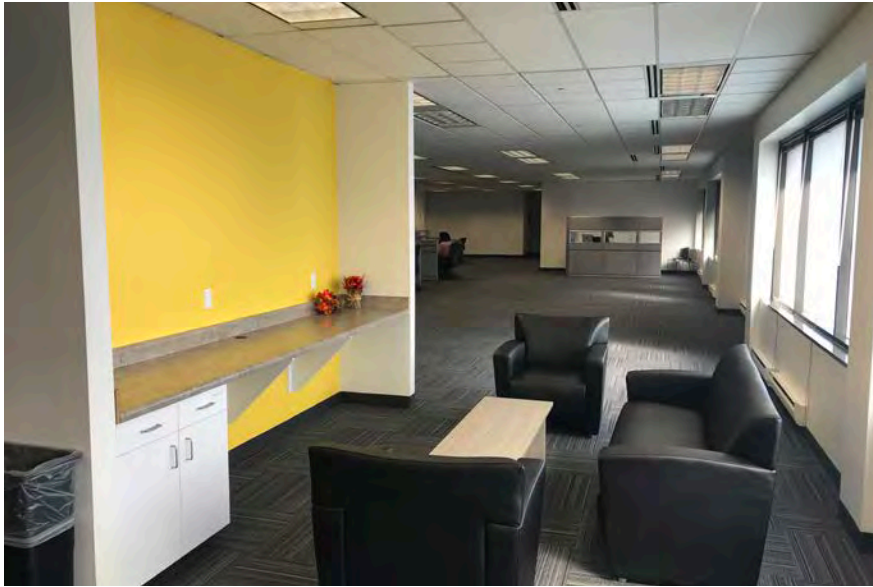
- Single-story office with an abundance of glass line
- Quality surrounding retail and hospitality amenities
- Fitness center available within the park for the exclusive use of Somerset tenants
- Well located along Highway 45 with quick access to downtown
- Milwaukee as well as west and northern suburbs
- First class property management and on-site maintenance

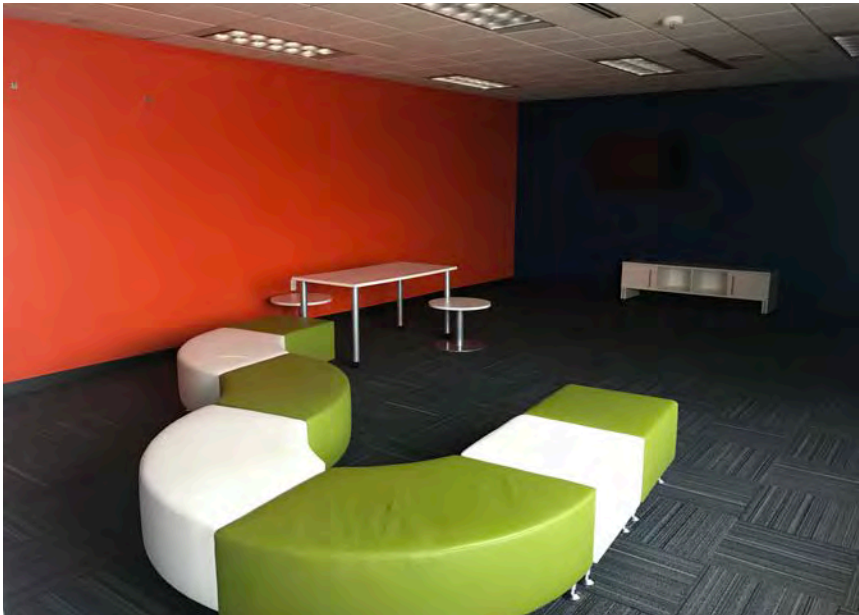
FLOOR PLAN - ENTIRE BUILDING - 40,020 RSF





## PHOTOGRAPHS









JOSEPH F. LAK JR.  
414 278 6824 (direct)  
414 721 8490 (mobile)  
joe.lak@colliers.com

ANDY COLLINS  
414 278 6862 (direct)  
262 719 5068 (mobile)  
andy.collins@colliers.com

This document has been prepared by Colliers International for advertising and general information only. Colliers International makes no guarantees, representations or warranties of any kind, expressed or implied, regarding the information including, but not limited to, warranties of content, accuracy and reliability. Any interested party should undertake their own inquiries as to the accuracy of the information. Colliers International excludes unequivocally all inferred or implied terms, conditions and warranties arising out of this document and excludes all liability for loss and damages arising there from. This publication is the copyrighted property of Colliers International and/or its licensor(s). ©2017. All rights reserved.

Colliers International  
833 E Michigan Street | Suite 500  
Milwaukee, WI 53202  
P: +1 414 276 9500

