

FOR SALE > COMMERCIAL ZONED LAND

4450-
4470

S WHITE
MOUNTAIN
ROAD

SHOW LOW, AZ 85901

Asking Price \$2,140,000

\$217,723/acre • \$5/SF

Location

The eastern frontage of the property is located on South White Mountain Road. The southern boundary is across from the entrance to the Vacation Village Arena, which is south of the Park Pineway shopping center. The northernmost boundary is just north of the Park Pineway Road, with the western boundary fronting Cub Lake Road.

Area

- ±9.83 gross AC (±428,195 SF)*
- Parcel numbers: 212-03-108 C, D, E & F; 212-03-117A; 212-04-125A; 212-04-134A; 212-04-135C; 212-04-186**

*Per Survey on file

**According to the Navajo County website

Features

- Frontage on Highway 260
- Excellent visibility
- Located across from Park Pineway Plaza
- Major commercial development area
- Zoning: C-2*** - General Commercial, City of Show Low

*** According to City of Show Low website



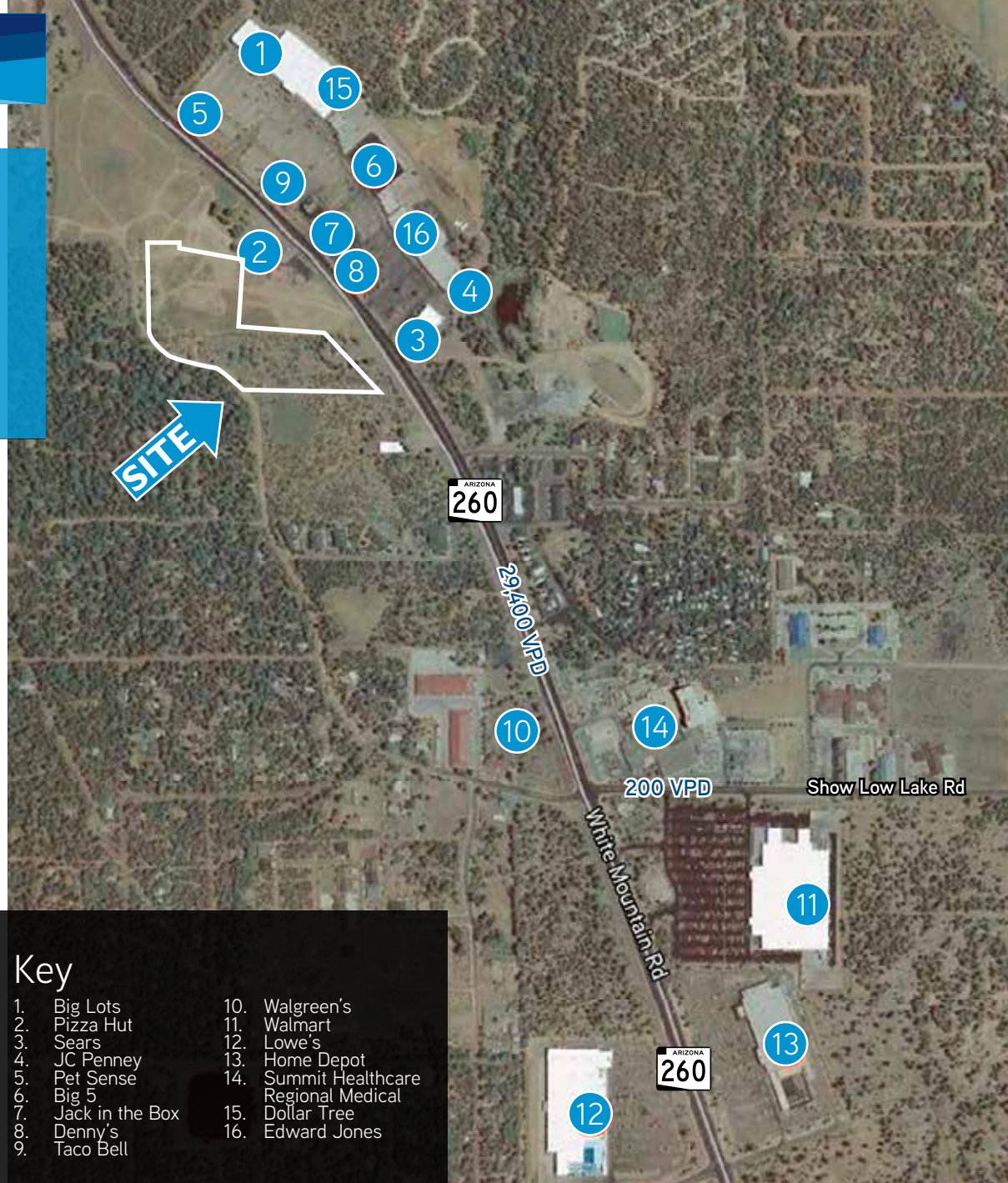
Key

- | | |
|--------------------|-----------------------|
| 1. Big Lots | 10. Walgreen's |
| 2. Pizza Hut | 11. Walmart |
| 3. Sears | 12. Lowe's |
| 4. JC Penney | 13. Home Depot |
| 5. Pet Sense | 14. Summit Healthcare |
| 6. Big 5 | 15. Regional Medical |
| 7. Jack in the Box | 16. Dollar Tree |
| 8. Denny's | |
| 9. Taco Bell | |

KIM SOULÉ
+1 602 222 5047
kim.soule@colliers.com

MIKE MONTOYA
+1 602 222 5157
mike.montoya@colliers.com

COLLIERS INTERNATIONAL
2390 E. Camelback Rd, Suite 100
Phoenix, AZ 85016
www.colliers.com/greaterphoenix

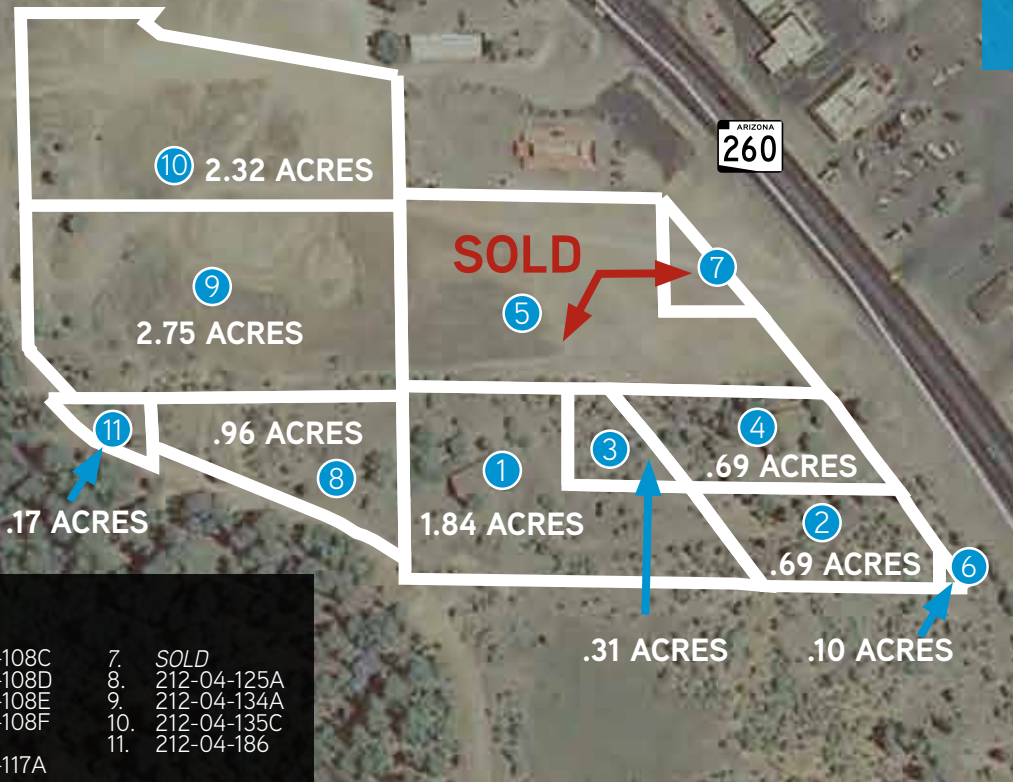


FOR SALE COMMERCIALLY ZONED LAND

4450- 4470

S WHITE
MOUNTAIN
ROAD

SHOW LOW, AZ 85901



Key

- | | |
|----------------|-----------------|
| 1. 212-03-108C | 7. SOLD |
| 2. 212-03-108D | 8. 212-04-125A |
| 3. 212-03-108E | 9. 212-04-134A |
| 4. 212-03-108F | 10. 212-04-135C |
| 5. SOLD | 11. 212-04-186 |
| 6. 212-03-117A | |

Demographics

	1 mi Radius	3 mi Radius	5 mi Radius
Population Trend			
2000 Total Population	1,316	4,187	13,294
2010 Total Population	1,772	5,412	16,871
2012 Total Population	1,846	5,559	17,157
2017 Total Population	1,961	5,813	17,741
Population Change Trend			
2000 to 2010 Population Change	34.7%	29.3%	26.9%
2000 to 2012 Population Change	40.3%	32.8%	29.1%
2010 to 2017 Population Change	10.7%	7.4%	5.2%
2012 to 2017 Population Change	6.2%	4.6%	3.4%

KIM SOULÉ
+1 602 222 5047
kim.soule@colliers.com

MIKE MONTOYA
+1 602 222 5157
mike.montoya@colliers.com

COLLIERS INTERNATIONAL
2390 E. Camelback Rd, Suite 100
Phoenix, AZ 85016
www.colliers.com/greaterphoenix



This document/email has been prepared by Colliers International for advertising and general information only. Colliers International makes no guarantees, representations or warranties of any kind, expressed or implied, regarding the information including, but not limited to, warranties of content, accuracy and reliability. Any interested party should undertake their own inquiries as to the accuracy of the information. Colliers International excludes unequivocally all inferred or implied terms, conditions and warranties arising out of this document and excludes all liability for loss and damages arising there from. This publication is the copyrighted property of Colliers International and/or its licensor(s).

© 2018. All rights reserved.