

FOR LEASE > RETAIL

# Thorn Run Crossing



1136 THORN RUN ROAD | MOON TOWNSHIP, PA 15108

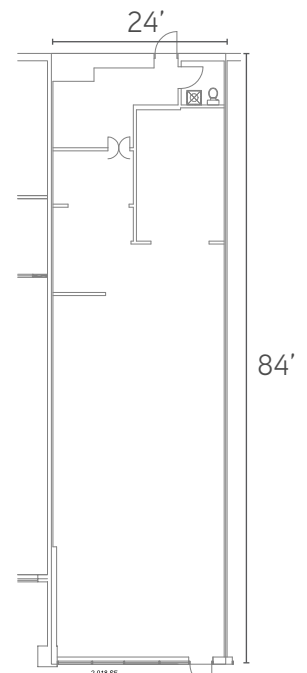


## Property Information

- > **2,018 SF available**
- > 2nd generation retail space
- > High ceilings
- > Excellent demographics and visibility
- > At the intersection of Thorn Run Road and Beaver Grade Road
- > Abundant Parking

## Demographics

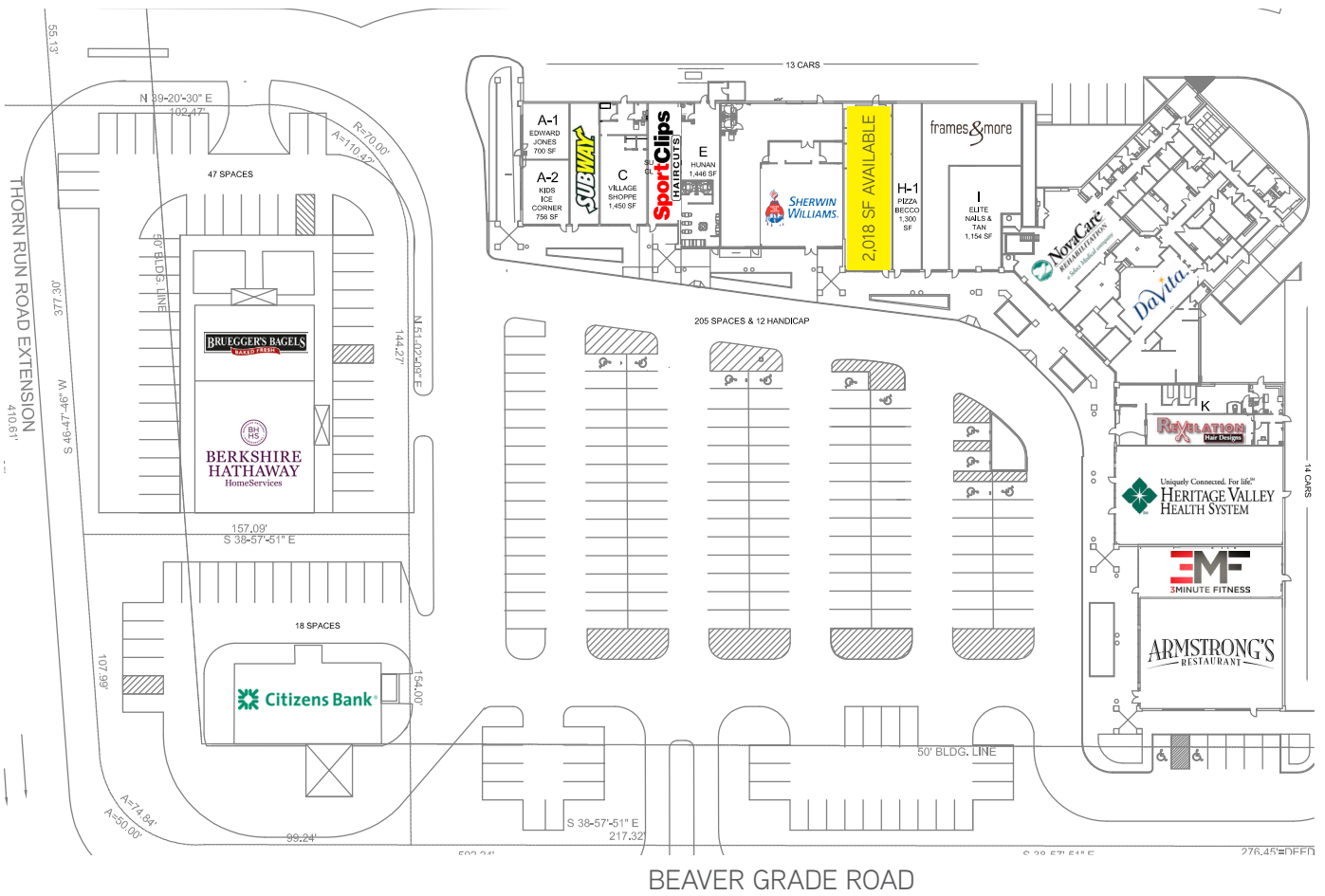
	<u>3 Miles</u>	<u>5 Miles</u>	<u>7 Miles</u>
Population	30,426	66,423	111,679
Number of Households	13,136	28,556	48,301
Average Household Income	\$82,668	\$88,379	\$85,025
Daytime Population	28,310	56,684	89,647



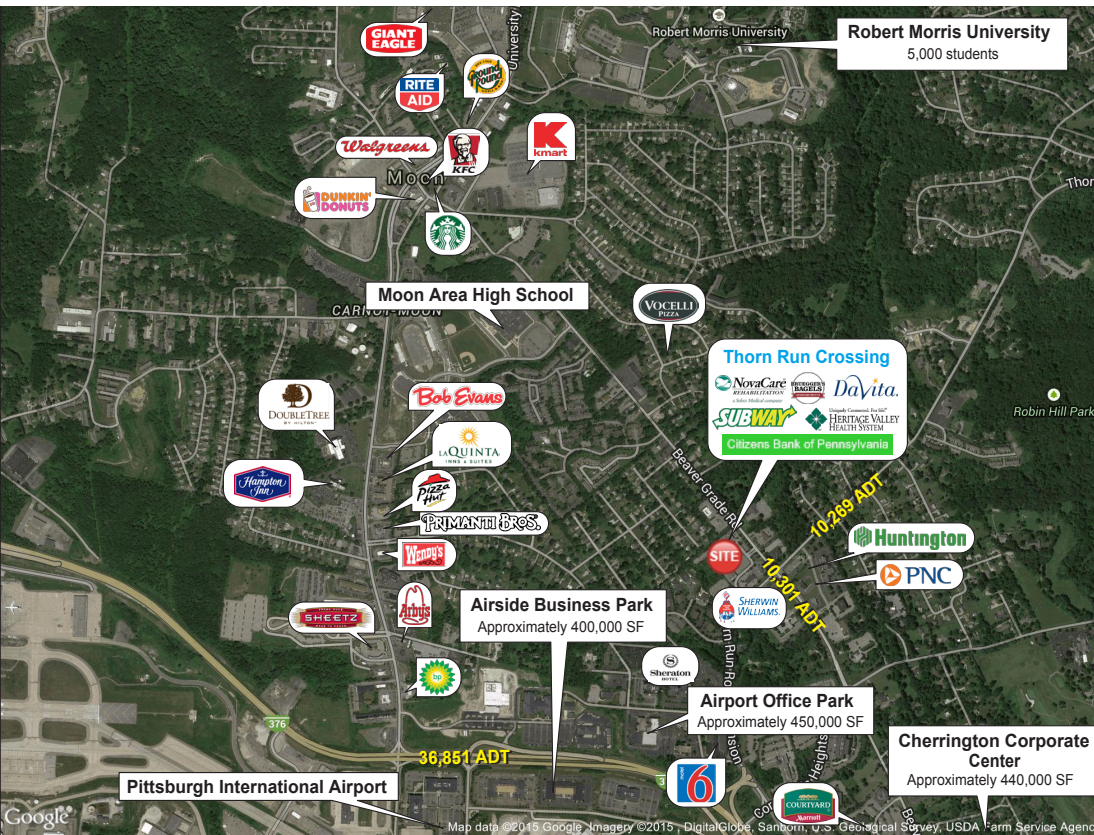
MICHELLE STEWART  
VICE PRESIDENT | PITTSBURGH  
RETAIL BROKERAGE  
412 321 4200 | EXT. 227  
michelle.stewart@colliers.com

MARK E. ANDERSON  
VICE PRESIDENT | PITTSBURGH  
RETAIL BROKERAGE  
412 321 4200 | EXT. 222  
MarkE.Anderson@colliers.com

COLLIERS INTERNATIONAL | PITTSBURGH  
Two Gateway Center  
603 Stanwix Street, Suite 125  
Pittsburgh, PA 15222  
www.colliers.com



BEAVER GRADE ROAD



## Contact Us

MICHELLE STEWART  
 VICE PRESIDENT | PITTSBURGH  
 RETAIL BROEKRAGE  
 412 321 4200 | EXT. 227  
[michelle.stewart@colliers.com](mailto:michelle.stewart@colliers.com)

MARK E. ANDERSON  
 VICE PRESIDENT | PITTSBURGH  
 RETAIL BROKERAGE  
 412 321 4200 | EXT. 222  
[MarkE.Anderson@colliers.com](mailto:MarkE.Anderson@colliers.com)

COLLIERS INTERNATIONAL | PITTSBURGH  
 Two Gateway Center, Suite 125  
 603 Stanwix Street  
 Pittsburgh, PA 15222  
[www.colliers.com](http://www.colliers.com)

The information contained herein has been given to us by the owner of the property or other sources we deem reliable. We have no reason to doubt its accuracy, but we do not guarantee it. All information should be verified prior to purchase or lease.

