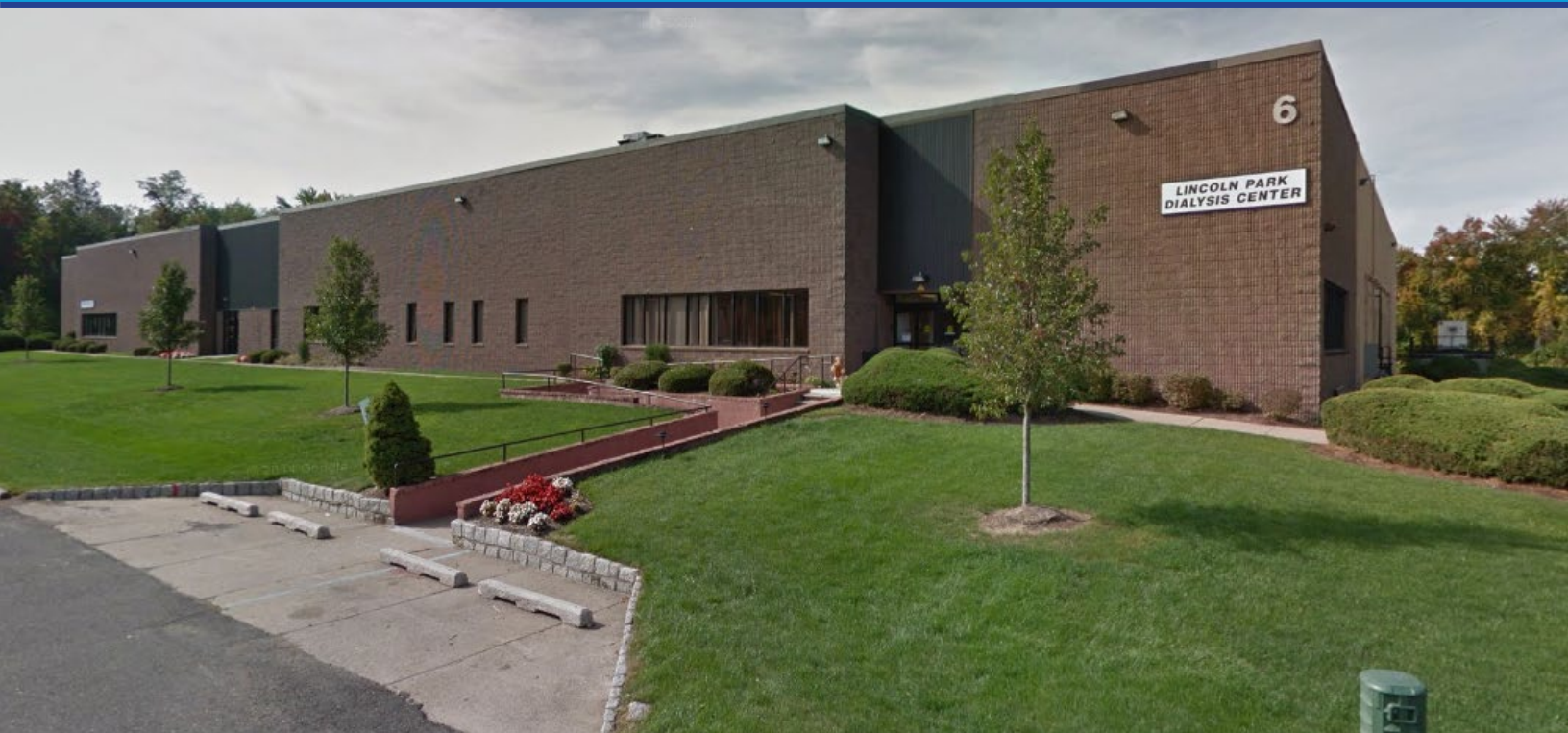


6B FRASSETTO WAY, LINCOLN PARK, NJ



Available Space

- 9,573 SF sublease space
- 1,000 SF of office space
- Sublease expiration date: July 31, 2024
- Available immediately
- Rental Rate: Negotiable

Property Highlights

- 22' clear height
- 1 dock door and 1 drive in
- Private offices
- Break room
- Conference room
- 13 car parking spaces

No representation is made as to the accuracy of the information furnished herein and same is submitted subject to errors, omissions, change of prices, rental, or other conditions, prior sale, lease, sublease, and/or withdrawal without notice. While every attempt is made to ensure accuracy, the floor plan(s) is for guidance only. The measurements, dimensions, specifications, and other data shown are approximate and may not be to scale. We assume no responsibility for the accuracy of the floor plan(s) or for any action taken in reliance thereon. The floor plan(s) do not create any representation, warranty or contract. All parties should consult a professional, such as an architect, to verify the information contained herein. The furnishing of this information shall not be deemed a hiring. A commission in accordance with our principal's schedule of rates and conditions will be paid to the procuring Broker who executes our or our principal's brokerage agreement, subject to a fully consummated transaction upon terms and conditions acceptable to our principal.

Contact Us:

NOAH R. BALANOFF, CCIM
Vice Chair
Dir +1 973 299 3023
Cell +1 917 757 5148
noah.balanoff@colliers.com

JACQUELYN SEVERINO
Associate Vice President
Dir +1 973 299 3081
Cell +1 973 986 8904
jacquelyn.severino@colliers.com

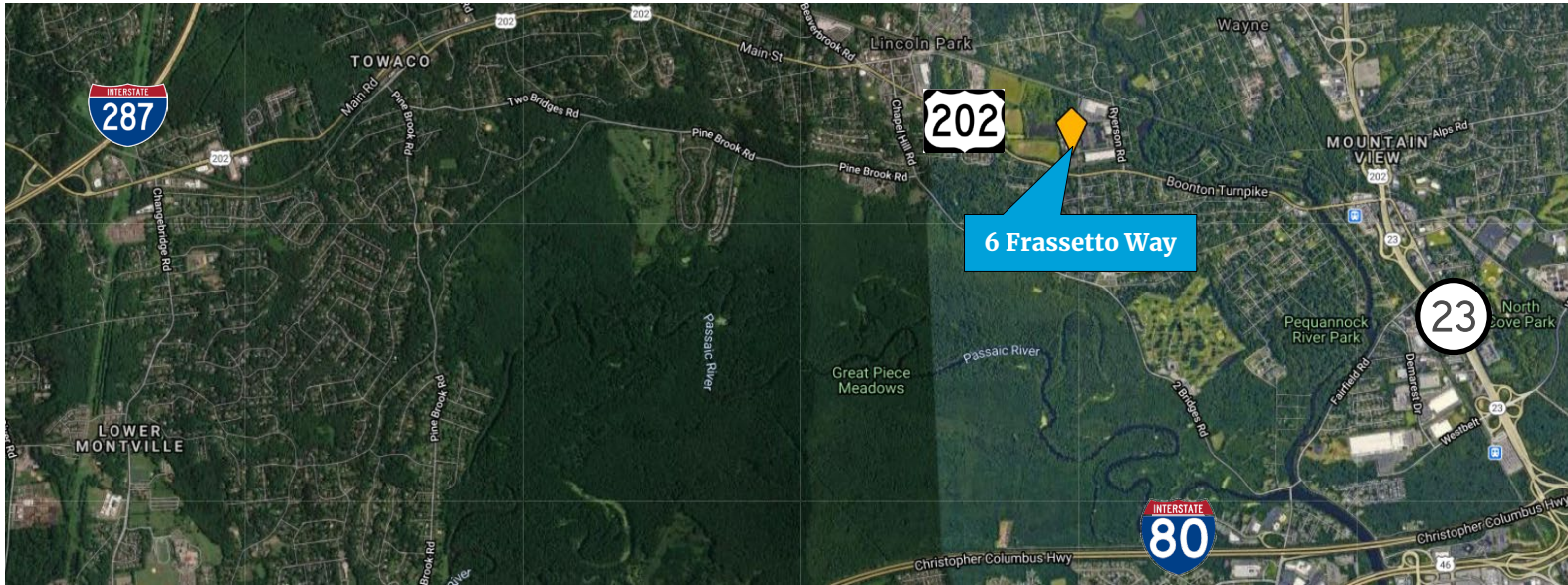
MARK HAY
Vice President
Dir +1 973 299 3002
Cell +1 908 246 1815
mark.hay@colliers.com

COLLIERS INTERNATIONAL NJ LLC
20 Waterview Boulevard
Suite 310
Parsippany, NJ 07054

www.colliers.com

6B FRASSETTO WAY, LINCOLN PARK, NJ

Aerial Views



Mileage			
I-287 North	5.1 miles	I-287 South	5.1 miles
I-80 East	3.9 miles	I-80 West	4.3 miles
Route 23 North	2 miles	Route 23 South	2 miles
Route 202 North	.3 miles	Route 202 South	.3 miles

SUBLEASE – WAREHOUSE SPACE

Colliers

6B FRASSETTO WAY, LINCOLN PARK, NJ

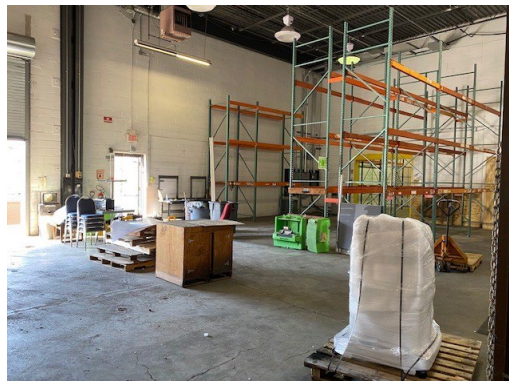
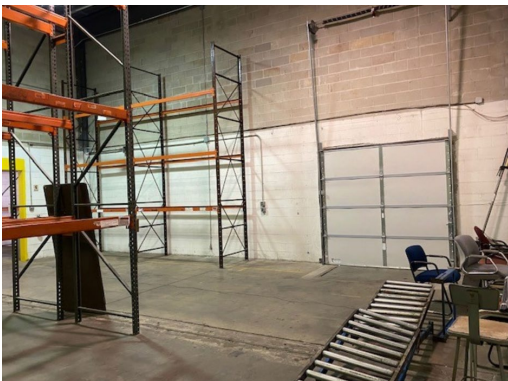
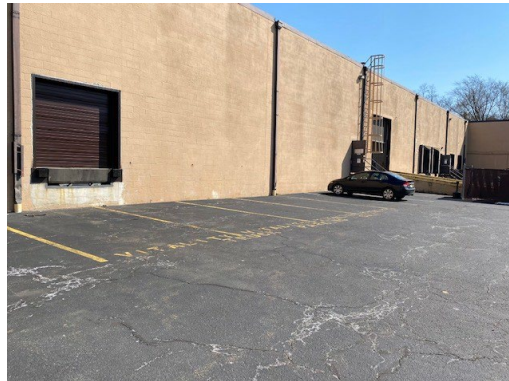


Contact Us:

NOAH R. BALANOFF, CCIM
Vice Chair
Dir +1 973 299 3023
Cell +1 917 757 5148
noah.balanoff@colliers.com

JACQUELYN SEVERINO
Associate Vice President
Dir +1 973 299 3081
Cell +1 973 986 8904
jacquelyn.severino@colliers.com

MARK HAY
Vice President
Dir +1 973 299 3002
Cell +1 908 246 1815
mark.hay@colliers.com



COLLIERS INTERNATIONAL NJ LLC
20 Waterview Boulevard
Suite 310
Parsippany, NJ 07054

www.colliers.com