

FOR SUBLEASE

2200 Paseo Verde

Located within The District at Green Valley Ranch



THE DISTRICTSM
at green valley ranch

FOR MORE INFORMATION:
ANDREW KILDUFF
+1 702 836 3718
andrew.kilduff@colliers.com

FOR SUBLEASE

2200 Paseo Verde

Property Overview

2200 Paseo Verde is an extremely rare office building in the Valley with a tremendous amount of upside. The building boasts superior access, grand aesthetics, seamless functionality and unparalleled amenities all in a beautiful setting.

Suite 150 is located directly off of the lobby adorned with high end finishes. The space is impressive and the layout is ideal for any professional office user. The building is situated immediately off of the 215 Beltway, providing direct access for clients and employees. 2200 Paseo Verde is located within "The District at Green Valley Ranch" (one of the premier mixed use lifestyle centers in Las Vegas).

Location Overview

The District at Green Valley Ranch provides a vibrant and diverse mix of shopping, dining, entertainment, residences and office space- all in an urban environment with a pedestrian friendly main street plaza and a beautiful central park. The project is located on South Green Valley Parkway and Interstate 215.

- Suite #150 – ±5,945 RSF
- Parking – 15 Total Spaces (3 reserved & covered)
- Located within minutes from McCarran International Airport and the Las Vegas Strip



ANDREW KILDUFF
+1 702 836 3718
andrew.kilduff@colliers.com

3960 Howard Hughes Parkway, Suite 150
Las Vegas, NV 89169
T +1 702 735 5700
www.colliers.com/lasvegas



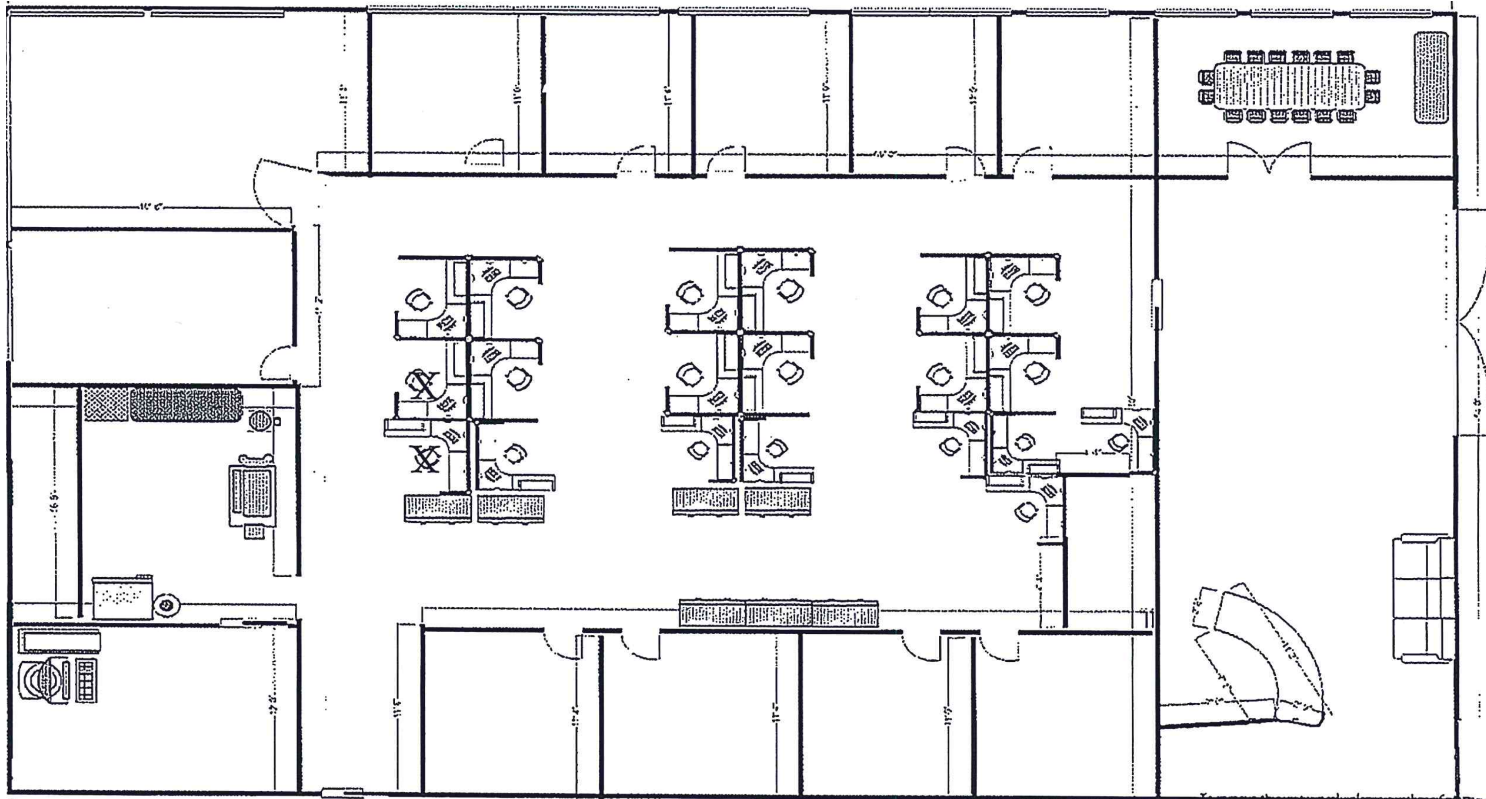


FOR SUBLEASE

2200 Paseo Verde

SUITE 150

±5,945 RSF



ANDREW KILDUFF

+1 702 836 3718

andrew.kilduff@colliers.com

3960 Howard Hughes Parkway, Suite 150

Las Vegas, NV 89169

T +1 702 735 5700

www.colliers.com/lasvegas