

FOR LEASE > 2,000± SF - 4,800± SF AVAILABLE

Downtown Livermore, CA

Second Street Plaza

1959 & 1971 SECOND STREET, LIVERMORE, CA

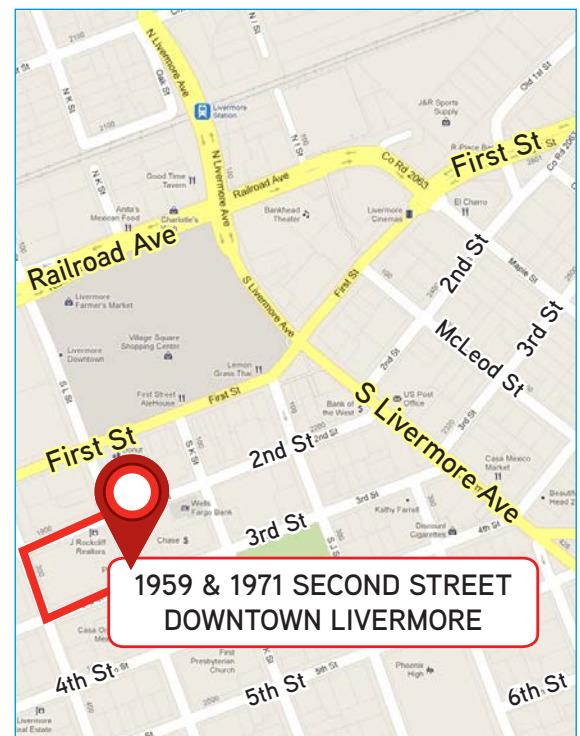


Project Highlights

- > Centrally located retail center in the heart of bustling Downtown Livermore with retail signage and frontage
- > 2,800± SF and 2,000± SF (can be combined) in-line with two entrances, one on Second Street & one on Third Street with access through parking lot
- > Flexible zoning for office and retail users
- > Adjacent to nearby specialty shops, restaurants and more
- > Dedicated parking lot with over 50 stalls as well as ample on-street parking
- > Current tenants include Arthur Murray Dance Studio, I-Gate, Sweetheart Bridal, Bikram Yoga/Café & Berkshire-Hathaway
- > Low NNN's (\$0.40)

Demographics

	1 Mile	3 Mile	5 Mile
Population (2018)	23,156	81,707	109,188
Daytime Pop (2018)	12,967	33,267	58,271
Avg. HH Income (2018)	\$129,239	\$158,239	\$169,163



ROBIN NEWTON
+1 925 227 6240
robin.newton@colliers.com
CA License No. 01298897

MARK TRISKA, SIOR
+1 925 227 6210
mark.triska@colliers.com
CA License No. 01012779

COLLIERS INTERNATIONAL
3825 Hopyard Road, Suite 195
Pleasanton, CA 94588
www.colliers.com

FOR LEASE > 2,000± SF - 4,800± SF AVAILABLE

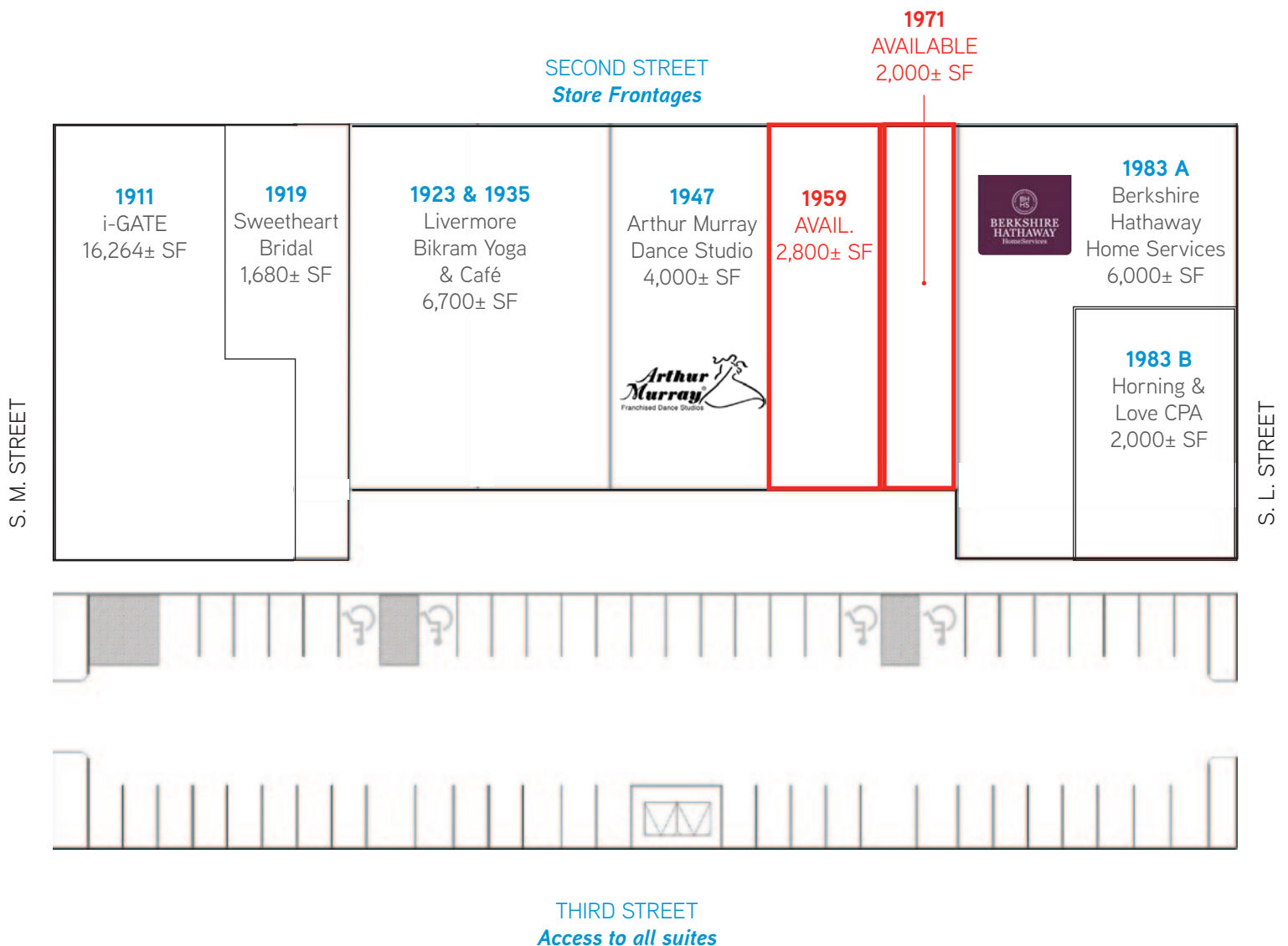
Downtown Livermore, CA

Second Street Plaza



1959 & 1971 SECOND STREET, LIVERMORE, CA

Site Plan



ROBIN NEWTON
+1 925 227 6240
robin.newton@colliers.com
CA License No. 01298897

MARK TRISKA, SIOR
+1 925 227 6210
mark.triska@colliers.com
CA License No. 01012779

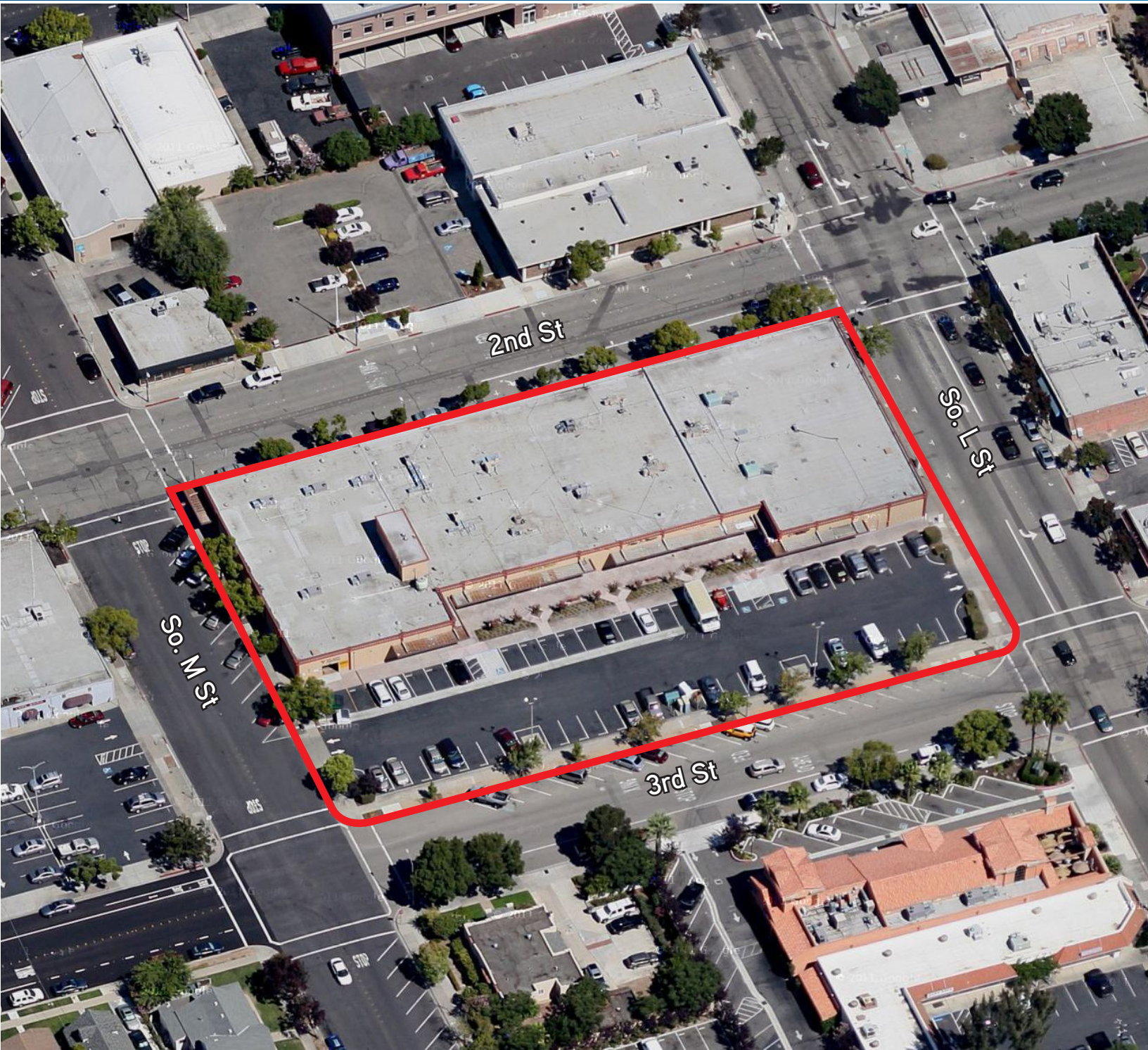
COLLIERS INTERNATIONAL
3825 Hopyard Road, Suite 195
Pleasanton, CA 94588
www.colliers.com

FOR LEASE > 2,000± SF - 4,800± SF AVAILABLE

Downtown Livermore, CA

Second Street Plaza

1959 & 1971 SECOND STREET, LIVERMORE, CA



ROBIN NEWTON
+1 925 227 6240
robin.newton@colliers.com
CA License No. 01298897

MARK TRISKA, SIOR
+1 925 227 6210
mark.triska@colliers.com
CA License No. 01012779

COLLIERS INTERNATIONAL
3825 Hopyard Road, Suite 195
Pleasanton, CA 94588
www.colliers.com