

RETAIL SPACE > FOR LEASE

888 NEW HAMPSHIRE STREET

SUITE B, LAWRENCE, KANSAS



PROPERTY HIGHLIGHTS

Anchored by a 114-unit apartment complex and a bank, this multi-use property is located on E. 9th and New Hampshire Streets in Lawrence's vibrant downtown area near shopping, dining and city parking. The property has metered parking stalls at front entrance, 10-hour paid lot to the north and a 2-hour free lot across the street.

- > Building Size: 145,200 SF
- > Available Space: 1,785 SF
- > Year Built: 2016
- > Zoning: CD
- > Lease Rate: \$22/SF NNN (est. \$7.65/SF)
- > Total Monthly Rate: \$4,910.43



ALLISON VANCE MOORE Sior
+1 785 865 3924
LAWRENCE, KS
allison.moore@colliers.com



RETAIL SPACE > FOR LEASE

888 NEW HAMPSHIRE STREET

SUITE B, LAWRENCE, KANSAS

PICTURES



ALLISON VANCE MOORE SIOR
+1 785 865 3924
LAWRENCE, KS
allison.moore@colliers.com

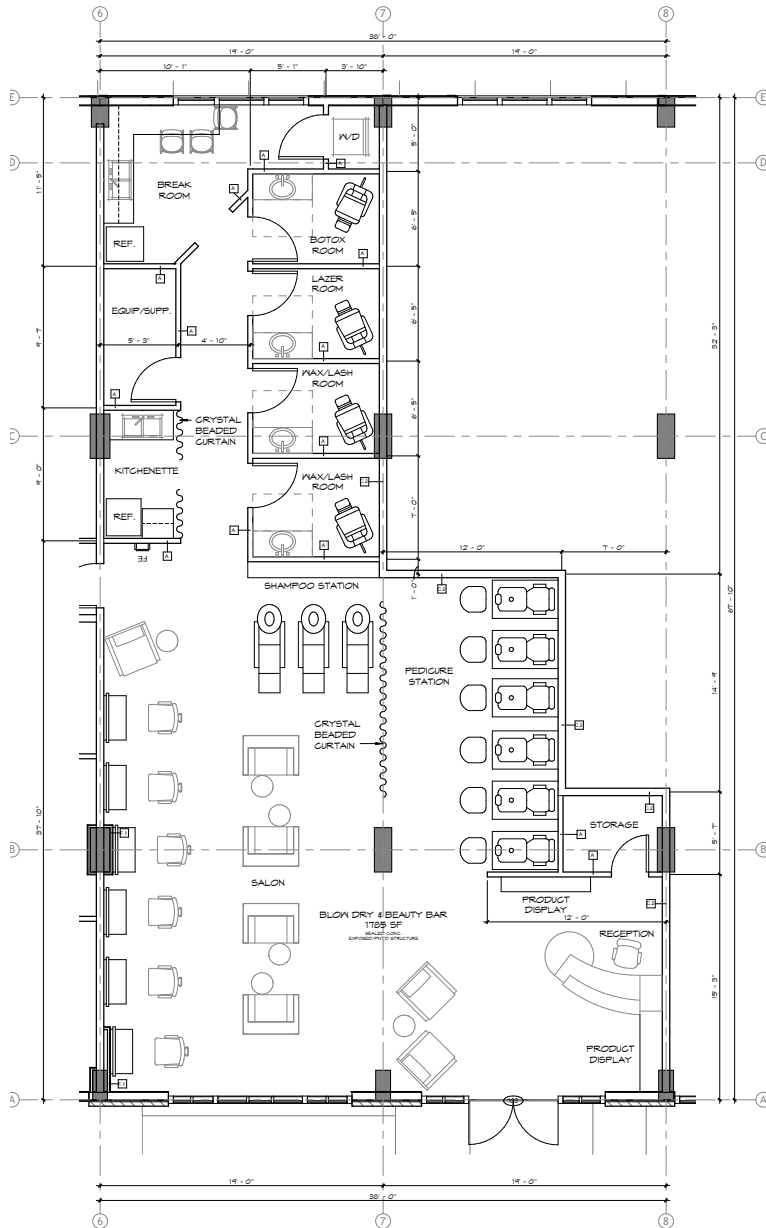


RETAIL SPACE > FOR LEASE

888 NEW HAMPSHIRE STREET

SUITE B, LAWRENCE, KANSAS

FLOOR PLAN



ALLISON VANCE MOORE Sior
+1 785 865 3924
LAWRENCE, KS
allison.moore@colliers.com

COLLIERS INTERNATIONAL
3705 Clinton Parkway, Suite 201
Lawrence, Kansas 66047
www.colliers.com

This document has been prepared by Colliers International for advertising and general information only. Colliers International makes no guarantees, representations or warranties of any kind, expressed or implied, regarding the information including, but not limited to, warranties of content, accuracy and reliability. Any interested party should undertake their own inquiries as to the accuracy of the information. Colliers International excludes unequivocally all inferred or implied terms, conditions and warranties arising out of this document and excludes all liability for loss and damages arising there from. This publication is the copyrighted property of Colliers International and/or its licensor(s). ©2020. All rights reserved.

