

FOR SALE > RETAIL

2.9± AC FOR SALE

5590 WICKHAM ROAD, MELBOURNE, FL 32940

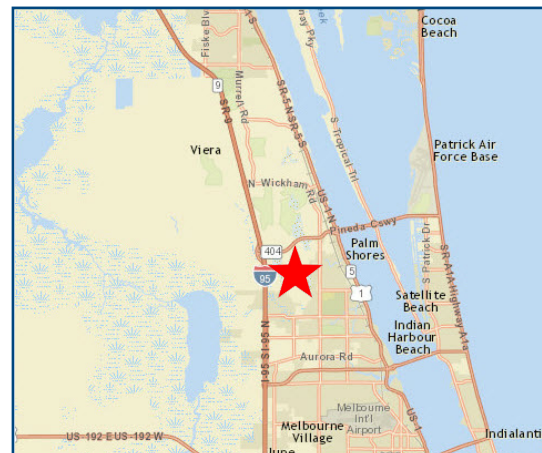


Property Features

- > Land available: 2.9± AC > 2.7± AC developable
- > Located on the SWC Pineda Causeway and Wickham Road
- > Soft corner with full access and median cut, and cross access with CVS
- > Zoning: CP
- > Surrounded by retailers such as CVS, 7-Eleven, Advanced Auto Parts, Home Depot, Publix, Stein Mart, Pinch A Penny and more
- > Area caters to Viera, a high-end, master planned community
- > Connects from I-95 to A1A, giving access to and from Satellite Beach, Patrick Air Force Base, Kennedy Space Center, and Merritt Island.
- > Traffic Counts: 38,000 AADT on Wickham Rd.
20,200 AADT on Pineda Cswy.

Pineda Causeway is now connected to I-95, one of the only three access points from I-95 to the beach!

Location Map



Demographics

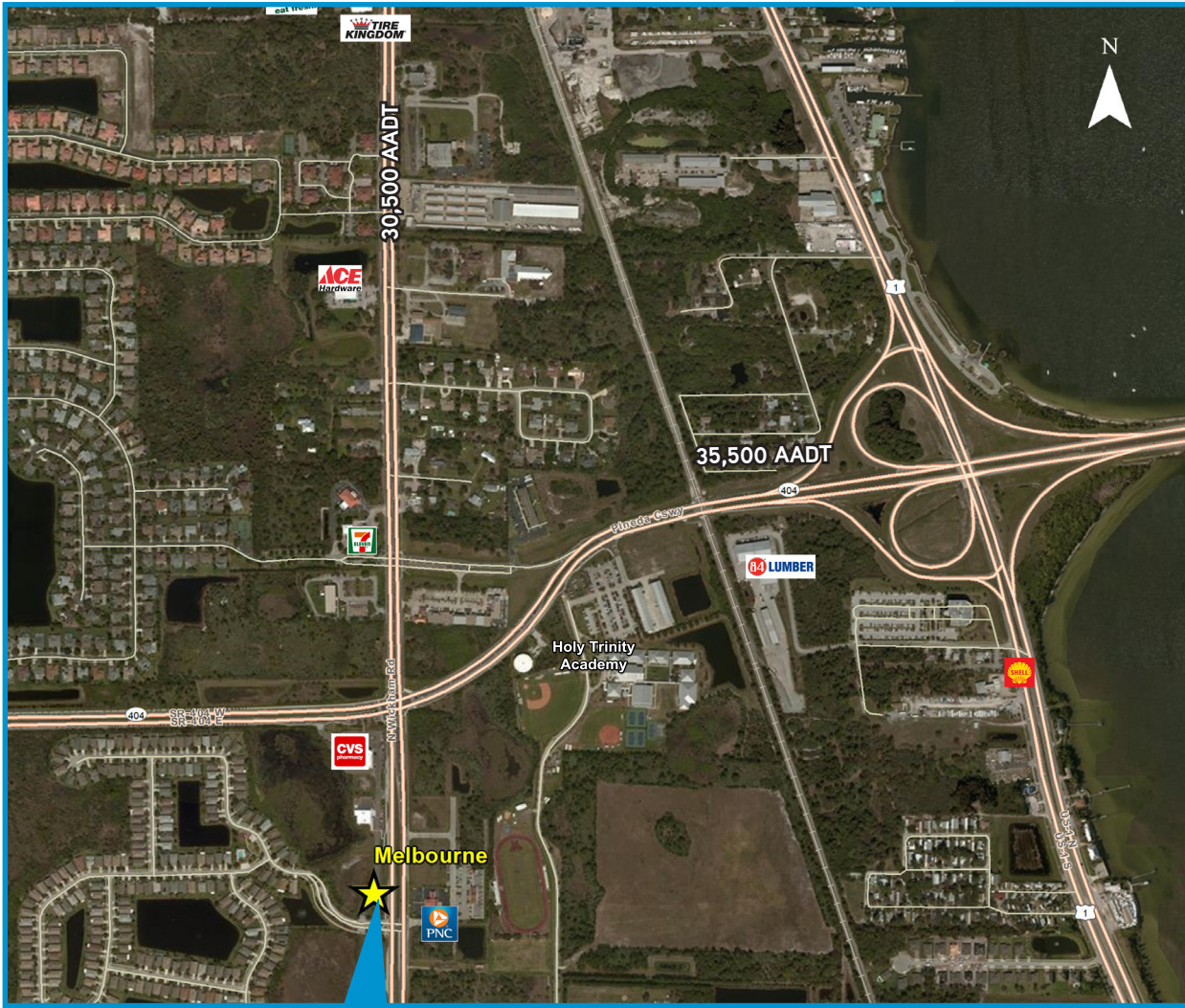
	<u>1-Mile</u>	<u>3-Mile</u>	<u>5-Mile</u>
Total Population	3,788	32,977	86,033
Total Households	1,417	13,792	37,287
Average HH Income	\$100,996	\$90,308	\$78,403

Call for pricing details!

SCOTT CORBIN
Executive Managing Director, Retail Services
+1 407 362 6164
scott.corbin@colliers.com

COLLIERS INTERNATIONAL
255 S. Orange Avenue, Suite 1300
Orlando, FL 32801
www.colliers.com

Market Aerial



Contact Us

SCOTT CORBIN
Executive Managing Director
Retail Services
+ 1 407 362 6164
scott.corbin@colliers.com

COLLIERS INTERNATIONAL
255 S. Orange Avenue Suite 1300
Orlando, FL 32801
www.colliers.com