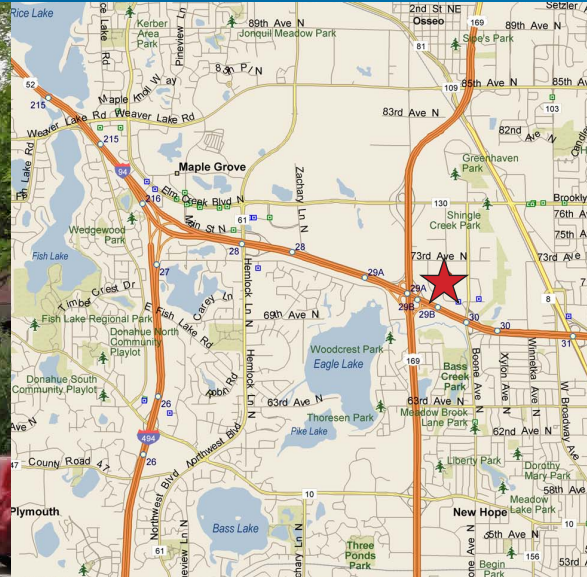


FOR LEASE > OFFICE/WAREHOUSE SPACE



Northland Corporate Center

7225 NORTHLAND DRIVE, BROOKLYN PARK, MN 55428



Building Amenities

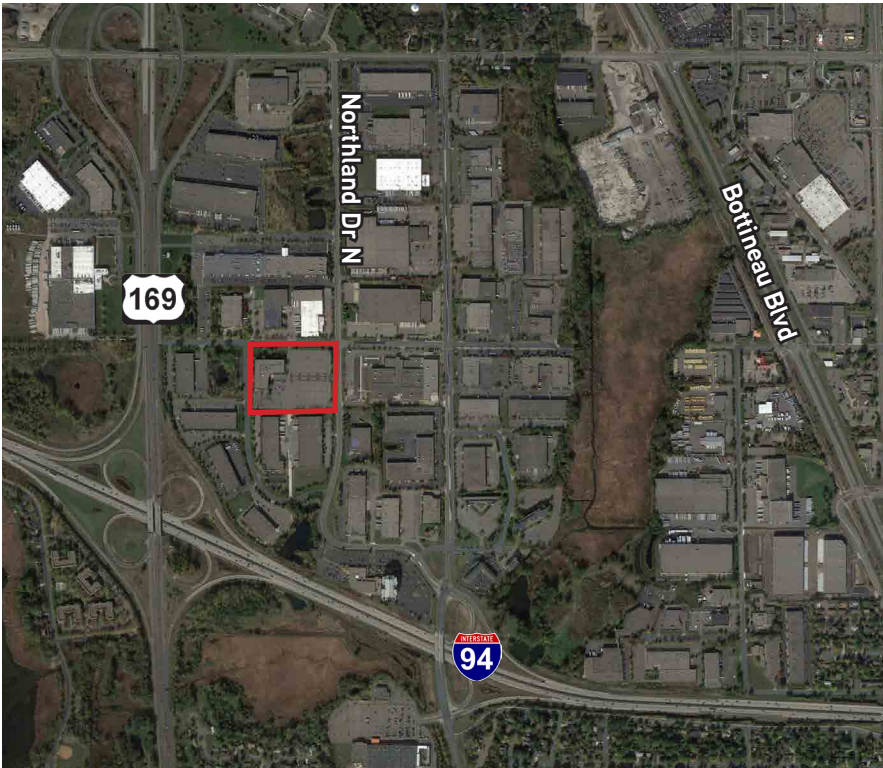
- > 189,204 square foot office and industrial building
- > 12.5' clear height
- > Built in 1985
- > Ample parking
- > Excellent access to I-694 and Hwy 169
- > Ability to add an additional dock or ramped drive-in door
- > Back up power available

Contact Us

ERIK NORDSTROM
952 897 7885
MINNEAPOLIS, MN
erik.nordstrom@colliers.com

COLLIERS INTERNATIONAL
4350 Baker Road, Suite 400
Minnetonka, MN 55343
www.colliers.com

Northland Corporate Center > Aerial



Contact Us

ERIK NORDSTROM
952 897 7885
MINNEAPOLIS, MN
erik.nordstrom@colliers.com

COLLIERS INTERNATIONAL
4350 Baker Road, Suite 400
Minnetonka, MN 55343
www.colliers.com



PROPERTY FACT SHEET



Northland Corporate Center

7225 NORTHLAND DRIVE, BROOKLYN PARK, MN 55428

PROPERTY ADDRESS:

7225 Northland Drive
Brooklyn Park, MN 55428

RENTAL RATES:

\$6.75 psf gross

BUILDING SQUARE FEET:

189,204 square feet total

PROPERTY ID:

3011921320001

CURRENTLY AVAILABLE:

LOWER LEVEL

37,320 square feet total

BTS office

37,320 square feet of warehouse

- Two (2) docks
- Divisible to 25,000 sf

AMENITIES:

- Excellent access to I-694 and Hwy 169
- Located on 9.47 acres
- Temperature controlled environment available
- Ample parking
- Lobby & man door access
- Ability to add an additional dock or ramped drive-in door
- Back up power available

YEAR BUILT:

1985

CLEAR HEIGHT:

12.5'

ZONING:

BP - Business Park



For Leasing Information, Contact:

ERIK NORDSTROM
952 897 7885
erik.nordstrom@colliers.com

COLLIERS INTERNATIONAL
4350 Baker Road, Suite 400
Minnetonka, MN 55343

www.colliers.com

