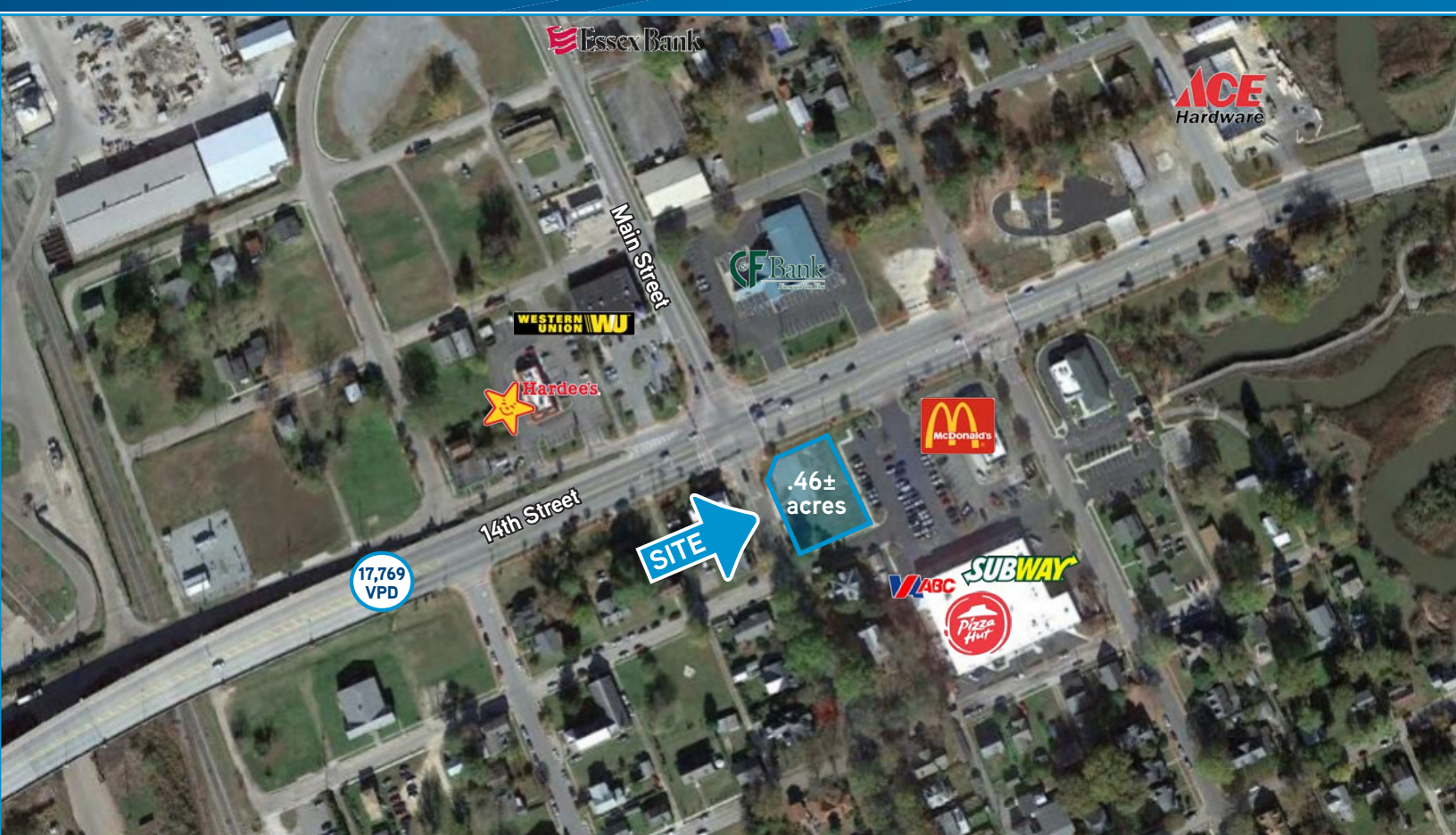


FOR LEASE > LAND

# 14th & Main St. | West Point

WEST POINT, VA 23181



## BEST CORNER IN WEST POINT!

### Property Features

- > High visibility location
- > Ground lease or build-to-suit
- > .46± acres
- > Traffic Count: 17,769 vehicles per day

DEMOGRAPHIC FACTS	1 MILE	3 MILES	5 MILES
POPULATION	1,303	4,162	6,423
CURRENT HOUSEHOLDS	519	1,609	2,300
MEDIAN HH INCOME	\$67,996	\$62,932	\$66,357

AGENT: MARTIN BLUM, CCIM  
804 591 2408  
RICHMOND, VA  
martin.blum@colliers.com

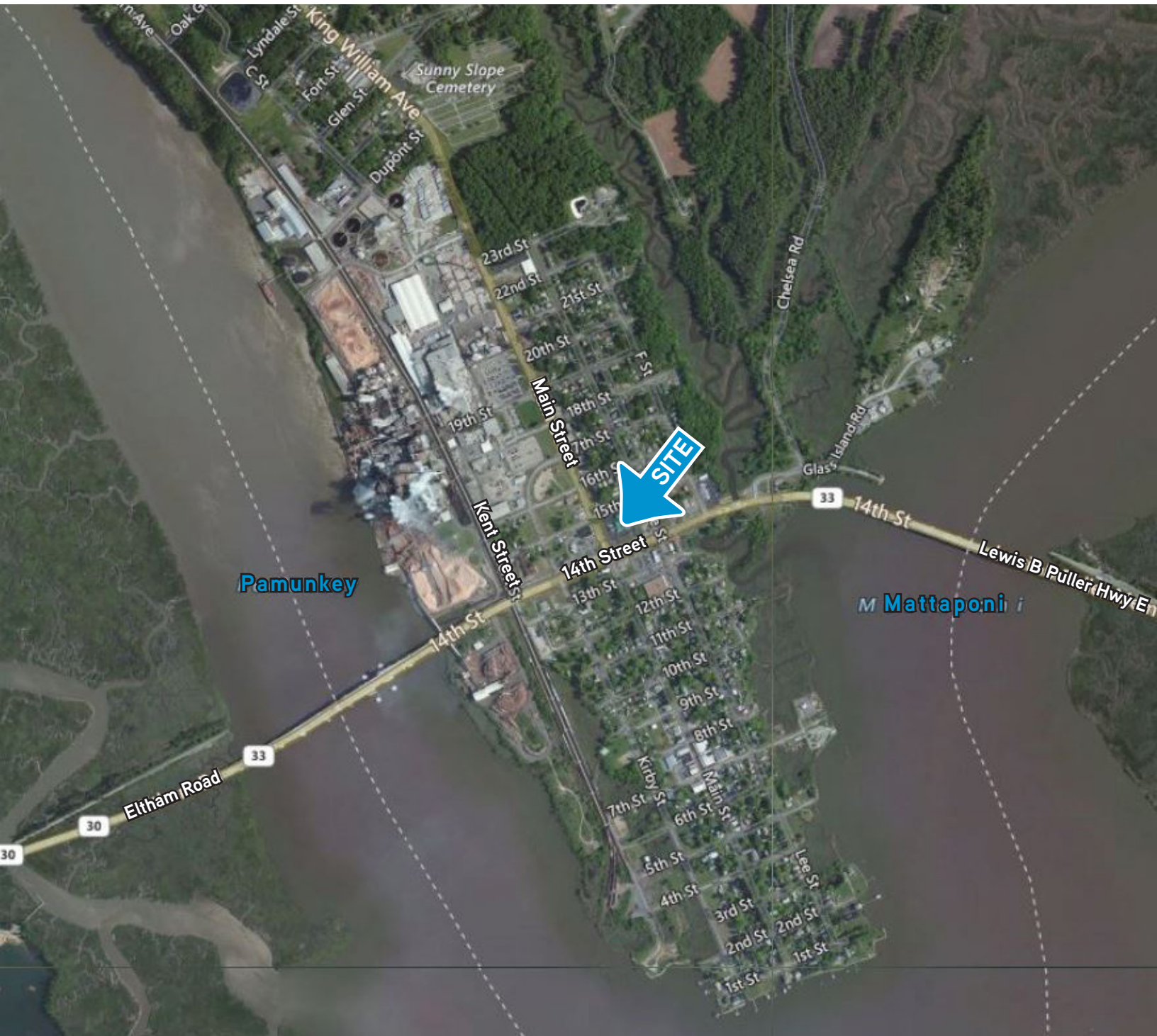
COLLIERS INTERNATIONAL  
7200 Glen Forest Drive, Suite 200  
Richmond, VA 23226  
www.colliers.com/richmond



FOR LEASE > LAND

# 14th & Main St. | West Point

WEST POINT, VA 23181



The information contained herein was obtained from sources, believed reliable, however, Colliers International makes no guarantees, warranties or representations as to the completeness or accuracy thereof. The presentation of this property is submitted subject to errors, omissions, change of price or conditions prior to sale or lease, or withdrawal without notice.  
File name: WestPoint\_46acres\_Lease rev 12-13-16

**COLLIERS INTERNATIONAL**  
7200 Glen Forest Drive, Suite 200  
Richmond, VA 23226  
[www.colliers.com/richmond](http://www.colliers.com/richmond)