

FOR SALE > INDUSTRIAL

# 60.07 ACRES AVAILABLE

DOVE ROAD AND MICHIGAN ROAD | PORT HURON, MICHIGAN



**CLOSE TO THE BRIDGE TO CANADA & TRUCK TERMINAL**

## > PROPERTY HIGHLIGHTS

- Zoned M-1
- 1 Mile to I-94 & 3 Miles to I-69
- Fifteen (15) Minutes to Blue Water Bridge and Sarnia, Ontario, Canada
- Frontage on Two (2) Main Roads:
  - 383' on Dove Road
  - 992' on Michigan Road
- Gas, Sewer, Water Available

**COLLIERS INTERNATIONAL**

2 Corporate Drive | Suite 300  
Southfield, Michigan 48076

For More Information Call:

**PETER McGRATH**

PHONE **248 540 1000** EXT **1848**

EMAIL [peter.mcgrath@colliers.com](mailto:peter.mcgrath@colliers.com)

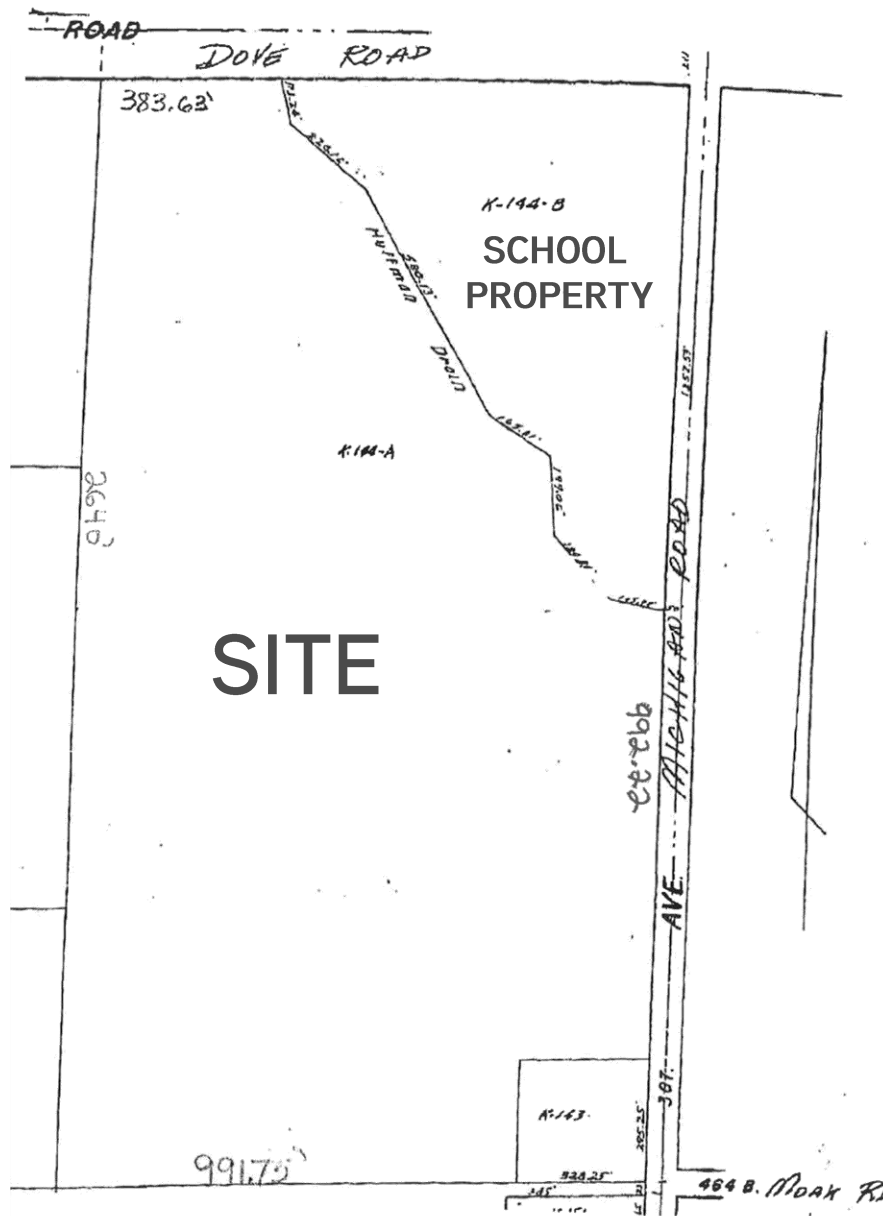
[colliers.com/detroit](http://colliers.com/detroit)



# 60.07 ACRES AVAILABLE



## > SURVEY



EMAIL [peter.mcgrath@colliers.com](mailto:peter.mcgrath@colliers.com)



2 Corporate Dr. | Suite 300  
Southfield, Michigan 48076

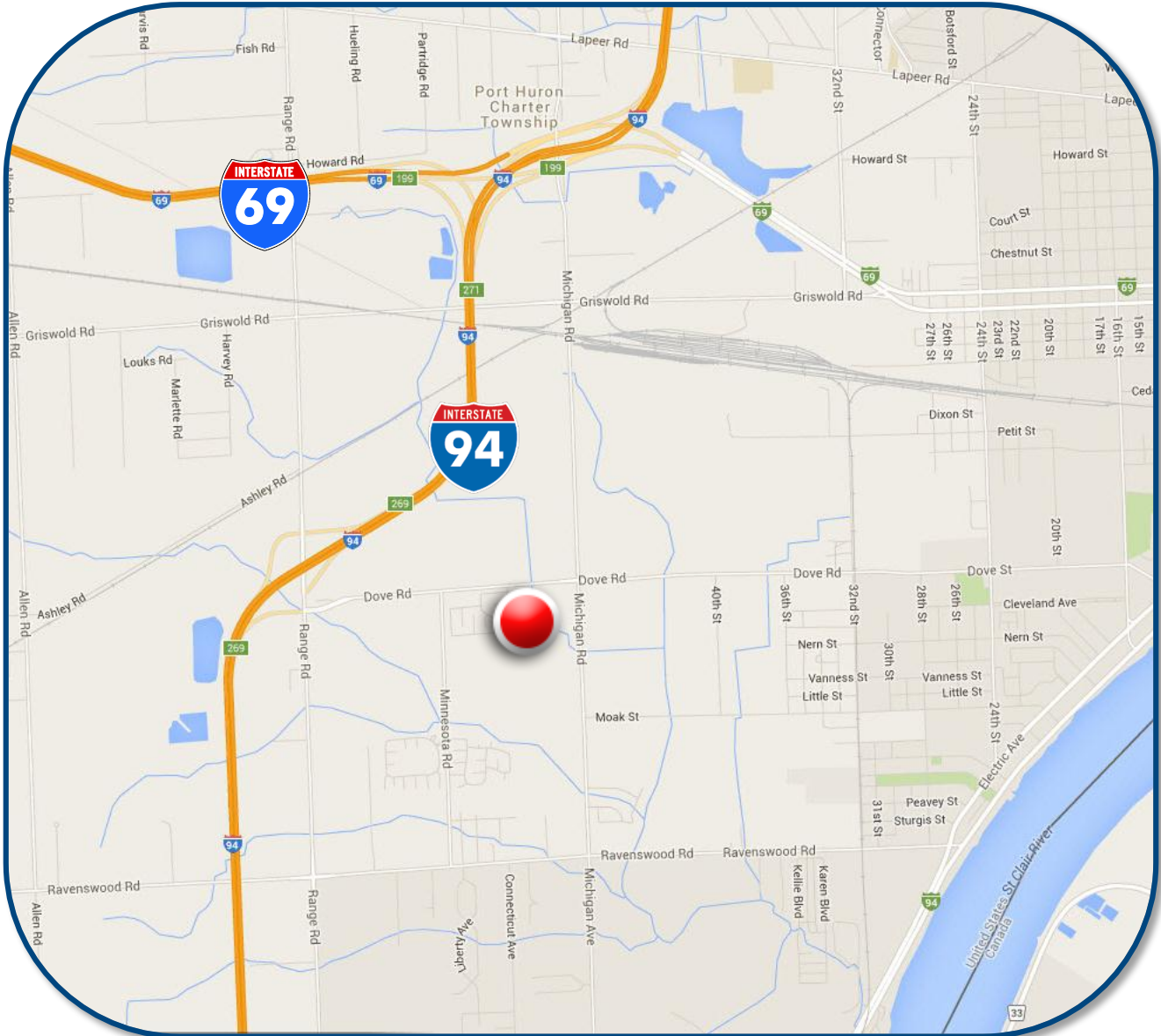
FOR SALE > INDUSTRIAL

# 60.07 ACRES AVAILABLE

DOVE ROAD AND MICHIGAN ROAD | PORT HURON, MICHIGAN



## > MAP



**PETER McGRATH**

PHONE 248 540 1000 EXT 1848

EMAIL [peter.mcgrath@colliers.com](mailto:peter.mcgrath@colliers.com)



**COLLIERS INTERNATIONAL**

2 Corporate Dr. | Suite 300  
Southfield, Michigan 48076



# Land Availability

## For Sale

Dove Road - 60.07 Acres

Dove Road and Michigan Road

Port Huron Township, MI 48060



**Sale Price:** \$700,000 Cash or Land Contract  
**Sale Price /Acre:** \$11,653  
**Sale Price /SF:** \$0.27  
**Acreage- Min.:** 60.07  
**Acreage- Max.:** 60.07  
**Zoning:** M-1  
**Utilities:** Gas, Sewer, Water

**County:** St. Clair  
**Crossroads:** Michigan and I-94  
**Parcel #:** 74-28-019-2002

Excellent 60.07 Acres Near Bridge to Canada and New Truck Terminal.

One (1) Mile to I-94; Three (3) Miles to I-69.

Fifteen (15) Minutes to Blue Water Bridge and Sarnia, Ontario, Canada.

Frontage on Two (2) Main Roads:

383' on Dove Road; 992' on Michigan Road.

**For more information, contact:**



**Peter McGrath**

peter.mcgrath@colliers.com

**(248) 540-1000**

2 Corporate Drive, Suite 300  
Southfield, MI 48076  
248 540 1000

400 E. Washington St.  
Ann Arbor, MI 48104  
734 994 3100

[www.colliers.com](http://www.colliers.com)