

FOR LEASE > RETAIL & OFFICE SPACE

# Skyway Center

3558 SKYWAY DRIVE, SANTA MARIA, CALIFORNIA



## Now Available

> **Suite A:** *Fitness/Other* | 2,908 - 4,204 SF | \$1.85/SF + CAMs

Currently built out as fitness space, this suite has high ceilings 2 private separate restrooms with showers and 2 large roll up doors for excellent ventilation. Adjacent suite (Suite B) also available for a total of 4,204 SF.

> **Suite B:** *Retail/Office/Fitness* | 1,296 SF | \$1.85/SF + CAMs.

Retail/office space in shell condition. Can be combined with adjacent space (Suite A) for a combined total of 4,204 Sf.

## Property Overview

Santa Maria's exciting new development at the northwest corner of HWY 135 and Skyway Drive across from the SMX Airport. This 46,000+ square foot center has excellent visibility at the corner of one of the area's highest traveled intersections. The Skyway Center will feature a number of dining options including Santa Maria Brewing Co, Burgerim, Viet Kitchen as well as other retail shops and offices with lots of open patio seating and mosaic paseos.

## Building Amenities

- > New construction with ample parking
- > High exposure on Skyway Dr & HWY 135
- > Local traffic counts of 24,000 ADT
- > Adjacent to high concentration of underserved employment



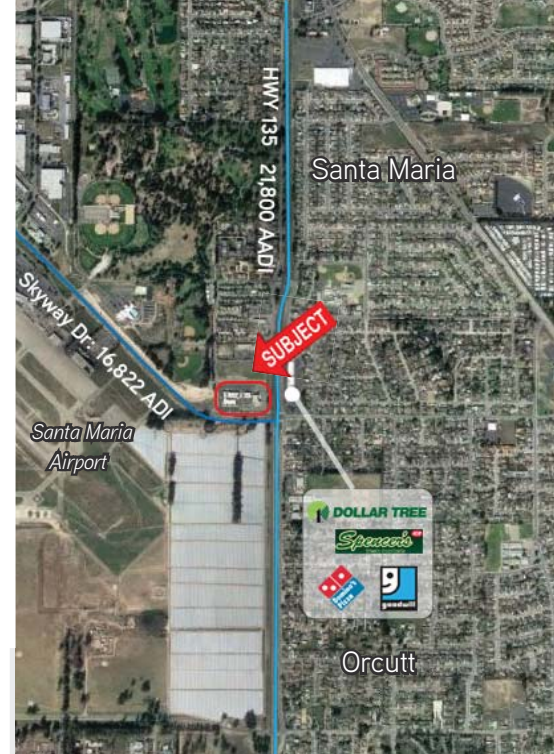
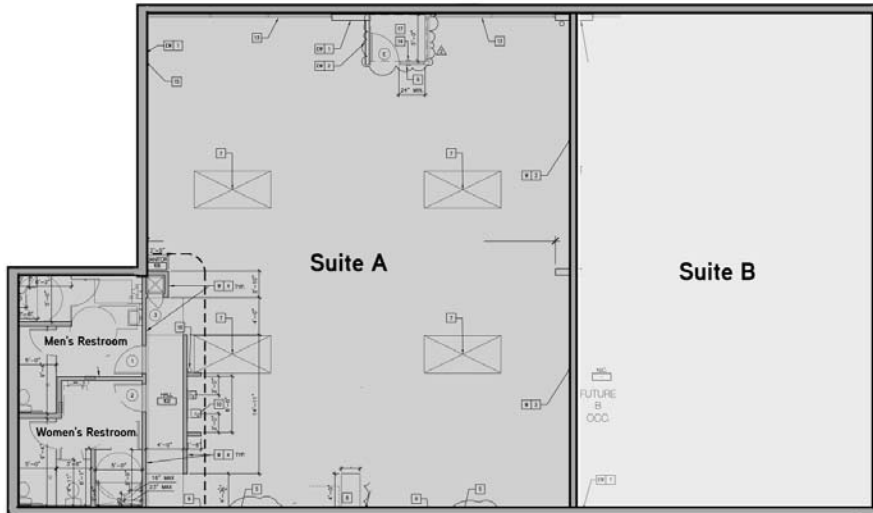
JASON HART  
805 595 1555 | CELL 1 805 709 6491  
CENTRAL CALIFORNIA COAST  
jason.hart@colliers.com

TONY ANDREINI  
805 595 1555 | CELL 805 801 1924  
CENTRAL CALIFORNIA COAST  
tony.andreini@colliers.com

COLLIERS INTERNATIONAL  
575 Price Street, Suite 211  
Pismo Beach, CA 93449  
www.colliers.com

## Floor Plan > Suites

- > **Suite A:** Fitness/Other | 2,908 - 4,204 SF | \$1.85/SF + CAMs
- > **Suite B:** Retail/Office/Fitness | 1,296 SF | \$1.85/SF + CAMs.



## Site Plan > Skyway Shopping Center

Showcased on the corner of Skyway Drive and HWY 135



Skyway Dr.

Highway 135

## Contact Us

AGENT: JASON HART

805 595 1555 | CELL 805 709 6491

CENTRAL CALIFORNIA COAST

BRE# 1334694

[jason.hart@colliers.com](mailto:jason.hart@colliers.com)

AGENT: TONY ANDREINI

805 595 1555 | CELL 805 801 1924

CENTRAL CALIFORNIA COAST

BRE# 02039290

[tony.andreini@colliers.com](mailto:tony.andreini@colliers.com)

COLLIERS INTERNATIONAL

575 Price Street, Suite 211

Pismo Beach, CA 93449

[www.colliers.com](http://www.colliers.com)