



# WAIALE

BUSINESS PARK

[www.waialebusinesspark.com](http://www.waialebusinesspark.com)



PUUONE LOOP

KAMEHAMEHA AVE

EAST WAIKO ROAD





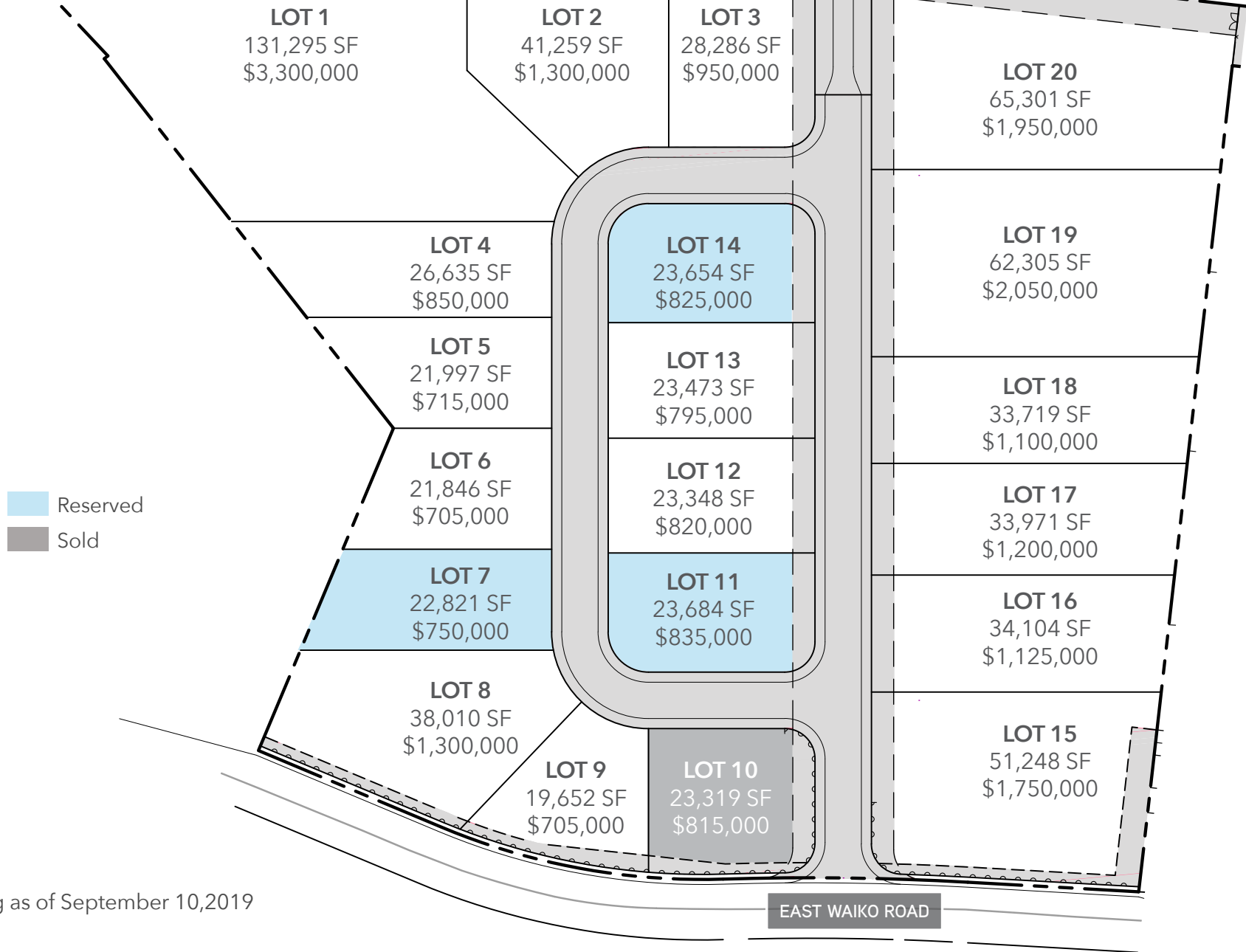
# WAIALE BUSINESS PARK

Waiale Business Park presents a unique opportunity to own fee simple high exposure light industrial lots in Central Maui at a great value. These lots are located at the busy intersection of East Waiko Road and Kuihelani Highway and adjacent to the existing Consolidated Baseyard. Waiale Business Park is being constructed by Goodfellow Bros. Inc., and managed by Pacific Rim Land Inc. Both companies have a long development and construction track record in Hawaii including Lahaina Business Park and Pulehunui Industrial Park. Amenities include off-site drainage connections, private water and wastewater, and electricity stubbed to each lot.

Surrounded by more than 80,000 residents within a 10-mile radius, Waiale Business Park provides easy access to Kahului, Kihei, and Lahaina. The property is located within minutes of Kahului Harbor, Airport, and Maui Memorial Hospital.

<b>Area:</b>	Waikapu
<b>TMK No:</b>	380071020000
<b>Zoning:</b>	M-1 Zoning
<b>Size Available:</b>	20 parcels (19,652 SF to 131,295 SF)
<b>Sale Price:</b>	\$25.13 - \$35.87 PSF
<b>Tenure:</b>	Fee Simple
<b>Features &amp; Benefits:</b>	<ul style="list-style-type: none"><li>• Zoning provides for a variety of uses</li><li>• Private water system</li><li>• Water, sewer, electric, and drainage provided to each lot</li><li>• Convenient access from Kuihelani Highway</li><li>• Flexible CC &amp; R's and Design Guidelines</li><li>• In the center of the future Waiale and Waikapu Masterplanned Communities</li></ul>

# SITE PLAN



Pricing as of September 10, 2019



