

*Turn-Key Restaurant For Lease*

# EMPIRE BUILDING

205 N 10TH ST | BOISE, ID



## PROPERTY INFORMATION

Building Size:	61,051 SF
Parking:	Downtown parking garages
Zoning:	C5-DD
NNN:	\$4.00 PSF

## SPACE AVAILABLE

Suite	Size	Rate
Suite 110	3,584 SF	\$16.00 PSF NNN
Main Floor	1,784 SF	
Mezzanine	1,800 SF	
Basement Storage	503 SF	Contact Agent

## HIGHLIGHTS

- » Downtown restaurant with indoor/outdoor dining area
- » High-quality finishes throughout the space
- » Surrounded by new development and downtown retail

Demographics	1 Mile	3 Miles
Daytime Population (16+)	54,622	119,718
Population	12,680	90,724
Avg. Income	\$54,584	\$68,354
Avg. Home Value	\$278,603	\$244,209

**Colliers**  
INTERNATIONAL

**MIKE CHRISTENSEN**  
208 472 2866  
mike.christensen@colliers.com

**DAVID CADWELL**  
208 472 3857  
david.cadwell@colliers.com

**JAMIE ANDERSON**  
208 472 2842  
jamie.anderson@colliers.com

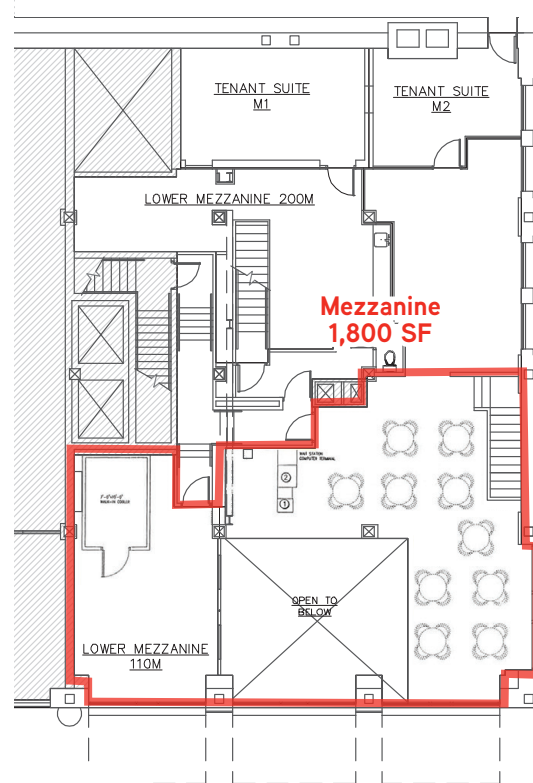
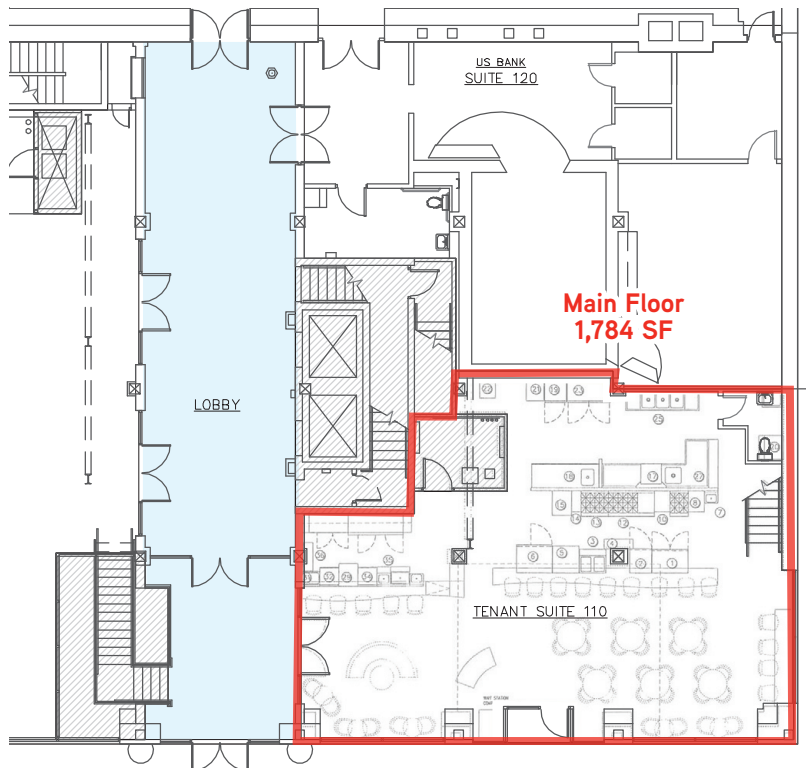
**FOR  
LEASE**

# EMPIRE BUILDING RESTAURANT

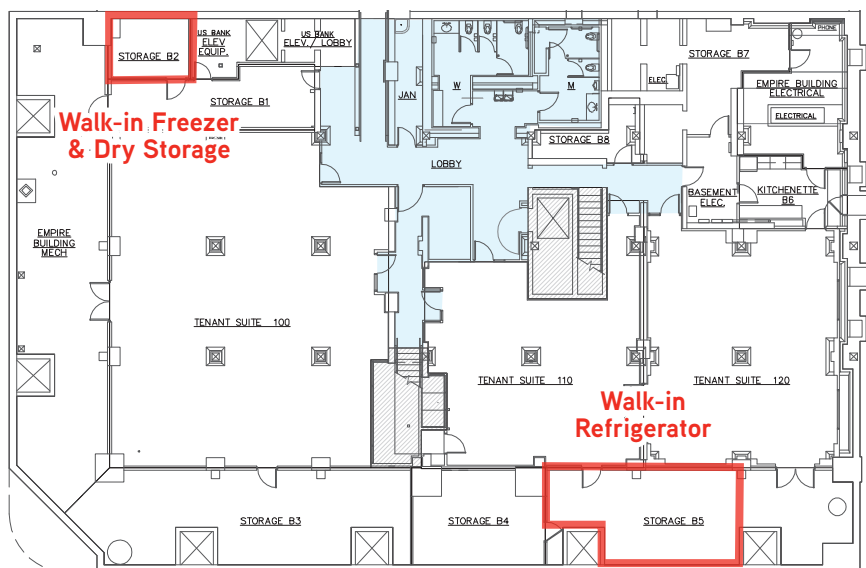
205 N 10TH STREET | BOISE, ID



## Main Level & Mezzanine



## Below Grade



**MIKE CHRISTENSEN**  
208 472 2866  
mike.christensen@colliers.com

**DAVID CADWELL**  
208 472 3857  
david.cadwell@colliers.com

**JAMIE ANDERSON**  
208 472 2842  
jamie.anderson@colliers.com



**FOR  
LEASE**

# EMPIRE BUILDING RESTAURANT

205 N 10TH STREET | BOISE, ID



**MIKE CHRISTENSEN**  
208 472 2866  
[mike.christensen@colliers.com](mailto:mike.christensen@colliers.com)

**DAVID CADWELL**  
208 472 3857  
[david.cadwell@colliers.com](mailto:david.cadwell@colliers.com)

**JAMIE ANDERSON**  
208 472 2842  
[jamie.anderson@colliers.com](mailto:jamie.anderson@colliers.com)



**FOR  
LEASE**

# EMPIRE BUILDING RESTAURANT

205 N 10TH STREET | BOISE, ID

**Colliers**  
INTERNATIONAL



**MIKE CHRISTENSEN**  
208 472 2866  
mike.christensen@colliers.com

**DAVID CADWELL**  
208 472 3857  
david.cadwell@colliers.com

**JAMIE ANDERSON**  
208 472 2842  
jamie.anderson@colliers.com