



LOGISTICS[®]
PROPERTY
CO

94 LOGISTICS PARK

Building 2, 4213 128th Avenue, Kenosha, WI 53144

159,418 SF AVAILABLE (Div.)



LOCATION AND ECONOMIC SIGNIFICANCE

- Park can accommodate 50,000 - 159,418 SF
- Over 1,000 ft of I-94 frontage
- Two full I-94 Interchanges 1 mile away
- Full service travel plaza / truck stop 1.5 miles away
- 40 minutes to O'Hare Airport
- 25 minutes to Mitchell Airport
- 60 miles to Chicago Downtown "Loop"
- Net exporter of 11,000 jobs daily
- Low real estate taxes and utility rates
- Pro-business climate
- Corporate income tax rate: 0%
- Relocation and job tax credits available



6250 N River Road
Suite 11-100
Rosemont, IL 60018
colliers.com/chicago

Ned Frank

+1 847 698 8261
ned.frank@colliers.com

Steve Sewart

+1 414 278 6823
steve.sewart@colliers.com

Pat Hake

+1 847 698 8525
pat.hake@colliers.com

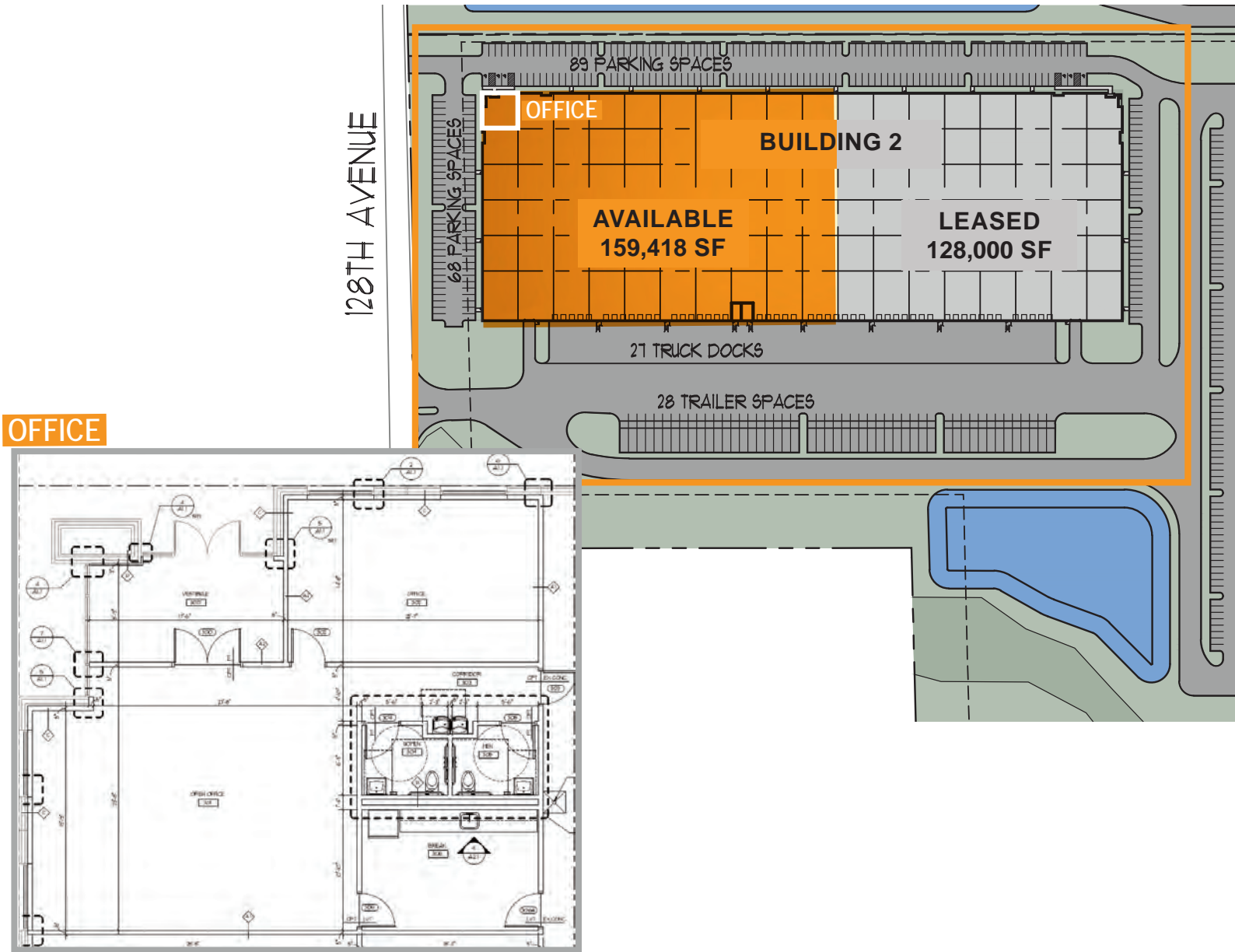


LOGISTICS[®]
PROPERTY
CO

94 LOGISTICS PARK

Building 2, 4213 128th Avenue, Kenosha, WI 53144

159,418 SF AVAILABLE (Div.)



BUILDING 2 – 159,418 SF AVAILABLE NOW

- Total Building: 287,418 SF
- Available: 159,418 SF (divisible to 50,000 SF)
- 1,630 SF spec office
- 32' clear height
- 157 auto parking stalls, 28 trailer stalls
- 27 loading docks, 1 drive-in door
- ESFR
- 50' x 50' column spacing with 70' speed bay
- Dimensions: 320' x 498'



6250 N River Road
Suite 11-100
Rosemont, IL 60018
colliers.com/chicago

Ned Frank
+1 847 698 8261
ned.frank@colliers.com

Pat Hake
+1 847 698 8525
pat.hake@colliers.com

Steve Sewart
+1 414 278 6823
steve.sewart@colliers.com

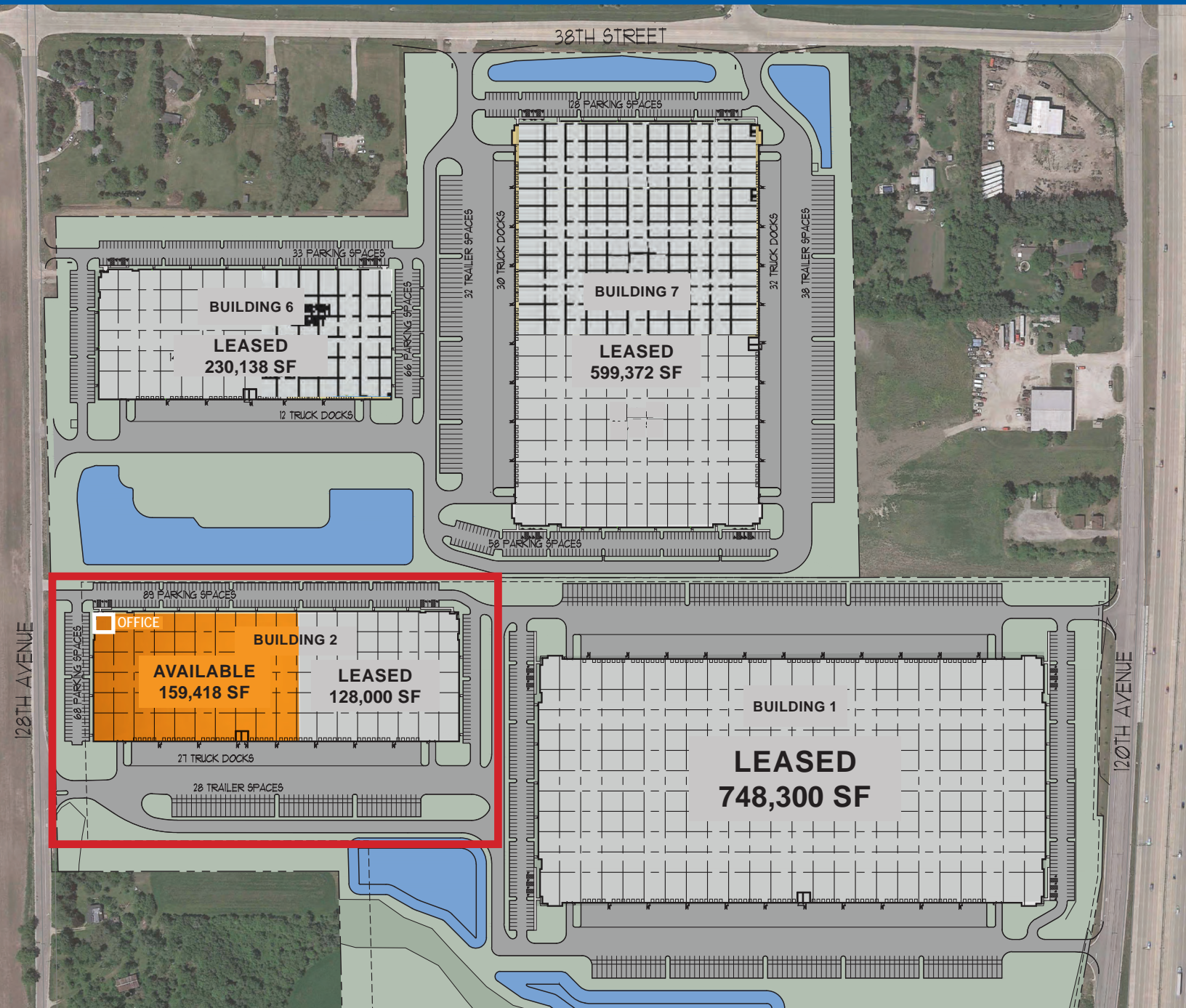


LOGISTICS[®]
PROPERTY
CO

94 LOGISTICS PARK

Building 2, 4213 128th Avenue, Kenosha, WI 53144

159,418 SF AVAILABLE (Div.)



50,000 - 159,418 SF AVAILABLE



6250 N River Road
Suite 11-100
Rosemont, IL 60018
colliers.com/chicago

Ned Frank

+1 847 698 8261

ned.frank@colliers.com

Steve Sewart

+1 414 278 6823

steve.sewart@colliers.com

Pat Hake

+1 847 698 8525

pat.hake@colliers.com



LOGISTICS[®]
PROPERTY
CO

94 LOGISTICS PARK

Building 2, 4213 128th Avenue, Kenosha, WI 53144

159,418 SF AVAILABLE (Div.)



6250 N River Road
Suite 11-100
Rosemont, IL 60018
colliers.com/chicago

Ned Frank

+1 847 698 8261
ned.frank@colliers.com

Steve Sewart

+1 414 278 6823
steve.sewart@colliers.com

Pat Hake

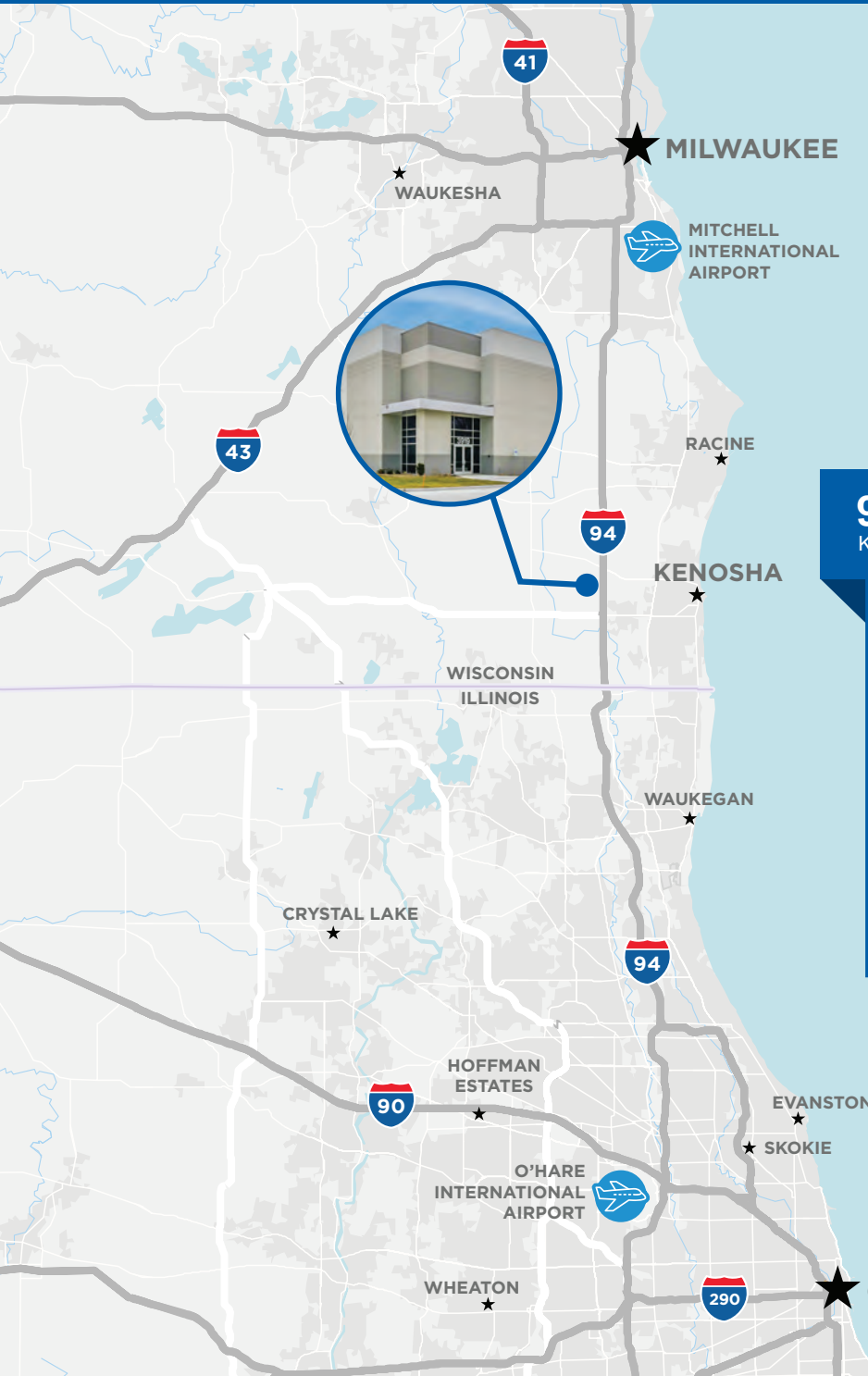
+1 847 698 8525
pat.hake@colliers.com



LOGISTICS[®]
PROPERTY
CO

94 LOGISTICS PARK

Kenosha, WI



94 LOGISTICS PARK

Kenosha, WI 53144

	Distance (MI)	Drive Time
DISTANCES TO CITIES		
Milwaukee, WI	33	33 min
Chicago, IL	60	60 min
DISTANCES TO AIRPORTS		
Mitchell International Airport	26	25 min
O'Hare International Airport	48	40 min



6250 N River Road
Suite 11-100
Rosemont, IL 60018
colliers.com/chicago

Ned Frank

+1 847 698 8261
ned.frank@colliers.com

Steve Sewart

+1 414 278 6823
steve.sewart@colliers.com

Pat Hake

+1 847 698 8525
pat.hake@colliers.com

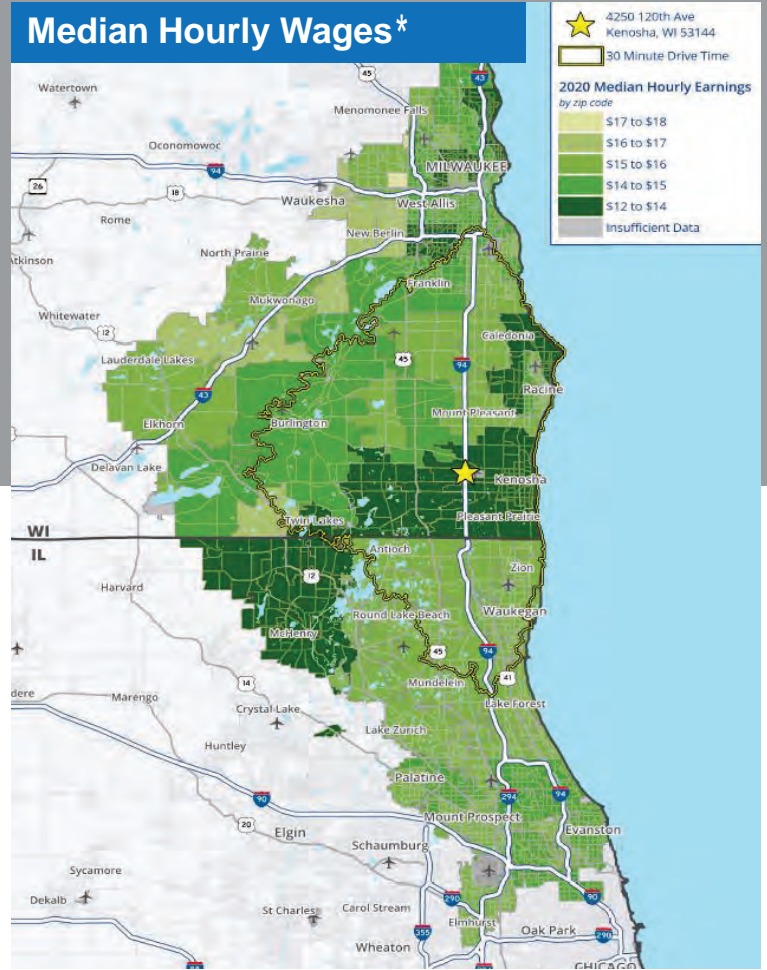
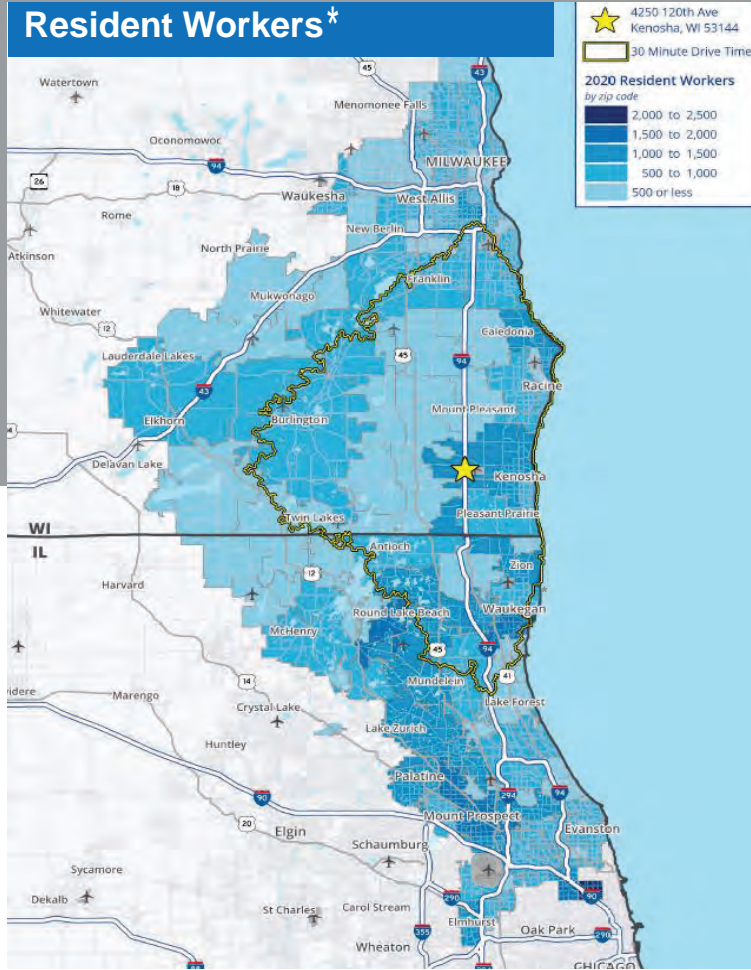


LOGISTICS[®]
PROPERTY
CO

94 LOGISTICS PARK

Kenosha, WI

WAREHOUSE WORKER LABORSHED OVERVIEW Laborshed Within A 60-Minute Drive Time



The property is well located to draw from a strong local talent pool as well as that of the southern Milwaukee and northern Chicago suburbs.

Kenosha is one of the lowest cost labor markets in the Chicago MSA due to its low cost of living and abundant labor supply.

* February 2021 Labor Study for 94 LOGISTICS PARK, KENOSHA, WI



6250 N River Road
Suite 11-100
Rosemont, IL 60018
colliers.com/chicago

Ned Frank

+1 847 698 8261
ned.frank@colliers.com

Steve Sewart

+1 414 278 6823
steve.sewart@colliers.com

Pat Hake

+1 847 698 8525
pat.hake@colliers.com

Non-Residential Customers

Wisconsin law requires all real estate licensees to give the following information about brokerage services to prospective customers.

Prior to negotiating on your behalf the Brokerage firm, or an agent associated with the firm, must provide you the following disclosure statement:

Broker Disclosure to Customers

You are a customer of the broker. The broker is either an agent of another party in the transaction or a subagent of another broker who is the agent of another party in the transaction. The broker, or a salesperson acting on behalf of the broker, may provide brokerage services to you, the broker owes you, the customer, the following duties:

- The duty to provide brokerage services to you fairly and honestly.
- The duty to exercise reasonable skill and care in providing brokerage services to you.
 - The duty to provide you with accurate information about market conditions with a reasonable time if you request it, unless prohibited by law.
- The duty to protect your confidentiality. Unless the law requires it, the broker will not disclose your confidential information or the confidential information to other parties.
- The duty to safeguard trust funds and other property the broker holds.
- The duty, when negotiating, to present contract proposals in an objective and unbiased manner and disclose the advantages and disadvantages of the proposals.

Please review this information carefully. A broker or salesperson can answer your questions about brokerage services, but if you need legal advice, tax advice or a professional home inspection contact an attorney, tax advisor, or home inspector. This disclosure is required by section 452.135 of the Wisconsin statutes and is for information only. It is a plain-language summary of a broker's duties to a customer under section 452.133 (1) of the Wisconsin statutes.

Confidentiality Notice to Customers

Broker will keep confidential any information given to broker in confidence, or any information obtained by broker that he or she knows a reasonable person would want to be kept confidential. Unless the information must be disclosed by law or you authorize the broker to disclose particular information. A broker shall continue to keep the information confidential after broker is no longer providing brokerage services to you.

The following information is required to be disclosed by law:

1. Material adverse facts, as defined in section 452.01 (5g) of the Wisconsin Statutes.
2. Any facts known by the broker that contradict any information included in a written inspection report on the property or real estate that is the subject of the transaction.

No representation is made as to the legal validity of any provision or the adequacy of any provision in any specific transaction.

*Copyright 2007 by Wisconsin REALTORS Association.
Drafted by Attorney Debra Peterson Conrad.*

To ensure that the broker is aware of what specific information you consider confidential, you may list that information below. At a later time, you may also provide the broker with other information you consider to be confidential.

Confidential information: _____

Non-Confidential information: (The following information may be disclosed by Broker): _____

(Insert information you authorize the broker to disclose such as financial qualification information.)

Consent to Telephone Solicitation

I/We agree that the broker and any affiliated settlement service providers (for example, a mortgage company or title company) may call our/my home or cell phone numbers regarding issues, goods and services related to the real estate transaction until I/we withdraw this consent in writing.

List Home/Cell Numbers: _____

Sex Offender Registry

Notice: You may obtain information about the sex offender registry and persons registered with the registry by contacting the Wisconsin Department of Corrections on the Internet at <http://offender.doc.state.wi.us/public/>

Definition of Material Adverse Facts

A "material adverse fact" is defined in Wis. Stat 452.01 (5g) as an adverse fact that a party indicates is of such significance, or that is generally recognized by a competent licensee as being of such significance to a reasonable party, that it affects or would affect the party's decision to enter into a contract or agreement concerning a transaction or affects or would affect the party's decision to enter into a contract or agreement concerning a transaction or affects or would affect the party's decision about the terms of such a contract or agreement. An "adverse" fact is defined in Wis. Stat. 452.01 (1e) as a condition or occurrence that a competent licensee generally recognizes will significantly and adversely affect the value of the property, significantly reduce the structural integrity of improvements to real estate, or present a significant health risk to occupants of the property; or information that indicates that a party to a transaction is not able to or does not intend to meet his or her obligations under a contract or agreement made concerning the transaction.