



Chatsworth Business Park

20828 Lassen St., Chatsworth, CA 91311

FOR LEASE > 11,491 SF
GLP



Property Highlights:

- Major street frontage
- Corner of De Soto Avenue and Lassen Street
- Excellent truck access
- 1 ground level door
- 900 SF of office space
- 15-foot clear height
- 400 Amps, 120-240 Volts
- 23 parking spaces
- Clear span warehouse
- 3 restrooms
- Can be combined with 20826 Lassen St.
- Great access to  

Offering:

\$13,215 Gross per month (\$115 psf)

\$0.05 CAM fee psf per month



Colliers International makes no guarantees, representations or warranties of any kind, expressed or implied, regarding the information including, but not limited to, warranties of content, accuracy and reliability. This publication is the copyrighted property of Colliers International and / or its licensor(s). 2018. All rights reserved.

Jeff Abraham, SIOR
Vice President
License No. 01830909
818 325 4109
jeff.abraham@colliers.com

Patrick DuRoss, SIOR
Senior Vice President
License No. 01461031
818 325 4127
patrick.duross@colliers.com

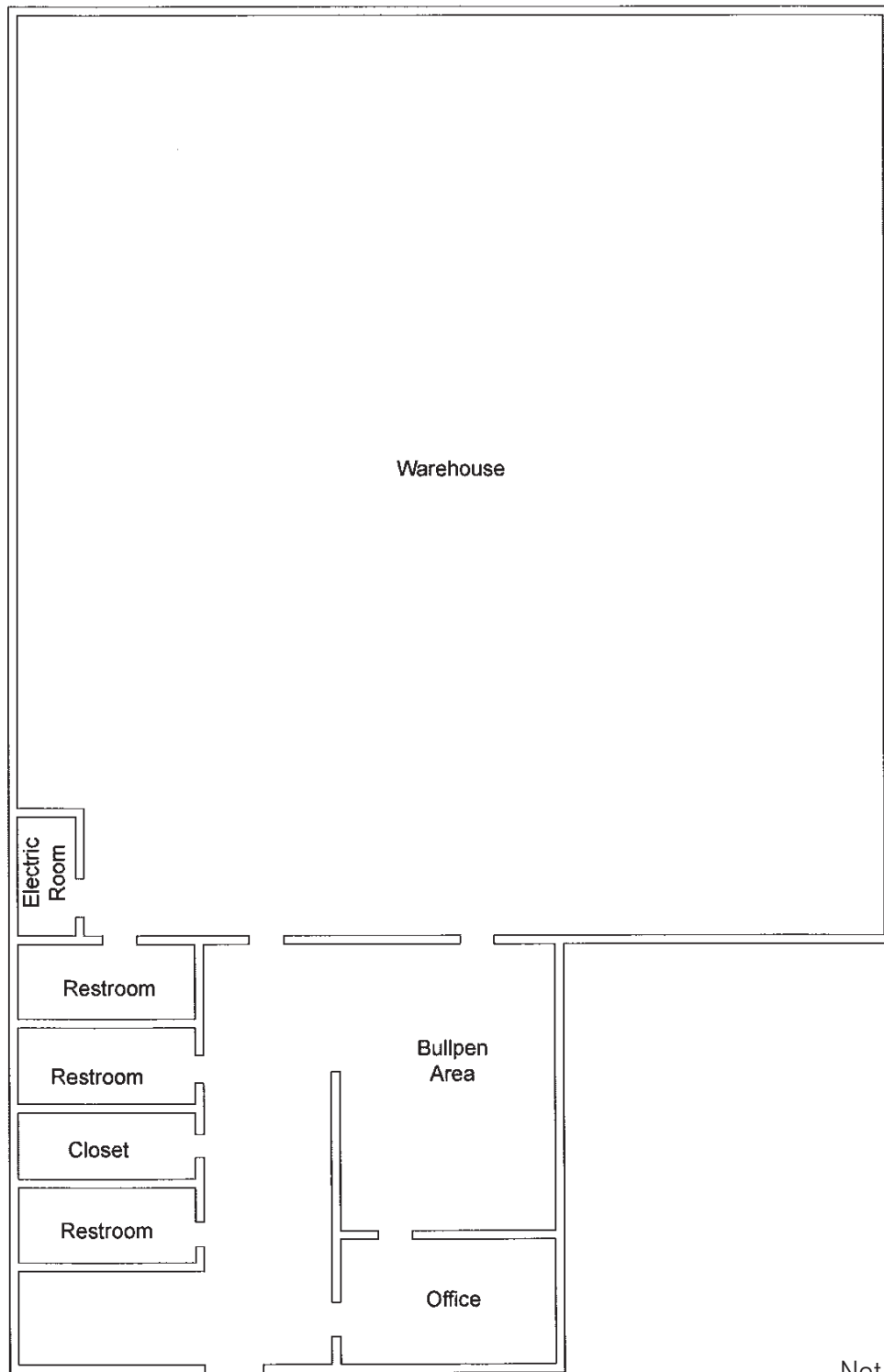
John DeGrinis, SIOR
Senior Executive Vice President
License No. 00918958
818 325 4110
john.degrinis@colliers.com



Chatsworth Business Park

20828 Lassen Street, Chatsworth, CA 91311

FOR LEASE > 11,491 SF
GLP



Not drawn to scale

Colliers International makes no guarantees, representations or warranties of any kind, expressed or implied, regarding the information including, but not limited to, warranties of content, accuracy and reliability. This publication is the copyrighted property of Colliers International and / or its licensor(s). 2018. All rights reserved.

Jeff Abraham, SIOR
Vice President
License No. 01830909
818 325 4109
jeff.abraham@colliers.com

Patrick DuRoss, SIOR
Senior Vice President
License No. 01461031
818 325 4127
patrick.duross@colliers.com

John DeGrinis, SIOR
Senior Executive Vice President
License No. 00918958
818 325 4110
john.degrinis@colliers.com

