

Chatsworth Business Park



20826-20828 Lassen St., Chatsworth, CA 91311

FOR LEASE > 21,489 SF

GLP



Property Highlights:

- Major street frontage
- Corner of De Soto Avenue and Lassen Street
- Excellent truck access
- 2 ground level doors
- 2,980 SF of office space
- Only one column line
- 15-foot clear height
- 800 Amps, 120-240 Volts
- 43 parking spaces
- 6 restrooms
- Great access to  

Offering:

\$24,712 Gross per month (\$1.15 psf)

\$0.05 CAM fee psf per month



Colliers International makes no guarantees, representations or warranties of any kind, expressed or implied, regarding the information including, but not limited to, warranties of content, accuracy and reliability. This publication is the copyrighted property of Colliers International and / or its licensor(s). 2018. All rights reserved.

Jeff Abraham, SIOR
Vice President
License No. 01830909
818 325 4109
jeff.abraham@colliers.com

Patrick DuRoss, SIOR
Senior Vice President
License No. 01461031
818 325 4127
patrick.duross@colliers.com

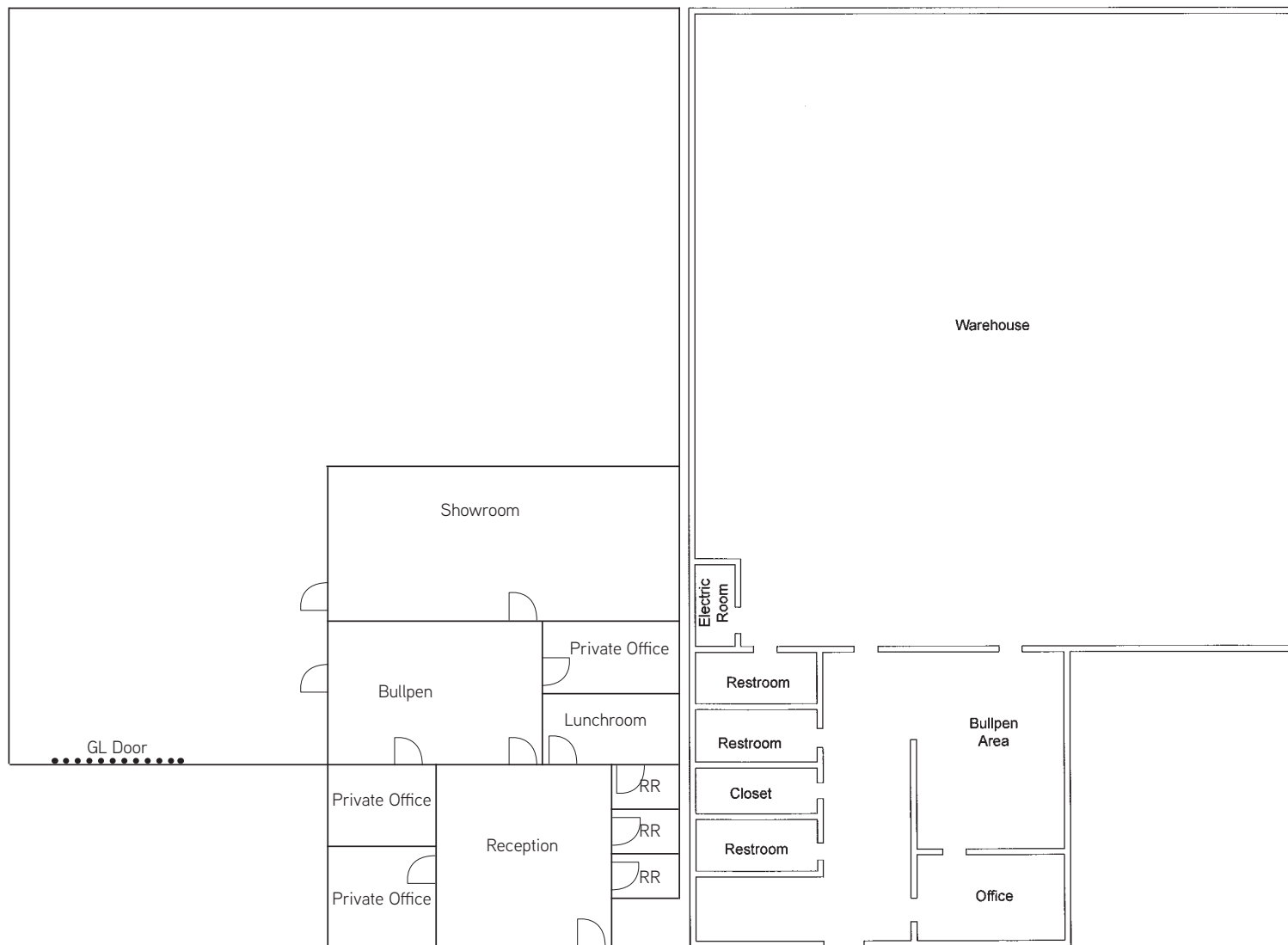
John DeGrinis, SIOR
Senior Executive Vice President
License No. 00918958
818 325 4110
john.degrinis@colliers.com



Chatsworth Business Park

20826-20828 Lassen Street, Chatsworth, CA 91311

FOR LEASE > 21,489 SF



Not drawn to scale

Colliers International makes no guarantees, representations or warranties of any kind, expressed or implied, regarding the information including, but not limited to, warranties of content, accuracy and reliability. This publication is the copyrighted property of Colliers International and / or its licensor(s). 2018. All rights reserved.

Jeff Abraham, SIOR
Vice President
License No. 01830909
818 325 4109
jeff.abraham@colliers.com

Patrick DuRoss, SIOR
Senior Vice President
License No. 01461031
818 325 4127
patrick.duross@colliers.com

John DeGrinis, SIOR
Senior Executive Vice President
License No. 00918958
818 325 4110
john.degrinis@colliers.com

