

1220 n. market

Wilmington, DE



available

Quality Office Space features:

- › 98,970 SF ten-story office building
- › Multi-suites and full floor availabilities
- › Naming rights available
- › Large contiguous block of space
- › Superior price point
- › On-site security from 7am-10pm
- › Public and private parking facilities located within two-block radius
- › Energy Management System for HVAC controls

contact:

RICK KINGERY

Vice President

+1 302 425 4078

rick.kingery@colliers.com

COLLIERS INTERNATIONAL

300 Delaware Avenue, Suite 1014

Wilmington, DE 19801

+1 302 425 4000

www.colliers.com/wilmington



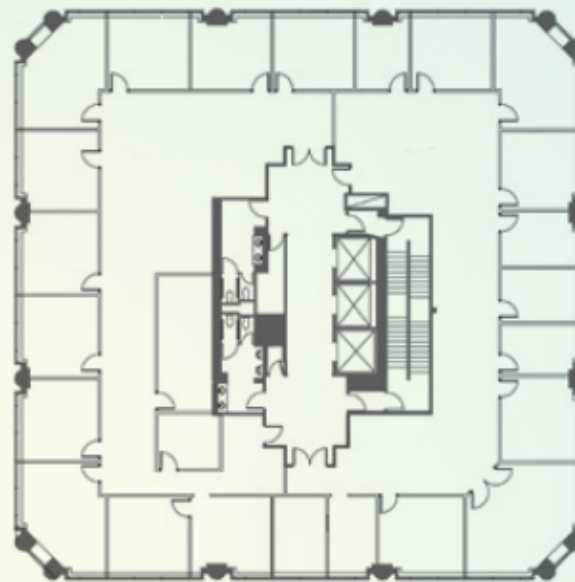
Amenities

P = PARKING



1220 n. market

Typical Floor Plan



Map Restaurants

- 1 Basil Bar & Grill (Sheraton)
- 2 Cavanaugh's
- 3 Green Room (Hotel DuPont)
- 4 Tonic Bar and Grill
- 5 Mikimotos
- 6 Washington Ale House
- 7 Dunkin Donuts
- 8 Starbucks
- 9 Chelsea Tavern
- 10 Pure Bread Deli
- 11 Qdoba
- 12 Libby's
- 13 Ernest & Scott Taproom
- 14 Rodney Street Grill
- 15 Subway
- 16 The Nomad Bar

Map Services

- 1 Downtown Cleaners
- 2 Bank of America
- 3 PNC Bank
- 4 TD Commerce Bank
- 5 Tri State Couriers
- 6 U.S. Postal Service
- 7 Wells Fargo
- 8 Wilmington Trust
- 9 WSFS

Map Government

- 1 Carvel State Building
- 2 City County Building
- 3 Court of Bankruptcy
- 4 Court of Chancery
- 5 Federal Building
- 6 New Castle County Courthouse
- 7 Wilmington Public Library

Map Miscellaneous Locations

- 1 Brandywine Creek Walk
- 2 Wilmington Hospital
- 3 Wilmington Convention Center
- 4 The Residences at Rodney Square
- 5 YMCA Fitness Center

Map Hotels

- 1 Luxia Suites
- 2 Doubletree
- 3 Marriot Courtyard
- 4 Sheraton Suites

