



5,850 SF Office

Building Available

**FOR SALE | 1101 ST PETERS HOWELL RD, ST. PETERS | MO**

FEATURES

- 5,850 SF building (500 SF warehouse) on 0.84 AC lot
- Predominately brick & stone building constructed in 2003
- High quality office finish with several offices, support staff area, conference room & reception area
- Great access from I-70 & Hwy 94/Page 364
- Close proximity to Mid Rivers Mall and other amenities
- Zoned "C-2" Community Commercial
- 2016 real estate taxes: \$17,852

Sale Price

\$731,500

**Chad Burkemper**

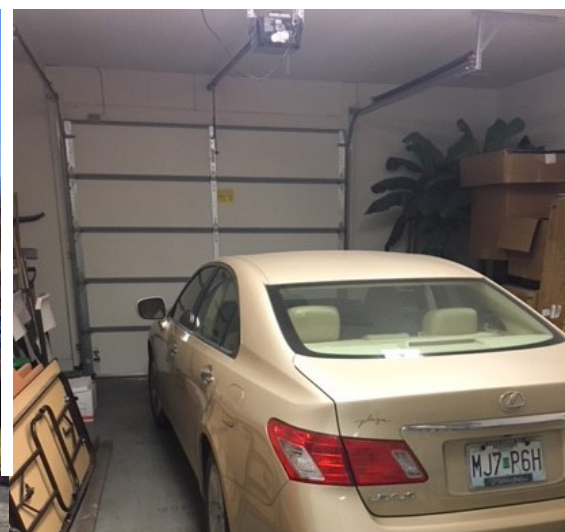
636 579 9020 mobile  
314 584 6279 direct  
chad.burkemper@colliers.com

**Colliers International**

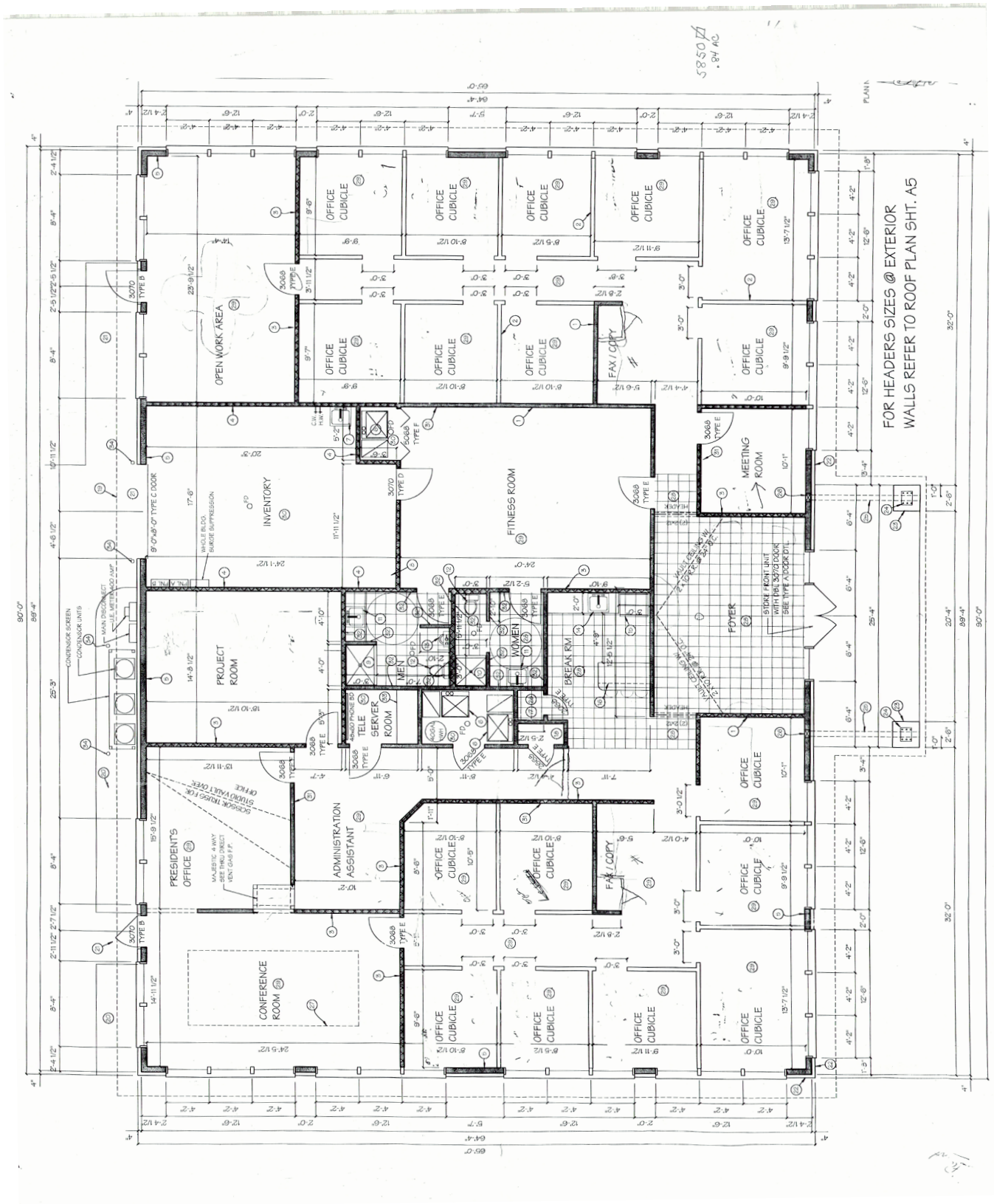
101 S Hanley Rd, Ste 1400  
St. Louis, MO 63105  
314 863 4447  
colliers.com/stlouis



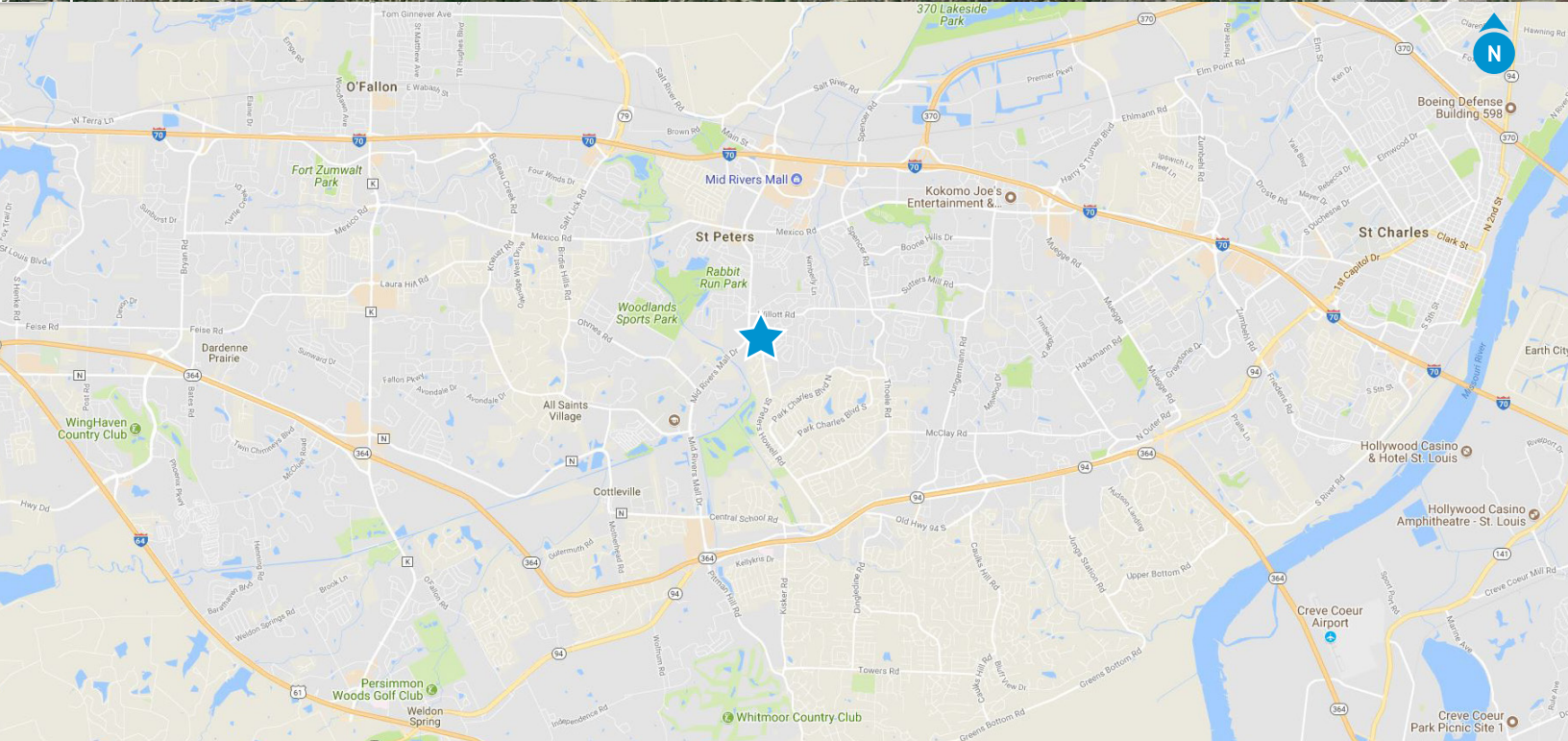
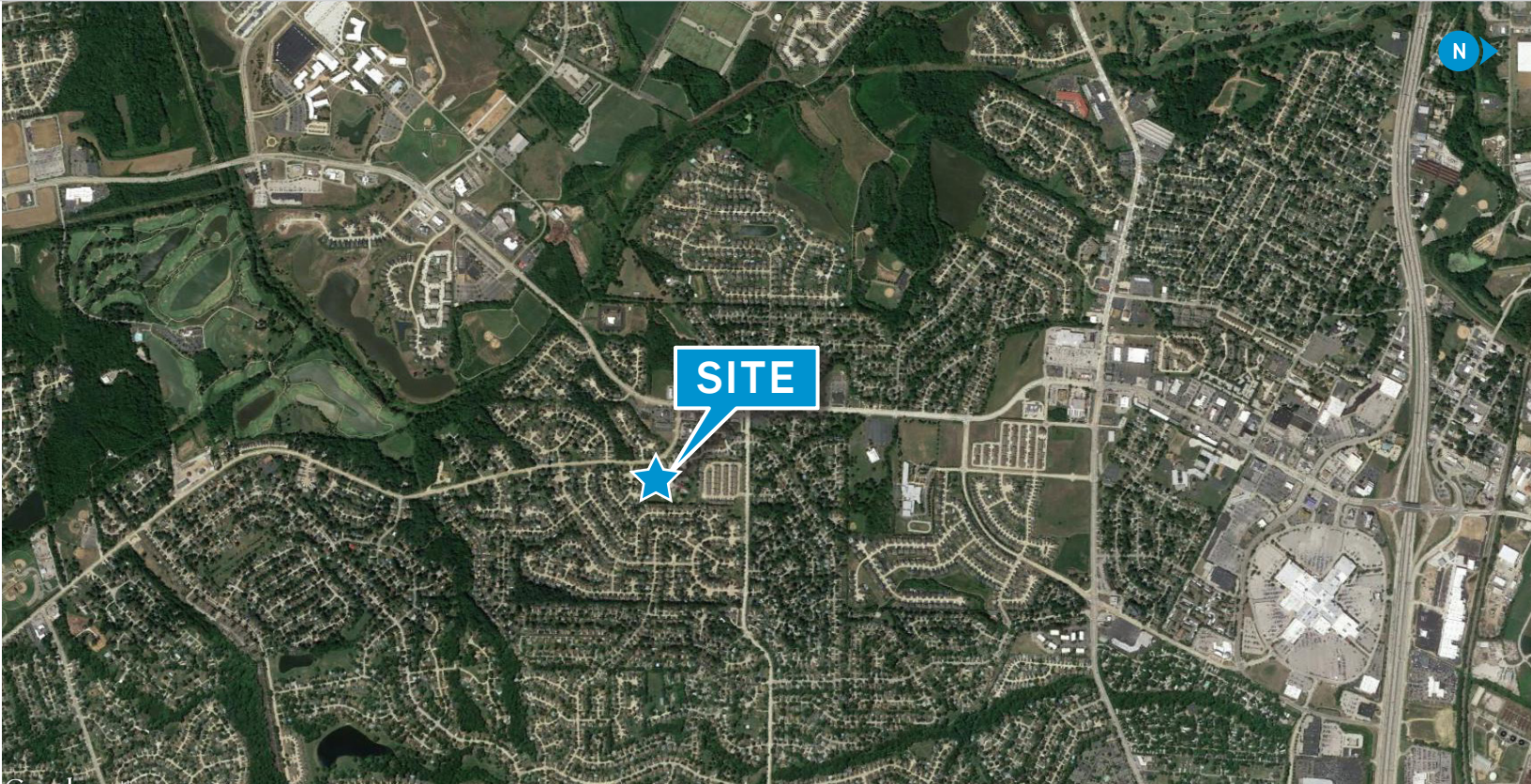
Accelerating success.











## FOR SALE | 1101 ST PETERS HOWELL RD, ST. PETERS | MO

Contact us:

**Chad Burkemper**

636 579 9020 mobile

314 584 6279 direct

chad.burkemper@colliers.com

**Colliers International**

101 S Hanley Rd, Ste 1400

St. Louis, MO 63105

314 863 4447

colliers.com/stlouis



Accelerating success.