

**FOR
SALE**

4410 S Airport Rd

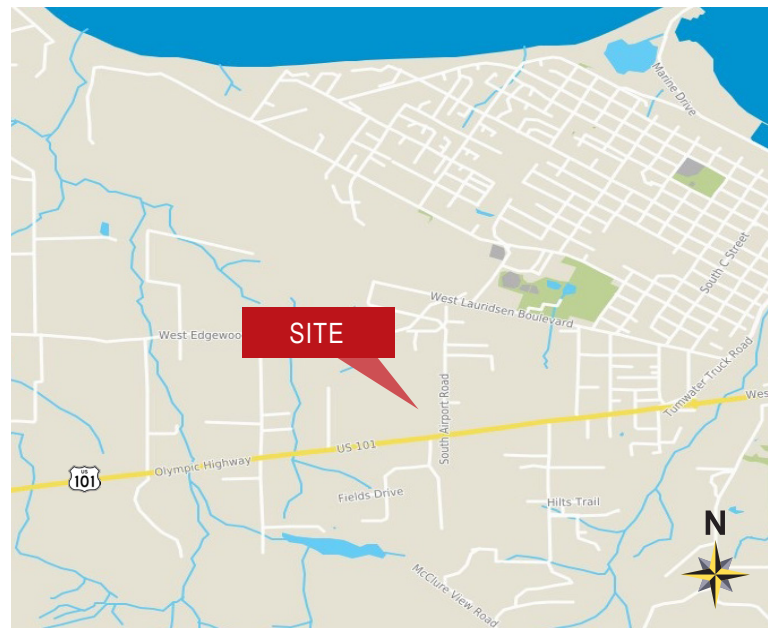
Port Angeles, WA

Colliers
INTERNATIONAL



FEATURES

- ❖ 15 Acres
- ❖ Zoned Heavy Industrial
- ❖ Site has been cleared and filled
- ❖ City sewer and water
- ❖ Ready to build on; Seller can build-to-suit
- ❖ Great SR 101 visibility and access
- ❖ **Sale price: \$1,300,000 = \$1.99/SF**



CONTACT

Arvin Vander Veen, SIOR
+1 206 654 0521
arvin.vanderveen@colliers.com

COLLIERS INTERNATIONAL
+1 206 223 0866
www.colliers.com/seattle

Colliers
INTERNATIONAL