



Colliers



FOR LEASE

523 Orange Street

Hot Springs, Arkansas

Hot Springs Professional Office Space

Features

- Building size: 5,120 SF
- Available suite: 2,560 SF
- Lease rate: \$12.50/SF
- Ground floor, multi-office suite including conference room and breakroom
- Off-street parking
- Near Garland County Courthouse
- Zoned: CN-Neighborhood Commercial
- Situated in walking distance from neighboring restaurants and downtown Hot Springs

This document/email has been prepared by Colliers for advertising and general information only. Colliers makes no guarantees, representations or warranties of any kind, expressed or implied, regarding the information including, but not limited to, warranties of content, accuracy and reliability. Any interested party should undertake their own inquiries as to the accuracy of the information. Colliers excludes unequivocally all inferred or implied terms, conditions and warranties arising out of this document and excludes all liability for loss and damages arising there from. This publication is the copyrighted property of Colliers and /or its licensor(s). © 2025. All rights reserved. This communication is not intended to cause or induce breach of an existing listing agreement. Colliers International Group Inc.

Lease Rate:

\$12.50

Per SF

CONTACT US

Brian Gehrki

+1 501 258 5500

brian.gehrki@ar.colliers.com

Colliers | Hot Springs

835 Central Ave, Ste. 200

Hot Springs, AR 71901

P: +1 501 623 2200

FOR LEASE

Property Photos



CONTACT US

Brian Gehrki
+1 501 258 5500
brian.gehrki@ar.colliers.com



Colliers | Hot Springs
835 Central Ave, Ste. 200
Hot Springs, AR 71901
P: +1 501 623 2200

This document/email has been prepared by Colliers for advertising and general information only. Colliers makes no guarantees, representations or warranties of any kind, expressed or implied, regarding the information including, but not limited to, warranties of content, accuracy and reliability. Any interested party should undertake their own inquiries as to the accuracy of the information. Colliers excludes unequivocally all inferred or implied terms, conditions and warranties arising out of this document and excludes all liability for loss and damages arising there from. This publication is the copyrighted property of Colliers and /or its licensor(s). © 2025. All rights reserved. This communication is not intended to cause or induce breach of an existing listing agreement. Colliers International Group Inc.

FOR LEASE

Neighborhood Map

Area Demographics



Estimated Population (2025)

1 Mile	3 Mile	5 Mile
6,333	25,783	47,026



Estimated Households (2025)

1 Mile	3 Mile	5 Mile
2,984	11,454	21,068



Est. Avg Household Income (2025)

1 Mile	3 Mile	5 Mile
\$41,521	\$57,535	\$71,126



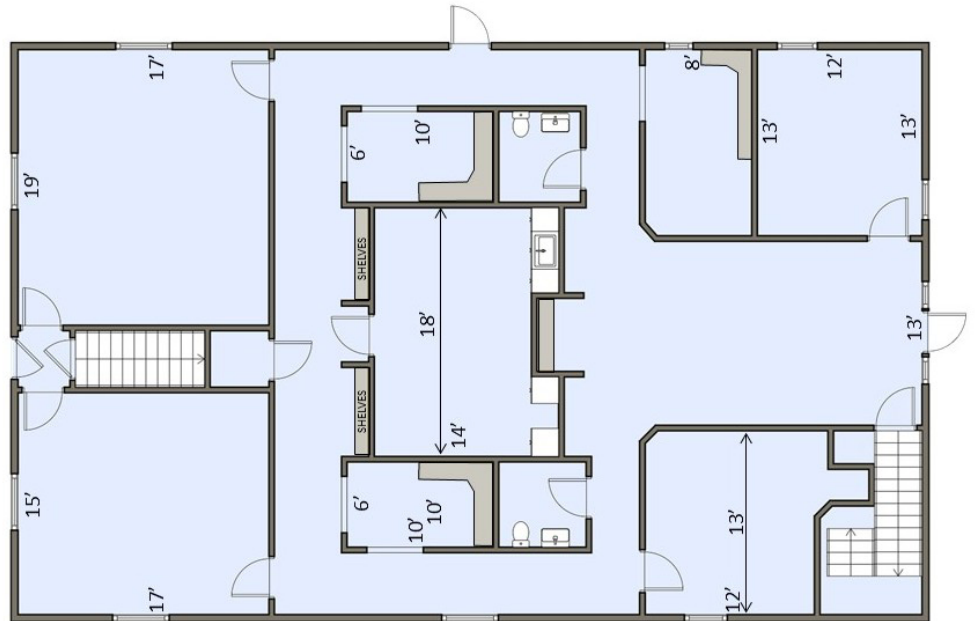
CONTACT US

Floor Plan

Brian Gehrki

+1 501 258 5500

brian.gehrki@ar.colliers.com



Colliers | Hot Springs

835 Central Ave, Ste. 200

Hot Springs, AR 71901

P: +1 501 623 2200

This document/email has been prepared by Colliers for advertising and general information only. Colliers makes no guarantees, representations or warranties of any kind, expressed or implied, regarding the information including, but not limited to, warranties of content, accuracy and reliability. Any interested party should undertake their own inquiries as to the accuracy of the information. Colliers excludes unequivocally all inferred or implied terms, conditions and warranties arising out of this document and excludes all liability for loss and damages arising there from. This publication is the copyrighted property of Colliers and /or its licensor(s). © 2025. All rights reserved. This communication is not intended to cause or induce breach of an existing listing agreement. Colliers International Group Inc.