

# ±89,600 SF Available 7400 W. Buckeye Road

FOR LEASE > PHOENIX, AZ



## Contact Us

PAYSON MACWILLIAM  
602 222 5060  
PHOENIX, AZ  
[payson.macwilliam@colliers.com](mailto:payson.macwilliam@colliers.com)

DON MACWILLIAM  
602 222 5059  
PHOENIX, AZ  
[don.macwilliam@colliers.com](mailto:don.macwilliam@colliers.com)

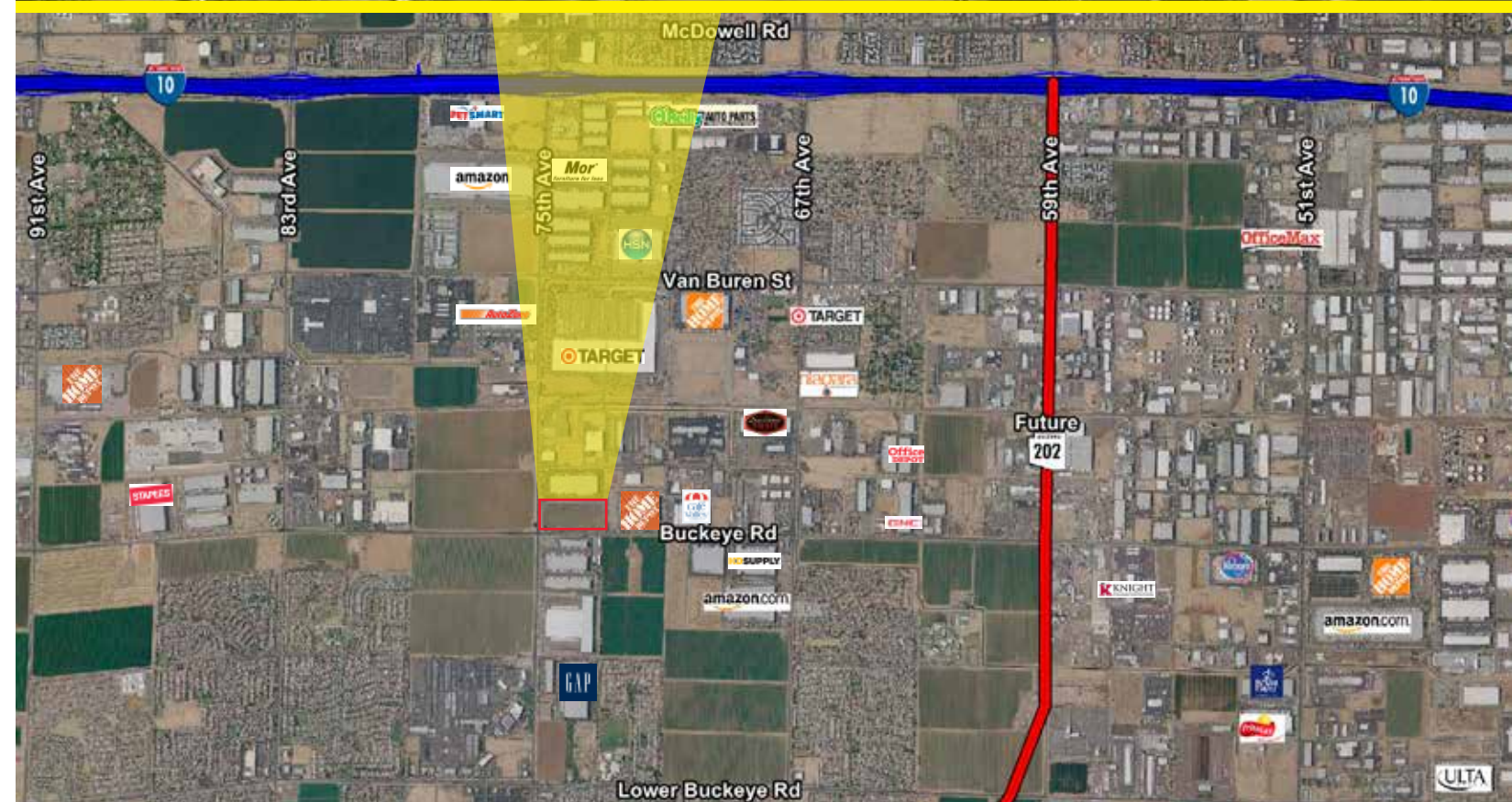
COLLIERS INTERNATIONAL  
2390 E. Camelback Rd, Suite 100  
Phoenix, AZ 85016  
[www.colliers.com/arizona](http://www.colliers.com/arizona)



This document/email has been prepared by Colliers International for advertising and general information only. Colliers International makes no guarantees, representations or warranties of any kind, expressed or implied, regarding the information including, but not limited to, warranties of content, accuracy and reliability. Any interested party should undertake their own inquiries as to the accuracy of the information. Colliers International excludes unequivocally all inferred or implied terms, conditions and warranties arising out of this document and excludes all liability for loss and damages arising there from. This publication is the copyrighted property of Colliers International and/or its licensor(s). © 2019. All rights reserved.

# ±89,600 SF Available 7400 W. Buckeye Road

FOR LEASE > PHOENIX, AZ



PAYSON MACWILLIAM  
602 222 5059  
PHOENIX, AZ  
[payson.macwilliam@colliers.com](mailto:payson.macwilliam@colliers.com)

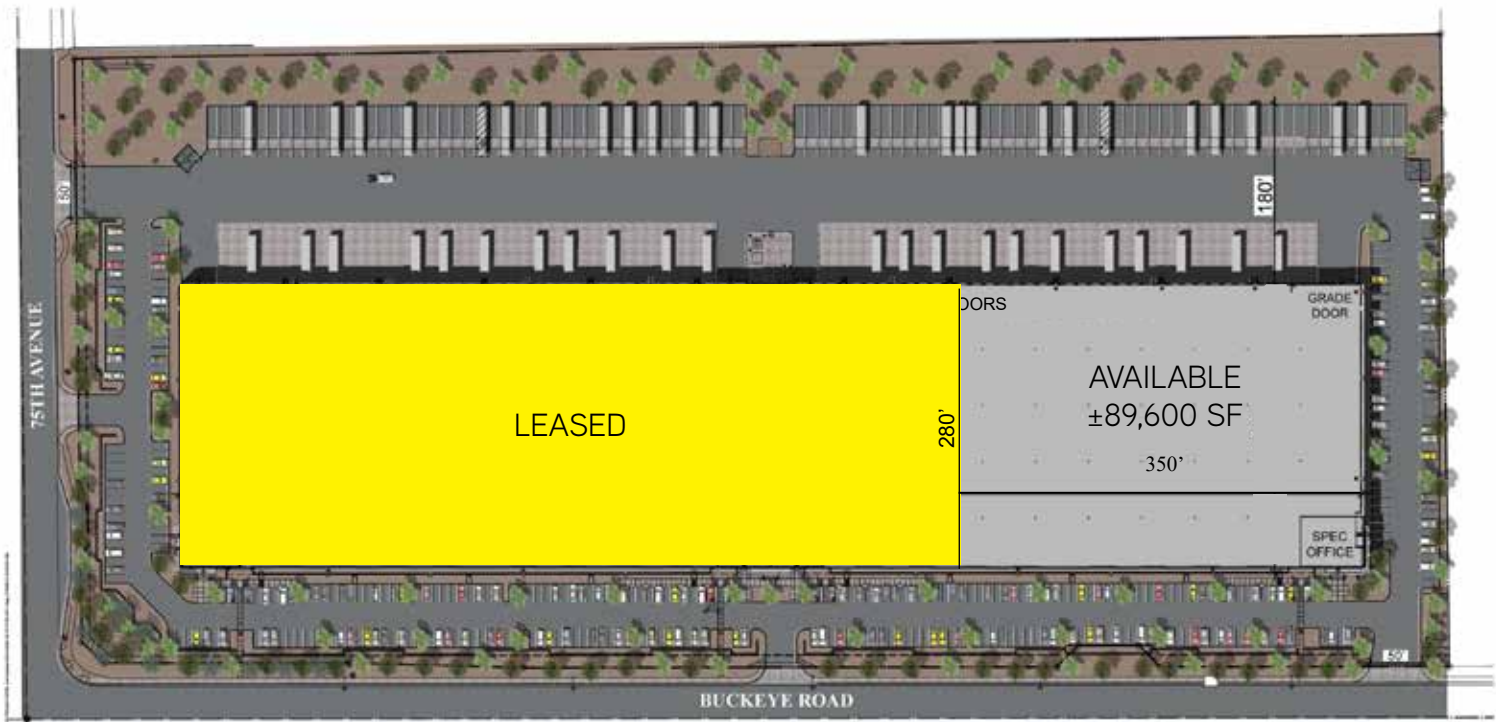
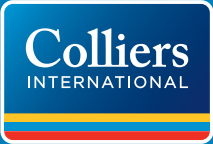
DON MACWILLIAM  
602 222 5059  
PHOENIX, AZ  
[don.macwilliam@colliers.com](mailto:don.macwilliam@colliers.com)

COLLIERS INTERNATIONAL  
2390 E. Camelback Rd, Suite 100  
Phoenix, AZ 85016  
[www.colliers.com/arizona](http://www.colliers.com/arizona)



±89,600 SF Available  
7400 W. Buckeye Road

FOR LEASE > PHOENIX, AZ



Building Features

Building Size:	±325,800 SF	Dock Doors:	19 (north facing)
Available Space:	±89,600 SF	Grade Level Doors:	1
Clear Height:	32'	Lot Size:	±814,119 SF lot (18.69 acres)
Fire Sprinkler System:	ESFR	Zoning:	A-1, City of Phoenix
Power:	3,600 Amps 277/480v (expandable to 7,200 Amps)	Configuration:	Rear loaded
		Divisible:	No

Additional Features

Building Dimensions:	280' x 1160'	Floor Slab:	6" reinforced; 4,000 psi
Column Spacing:	55' x 52'	Skylights:	Yes
Truck Court Maneuverability:	180'	Electric:	SRP
Trailer Parking:	92	Water & Sewer:	City of Phoenix
Automobile Parking:	359	Tax District:	Fowler

PAYSON MACWILLIAM  
602 222 5060  
PHOENIX, AZ  
payson.macwilliam@colliers.com

DON MACWILLIAM  
602 222 5059  
PHOENIX, AZ  
don.macwilliam@colliers.com

COLLIERS INTERNATIONAL  
2390 E. Camelback Rd, Suite 100  
Phoenix, AZ 85016  
www.colliers.com/arizona