

FOR SALE OR LEASE



15836 W. Eddie Albert Way

GOODYEAR, ARIZONA



Features

- › Heavy power
- › ±33.9 acre site
- › Zoning: I-2, Goodyear
- › ±3 miles to I-10

Sale Price

- › \$9,000,000 (\$60.48/SF)

Lease Rate

- › \$.25/SF NNN

Available

- › Total project size: ±148,510 SF on ±34 acres

Building 1:

- › ±48,378 SF
- › ±17' clear height
- › Manufacturing facility; Power: 1,400 amps
- › 6 dock high doors

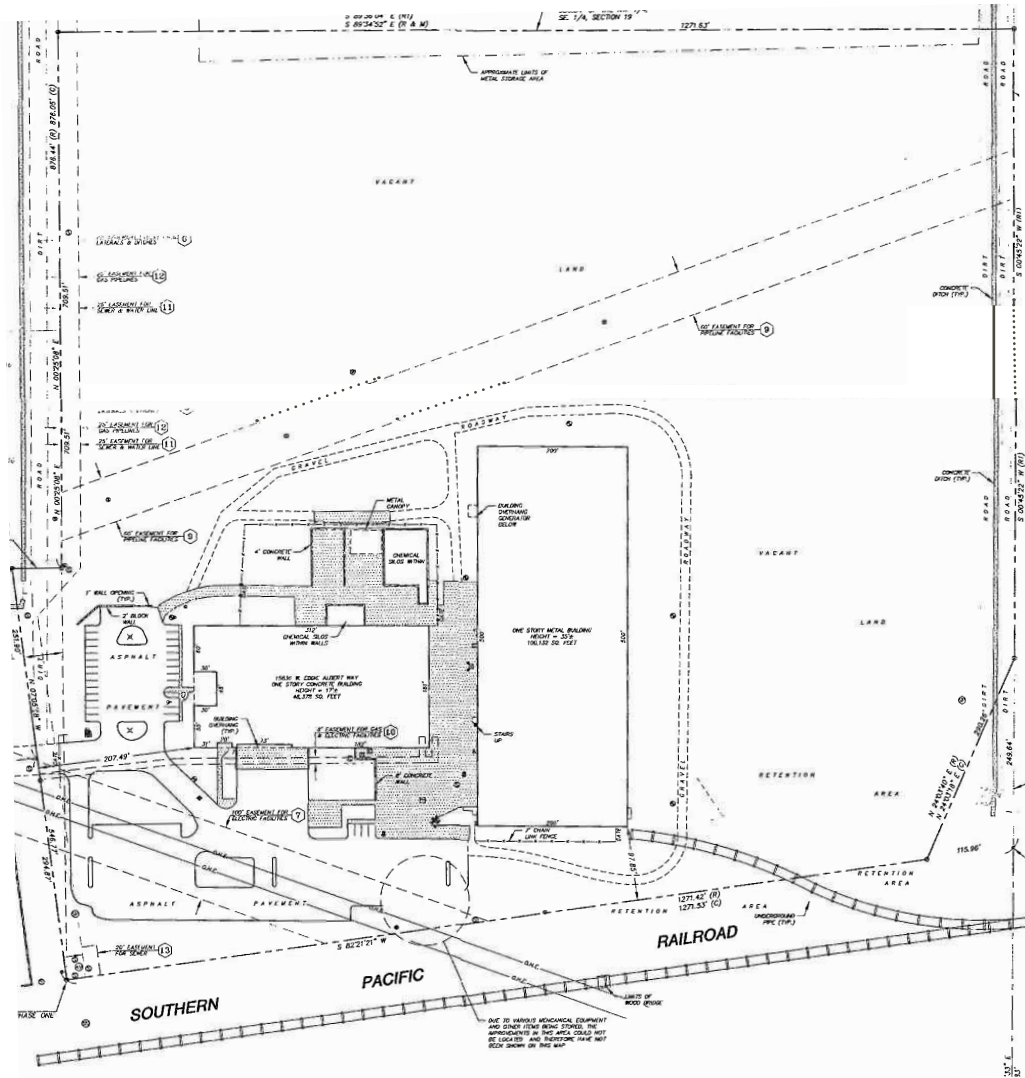
Building 2:

- › ±100,132 SF
- › ±35' clear height
- › Distribution facility; Power: 3,000 amps
- › Potential rail spur on site
- › 4 dock high doors

ROB MARTENSEN, SIOR, CCIM
602 222 5082
rob.martensen@colliers.com

COLLIERS INTERNATIONAL
2390 E. Camelback Rd, Suite 100
Phoenix, AZ 85016
www.colliers.com/greaterphoenix

15836 W. Eddie Albert Way > Site Plan



Contact Us

ROB MARTENSEN, SIOR, CCIM
Executive Vice President
602 222 5082
rob.martensen@colliers.com

COLLIERS INTERNATIONAL
2390 E. Camelback Rd, Suite 100
Phoenix, AZ 85016
www.colliers.com/greaterphoenix

This document/email has been prepared by Colliers International for advertising and general information only. Colliers International makes no guarantees, representations or warranties of any kind, expressed or implied, regarding the information including, but not limited to, warranties of content, accuracy and reliability. Any interested party should undertake their own inquiries as to the accuracy of the information. Colliers International excludes unequivocally all inferred or implied terms, conditions and warranties arising out of this document and excludes all liability for loss and damages arising there from. This publication is the copyrighted property of Colliers International and /or its licensor(s). © 2018. All rights reserved.

