

FOR SALE > OFFICE



844 N. Van Ness Avenue

FRESNO, CALIFORNIA



Tower District Area Building Fresno, California

Property Features

- > On the Fresno Historical Registry (Fathy Home)
- > Tower District Area
- > Zoned for office uses
- > Open areas and several offices
- > Near Freeway 41 and Highway 180
- > Designed by Lawrence Karekin Condrajian (L.K. Con Architect)
- > Has Basement, not included in square footage

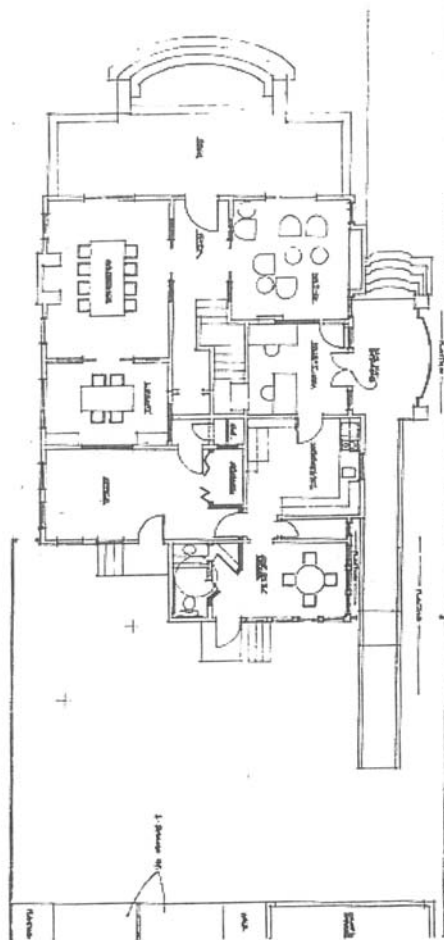


AGENT: BEAU PLUMLEE
559 221 1271 | EXT. 111
FRESNO, CA
beau.plumlee@colliers.com
BRE #01269167

COLLIERS INTERNATIONAL
7485 N. Palm Avenue, #110
Fresno, CA 93711
www.colliers.com/fresno

Property Summary

Location:	On N. Van Ness Avenue between Olive and Belmont Avenues.
Size:	Approximately 2,699 SF
Acres:	Approximately 0.16 acres
Zoning:	CMS/AH - Commercial Main Street, City of Fresno
APN:	452-202-17
Year Built:	1925
Price:	\$330,000
Comments:	This two story building was readapted to office space and is currently being used as a law office. Construction includes leaded glass windows, beveled interior glass pocket doors, Australian gumwood and paneling throughout the building.

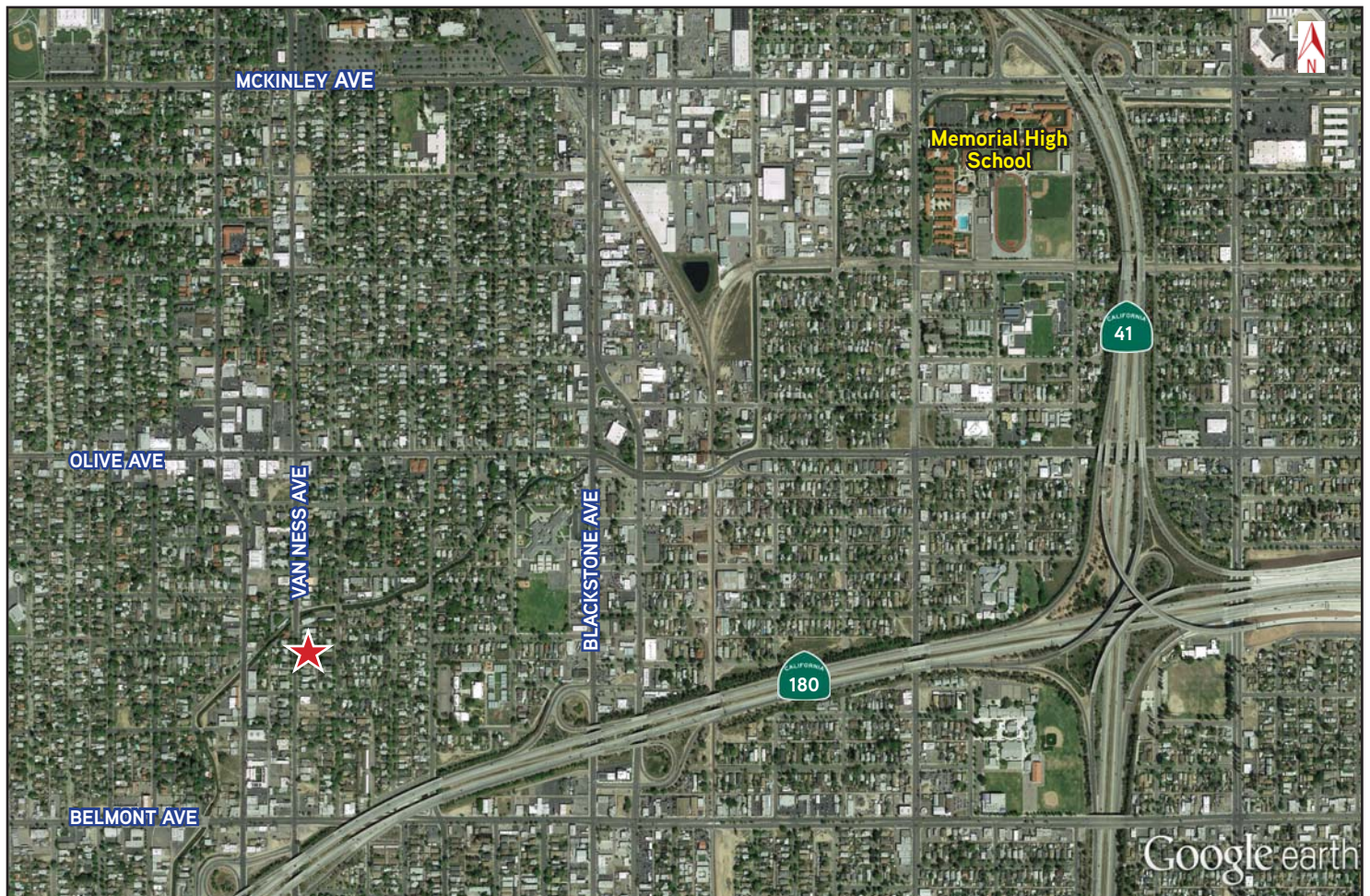
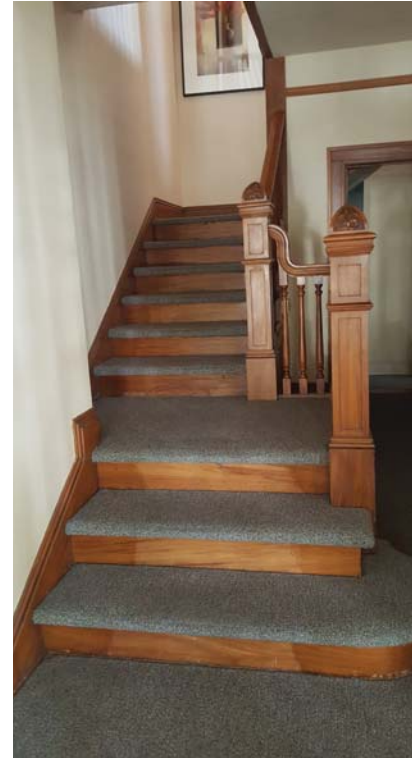
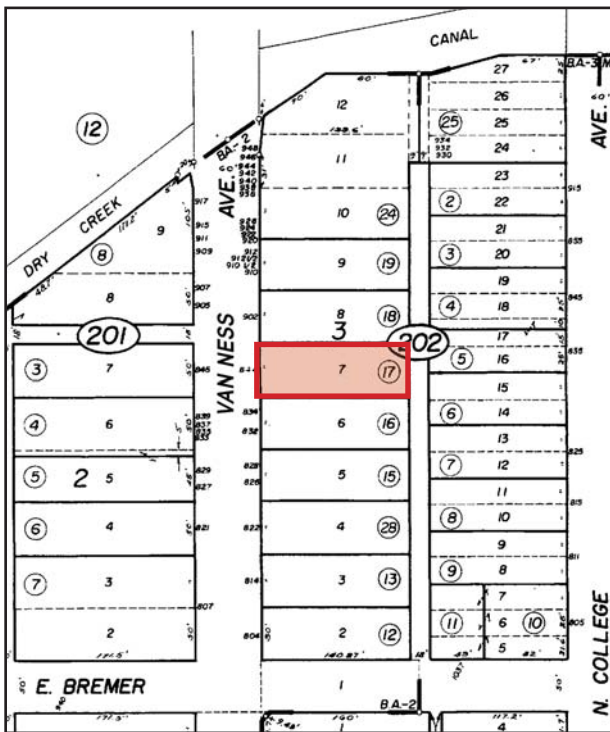


First Floor



Second Floor

844 N. Van Ness Avenue | Fresno, CA



This document has been prepared by Colliers International for advertising and general information only. Colliers International makes no guarantees, representations or warranties of any kind, expressed or implied, regarding the information including, but not limited to, warranties of content, accuracy and reliability. Any interested party should undertake their own inquiries as to the accuracy of the information. Colliers International excludes unequivocally all inferred or implied terms, conditions and warranties arising out of this document and excludes all liability for loss and damages arising there from. This publication is the copyrighted property of Colliers International and/or its licensor(s). ©2017. All rights reserved.

