

FOR LEASE > OFFICE SPACE



# Kirkland 405 Corporate Center

BUILDINGS A-1 & A-2 11332-11410 NE 122ND WAY, KIRKLAND, WA 98034



## Available Space

### BUILDING A-1 (11410 NE 122nd Way)

- > Suite 103: 2,214 RSF  
- available now

### BUILDING A-2 (11332 NE 122nd Way)

- > Suite 100: 3,627 RSF  
- available 2/1/2018

## Lease Rates

- > \$22.00/SF, NNN

## Features

- > High quality image, Class A, three-story buildings with direct access to I-405
- > Covered and surface parking
- > Generous tenant improvement package
- > Building signage available
- > Locker rooms and showers in both buildings
- > On-site bike parking

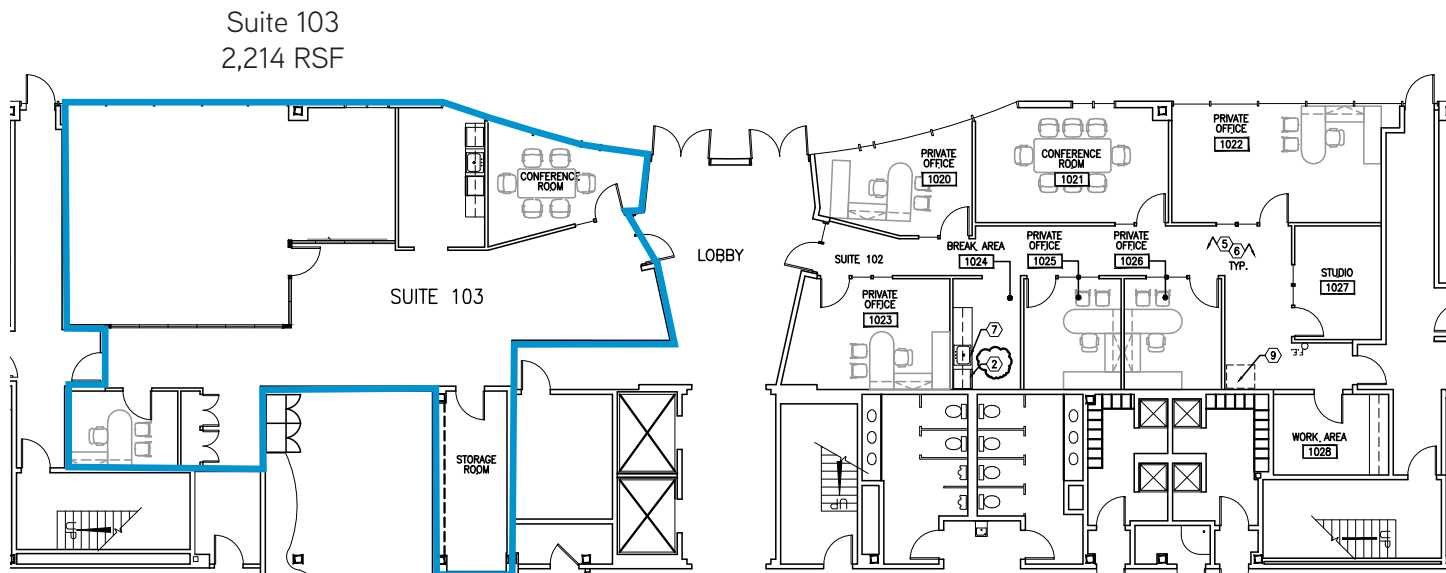
GREGG RIVA  
425 453 3132  
BELLEVUE, WA  
gregg.riva@colliers.com

DEREK HEED  
425 453 3133  
BELLEVUE, WA  
derek.heed@colliers.com

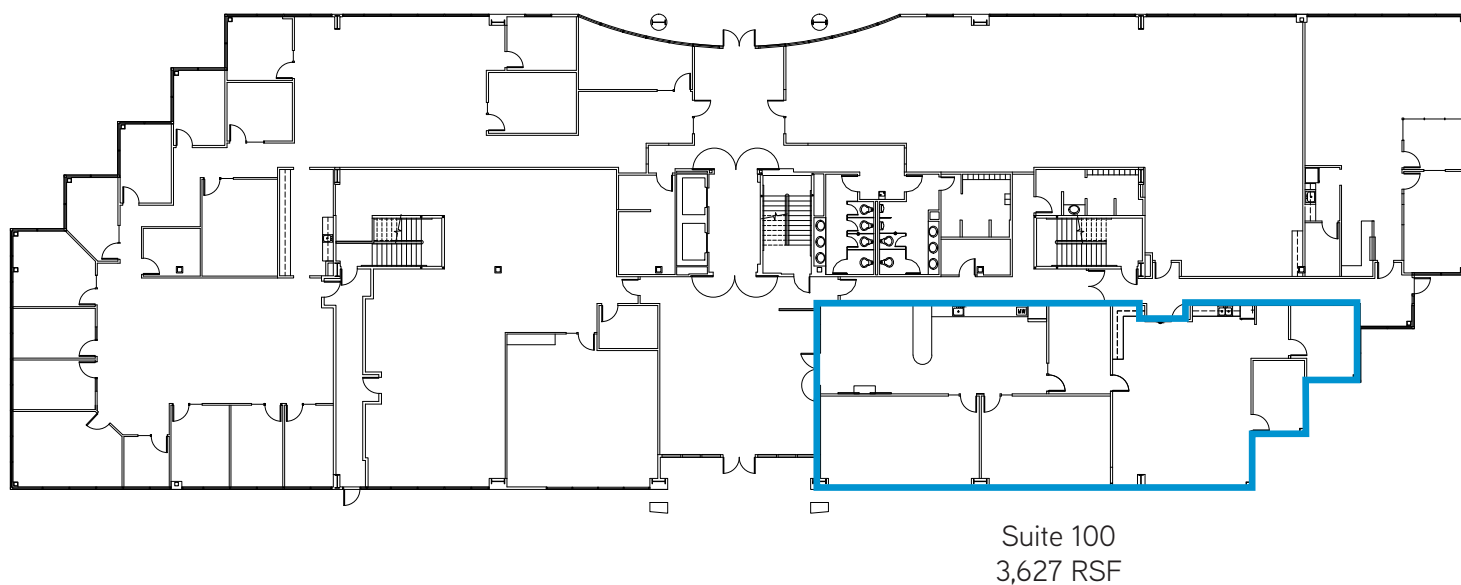
COLLIERS INTERNATIONAL  
11225 SE 6th Street, Suite 240  
Bellevue, WA 98004  
www.colliers.com

## Kirkland 405 Corporate Center > Floor Plans

### > Building A-1: First Floor



### > Building A-1: First Floor



GREGG RIVA  
425 453 3132  
BELLEVUE, WA  
[gregg.riva@colliers.com](mailto:gregg.riva@colliers.com)

DEREK HEED  
425 453 3133  
BELLEVUE, WA  
[derek.heed@colliers.com](mailto:derek.heed@colliers.com)

COLLIERS INTERNATIONAL  
11225 SE 6th Street, Suite 240  
Bellevue, WA 98004  
[www.colliers.com](http://www.colliers.com)



## Kirkland 405 Corporate Center > Location Map



GREGG RIVA  
425 453 3132  
BELLEVUE, WA  
[gregg.riva@colliers.com](mailto:gregg.riva@colliers.com)

DEREK HEED  
425 453 3133  
BELLEVUE, WA  
[derek.heed@colliers.com](mailto:derek.heed@colliers.com)

COLLIERS INTERNATIONAL  
11225 SE 6th Street, Suite 240  
Bellevue, WA 98004  
[www.colliers.com](http://www.colliers.com)