

FOR LEASE > INDUSTRIAL BUILDING

Westroads Distribution Center - Building C

14357 W 100TH STREET LENEXA, KANSAS



PROPERTY FEATURES

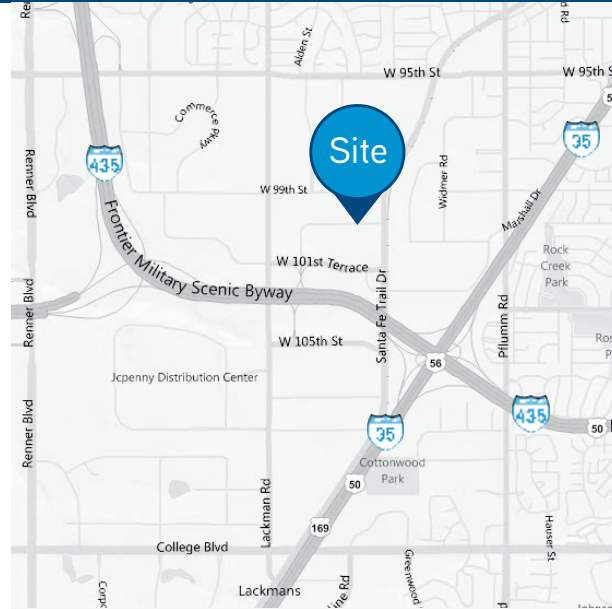
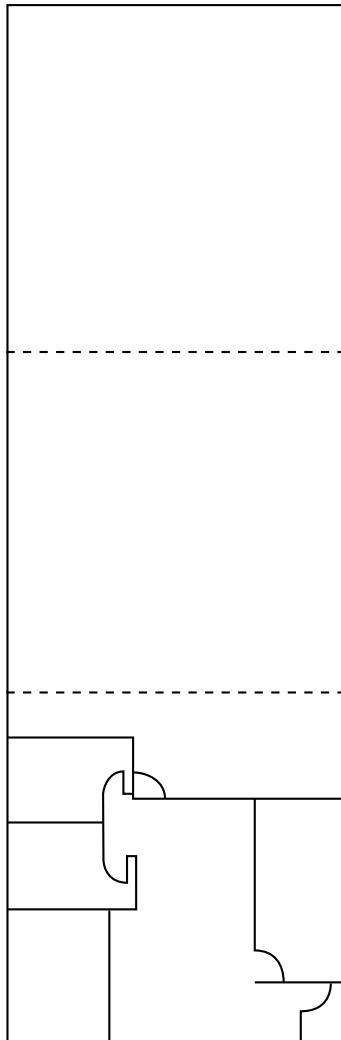
- > **TOTAL BUILDING:** 58,573 SF
- > **TOTAL AVAILABLE:** 4,863 SF
 - > Office: 1,300± SF
- > **LOADING:** 1 dock-high loading door
- > **CLEAR HEIGHT:** 16'8"-18'6"
- > **SPRINKLER SYSTEM:** wet
- > **ACCESS:** Convenient access to I-435 and I-35
- > **LEASE RATE:** \$7.50/SF gross

TOM HAVERTY
+1 816 556 1105
KANSAS CITY, MO
tom.haverty@colliers.com

JOHN STAFFORD SIOR, CCIM
+1 816 556 1184
KANSAS CITY, MO
john.stafford@colliers.com

COLLIERS INTERNATIONAL
4520 Main Street, Suite 1000
Kansas City, MO 64111
www.colliers.com

14357 W 100th Street



Contact Us

TOM HAVERTY
+1 816 556 1105
KANSAS CITY, MO
tom.haverty@colliers.com

JOHN STAFFORD SIOR, CCIM
+1 816 556 1184
KANSAS CITY, MO
john.stafford@colliers.com

COLLIERS INTERNATIONAL
4520 Main Street, Suite 1000
Kansas City, MO 64111
www.colliers.com

