

**FOR
LEASE**

212 12TH AVENUE ROAD

12TH AVE RD & WASHINGTON AVE | NAMPA, ID



PROPERTY INFORMATION

Property Type:	Office
Building Size:	13,939
Land Size:	0.32 Acres

SPACE AVAILABLE

Suite	Size	Rate
212	1,403 SF	\$13.00 PSF MG

HIGHLIGHTS

- » Excellent visibility on 12th Ave Rd
- » Reception area, multiple private offices, conference room, and 2 restrooms
- » Monument signage
- » Quality interior finishes and on-site parking
- » Available May 2018

Colliers
INTERNATIONAL

LINCOLN HAGOOD
208 472 1667
lincoln.hagood@colliers.com

BRYANT JONES
208 472 1663
bryant.jones@colliers.com

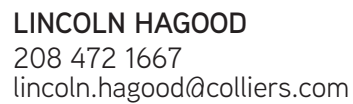
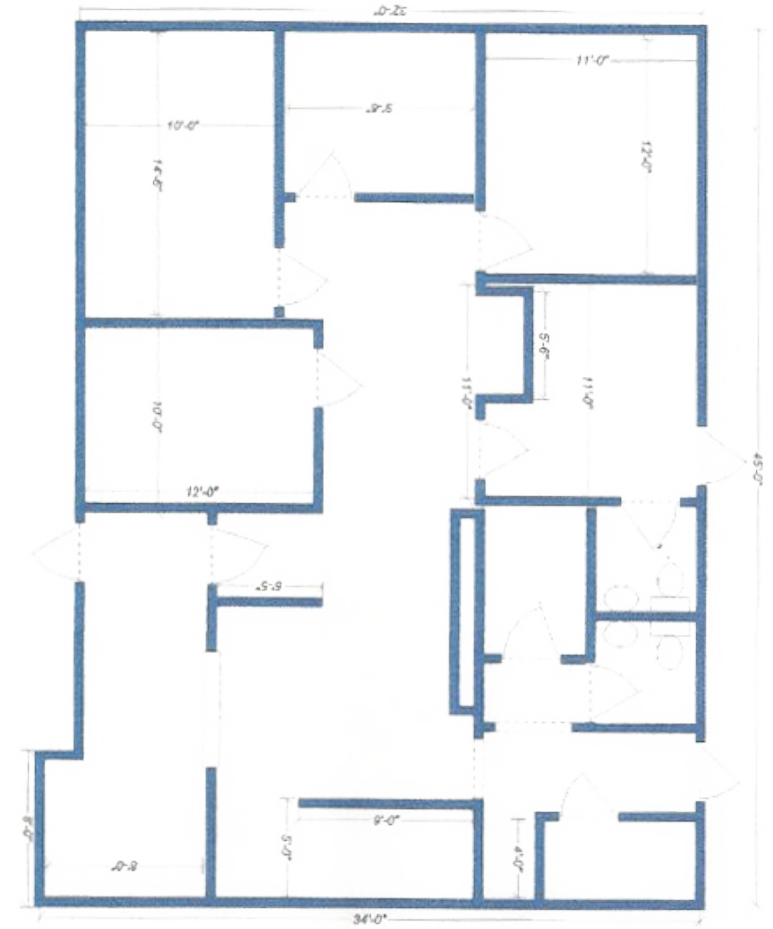
MIKE PEÑA
208 472 1666
mike.pena@colliers.com

V021318

Colliers International Idaho | 755 West Front Street, Suite 300 Boise, Idaho 83702 | www.colliers.com/boise | 208 345 9000

This document has been prepared by Colliers International for advertising and general information only. Colliers International makes no guarantees, representations or warranties of any kind, expressed or implied, regarding the information including, but not limited to, warranties of content, accuracy and reliability. Any interested party should undertake their own inquiries as to the accuracy of the information. Colliers International excludes unequivocally all inferred or implied terms, conditions and warranties arising out of this document and excludes all liability for loss and damages arising there from. This publication is the copyrighted property of Colliers International and/or its licensor(s). ©2016. All rights reserved

212 12TH AVENUE ROAD
12TH AVE RD & WASHINGTON AVE | NAMPA, ID



BRYANT JONES
208 472 1663
bryant.jones@colliers.com

MIKE PEÑA
208 472 1666
mike.pena@colliers.com