

FOR SALE > LAND

Amelia Church Road & Guy Church Road
Clayton, NC 27520



PROPERTY DETAILS

Available Acreage	+2.36
Pricing	\$448,000
Price Per Acre	\$189,830.50
Property Type	Land
Land Use	Commercial
Zoning	B-2
Parcel ID	165801-19-0202 165801-19-03
County	Johnston
Utilities	Power Gas Water Sewer

PROPERTY HIGHLIGHTS

- > Prime site at signaled intersection with approved plans to construct a 12,250 SF building.
- > Site improvement include: site plan approval, turn lanes, all utilities in place, sidewalks, and two approved driveway access points.
- > Within a 1.5 mile radius of the site is \pm 1000 Clayton Middle School, Clayton Elementary, Clayton Community Park, Johnston Medical Center, and limited retail/service space.

FOR SALE > LAND

Amelia Church Road & Guy Church Road
Clayton, NC 27520



AMENITIES MAP



DEMOGRAPHICS

2017	1 MILE	2 MILES	3 MILES
POPULATION	5,057	22,142	46,031
HOUSEHOLDS	2,116	8,670	17,009
AVERAGE HOUSEHOLD INCOME	\$67,971	\$69,696	\$75,015

DAVID BATTEN

Vice President
919 582 3117
david.batten@colliers.com

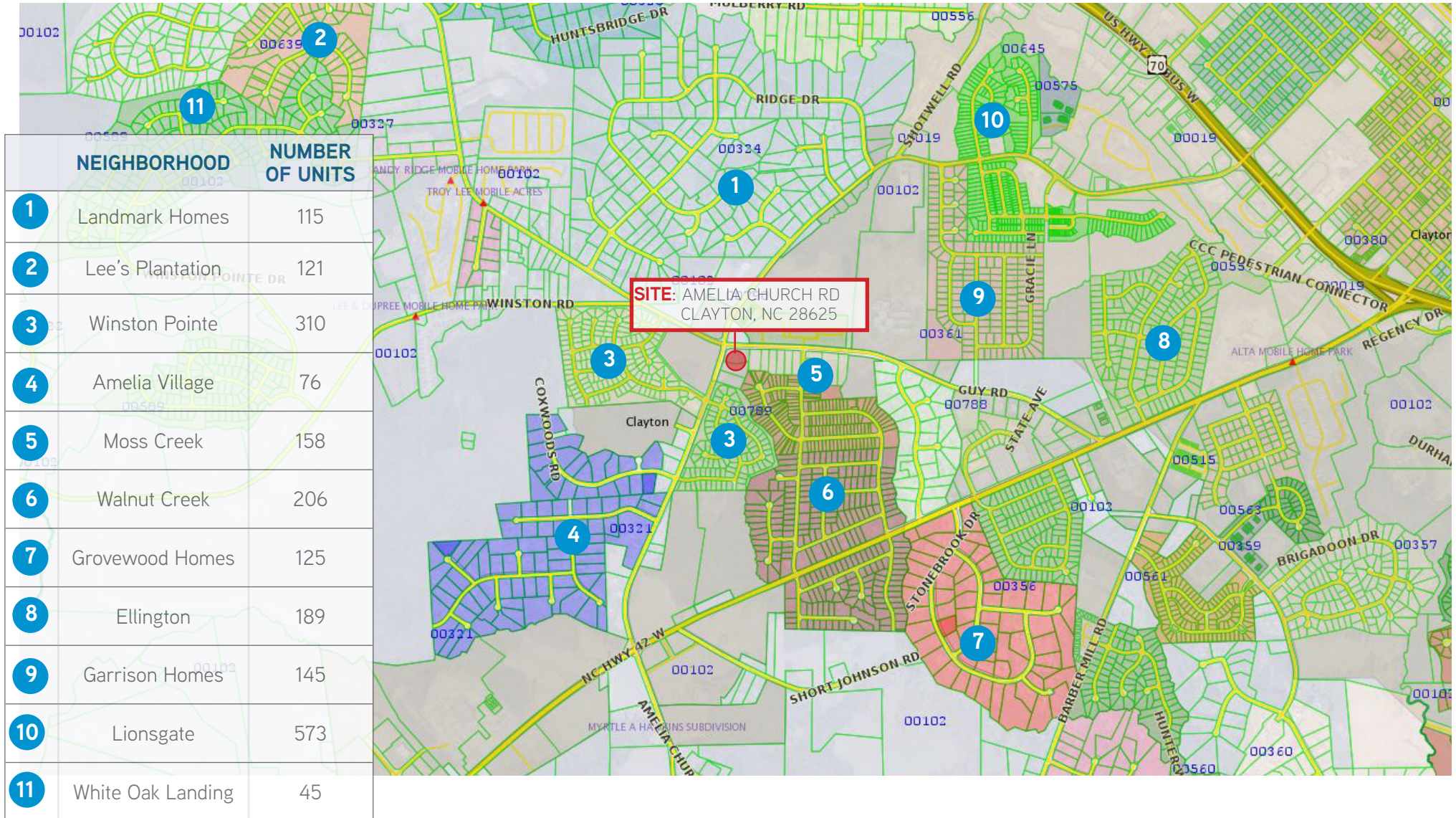
COLLIERS INTERNATIONAL
702 Oberlin Road, Suite 400
Raleigh, NC 27605
www.colliers.com/rdu

FOR SALE > LAND

Amelia Church Road & Guy Church Road
Clayton, NC 27520



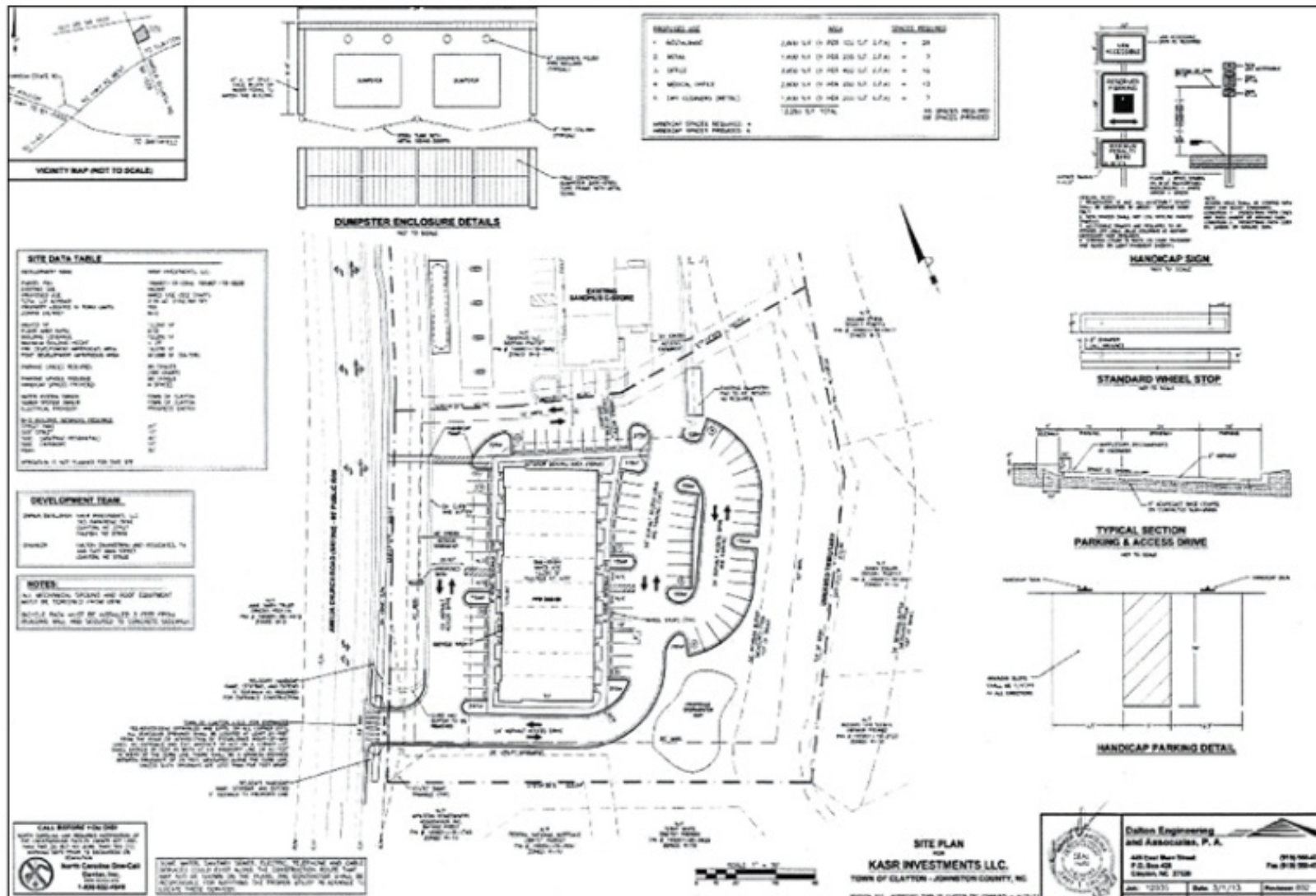
NEIGHBORHOOD MAP



Amelia Church Road & Guy Church Road
Clayton, NC 27520



SITE PLAN



DAVID BATTEN

Vice President
919 582 3117
david.batten@colliers.com

COLLIERS INTERNATIONAL
702 Oberlin Road, Suite 400
Raleigh, NC 27605
www.colliers.com/rdu

DISCLAIMER: No warranty or representation, express or implied, is made to the accuracy of the information contained herein, and same is submitted subject to errors, omissions, change of price, rental or other conditions, withdrawal without notice, and to any special listing conditions imposed by principals.