

FOR SALE OR LEASE > OFFICE

105 Kilmayne Drive
Cary, NC 27540



PROPERTY DETAILS

- > Available Space: Suite D
- > Available SF: $\pm 1,074$ SF
- > Lease Rate: \$15.00/MG
- > Sale Price: \$107,900
- > Second floor space in brick office building with natural lighting

DEMOGRAPHICS

2016 SUMMARY	1 MILE	3 MILES	5 MILES
POPULATION	7,459	42,770	113,858
AVG. HOUSEHOLD INCOME	\$53,994	\$62,096	\$60,877
HOUSEHOLDS	3,093	15,970	40,117



BAXTER M. WALKER, III
Senior Vice President
919 582 3112
baxter.walker@colliers.com

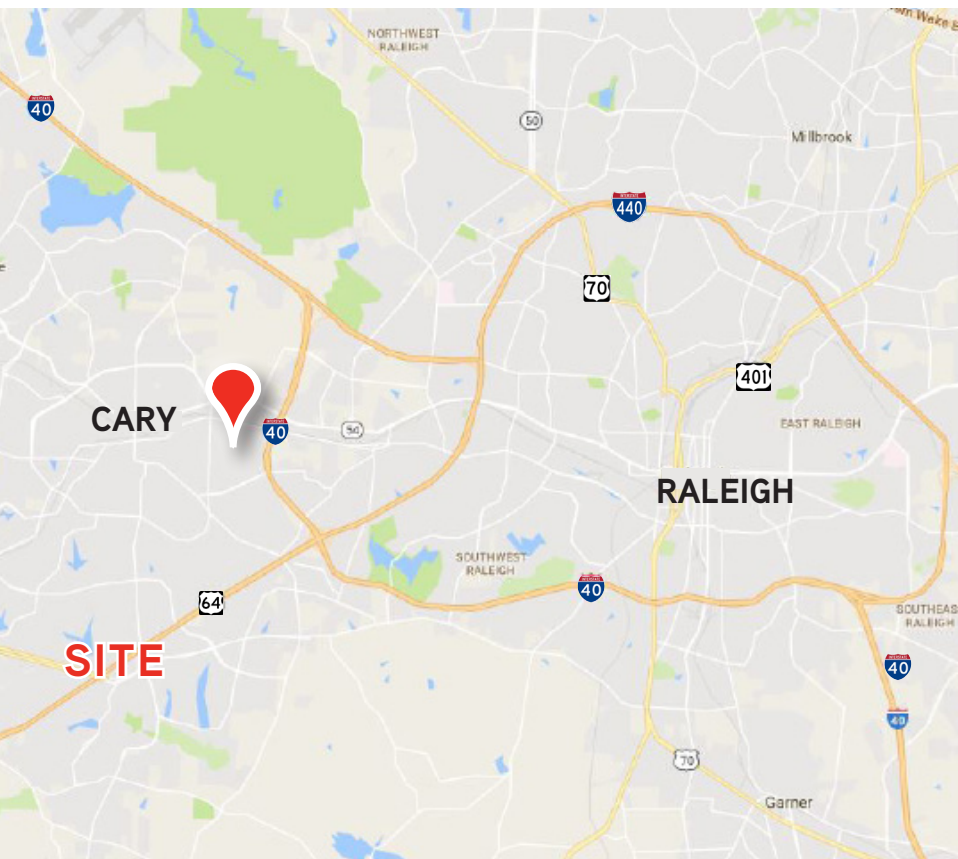
KATHY GIGAC
Director of Leasing
919 582 3130
kathy.gigac@colliers.com

COLLIERS INTERNATIONAL
Raleigh-Durham
702 Oberlin Road, Suite 400
Raleigh, NC 27605
www.colliers.com/rdu

FOR LEASE > OFFICE

105 Kilmayne Drive
Cary, NC 27540

Colliers
INTERNATIONAL



LOCATION

- > + 2.0 Miles from US-64
- > + 2.5 Miles from HWY 40
- > Located near the intersection of Kilmayne and Kildaire Farms Rd
- > Minutes from popular shopping centers; Shoppes of Kildaire and Cary Towne center

BAXTER M. WALKER, III

Senior Vice President

919 582 3112

baxter.walker@colliers.com

KATHY GIGAC

Director of Leasing

919 582 3130

kathy.gigac@colliers.com

COLLIERS INTERNATIONAL

Raleigh-Durham

702 Oberlin Road, Suite 400

Raleigh, NC 27605

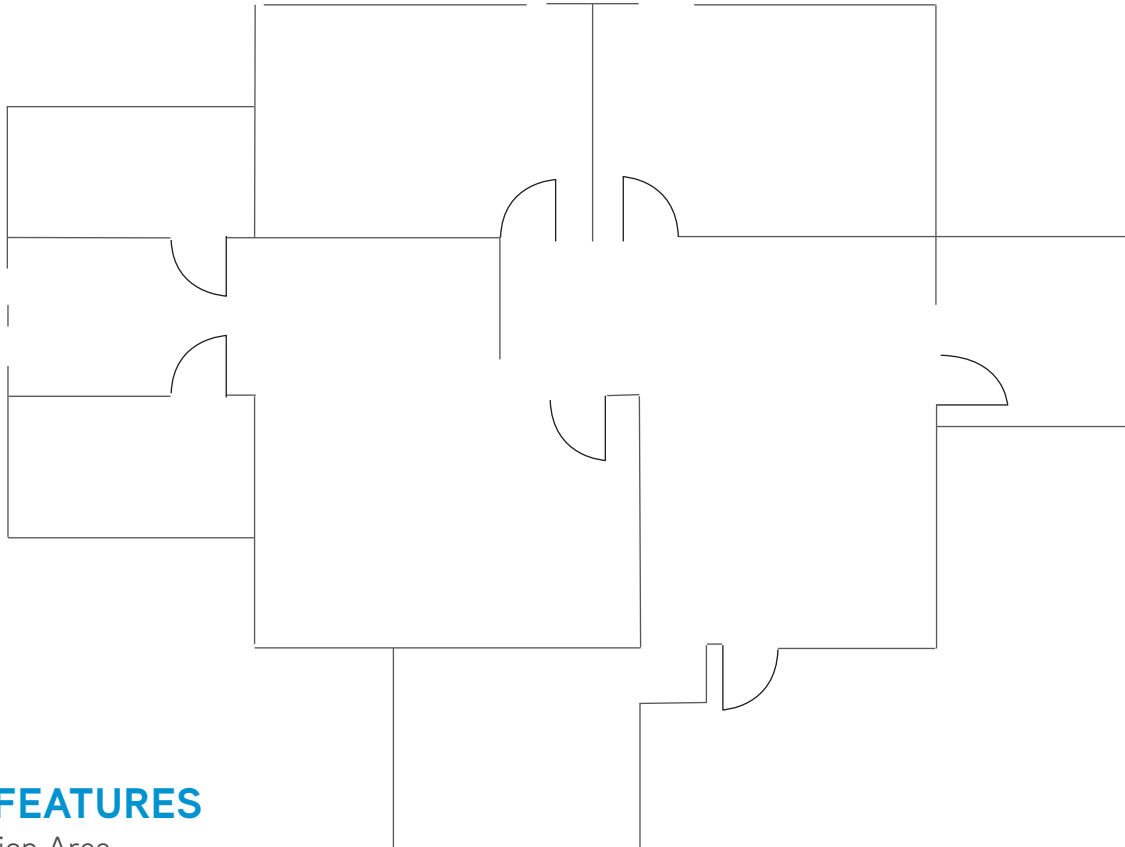
www.colliers.com/rdu

FOR LEASE > OFFICE

105 Kilmayne Drive
Cary, NC 27540



FLOOR PLAN



SUITE FEATURES

- > Reception Area
- > 3 Offices
- > Bullpen
- > Breakroom

BAXTER M. WALKER, III

Senior Vice President

919 582 3112

baxter.walker@colliers.com

KATHY GIGAC

Director of Leasing

919 582 3130

kathy.gigac@colliers.com

COLLIERS INTERNATIONAL

Raleigh-Durham

702 Oberlin Road, Suite 400

Raleigh, NC 27605

www.colliers.com/rdu

DISCLAIMER: No warranty or representation, express or implied, is made to the accuracy of the information contained herein, and same is submitted subject to errors, omissions, change of price, rental or other conditions, withdrawal without notice, and to any special listing conditions imposed by principals.