

FOR LEASE

GRANITE IDAHO

1993 E. 8TH NORTH STREET | MOUNTAIN HOME, ID



PROPERTY INFORMATION

Building Type: Office

Parking: 55 Spaces

SPACE AVAILABLE

SUITE	SIZE	RATE
114	1,919 SF	\$1,439.25 mo/\$9.00 FSEXJ
200	3,535 SF	\$11.50 SF/FS

HIGHLIGHTS

- > Under new Ownership and Management
- > Rare Mountain Home Professional Office space for lease
- > Easy access to I-84 and Downtown Mountain Home
- > Directly across the street from Desert Canyon Golf Course
- > Many sizes to choose from

FOR MORE INFORMATION

MIKE PEÑA
208 472 1666
mike.pena@colliers.com

BRYANT JONES
208 472 1663
bryant.jones@colliers.com

LINCOLN HAGOOD
208 472 1667
lincoln.hagood@colliers.com

Colliers International Idaho | 5700 E. Franklin Dr. Suite 100 Nampa, Idaho 83687 | www.colliers.com/boise | 208 472 1660

Colliers International makes no guarantees, representations or warranties of any kind, expressed or implied, regarding the information including, but not limited to, warranties of content, accuracy and reliability. This publication is the copyrighted property of Colliers International and /or its licensor(s). 2015. All rights reserved subject to change or withdrawal without notice.

FOR LEASE

GRANITE IDAHO

1993 E. 8TH NORTH STREET | MOUNTAIN HOME, ID

Colliers
INTERNATIONAL



FOR MORE INFORMATION

MIKE PEÑA
208 472 1666
mike.pena@colliers.com

BRYANT JONES
208 472 1663
bryant.jones@colliers.com

LINCOLN HAGOOD
208 472 1667
lincoln.hagood@colliers.com

Colliers International Idaho | 5700 E. Franklin Dr. Suite 100 Nampa, Idaho 83687 | www.colliers.com/boise | 208 472 1660

Colliers International makes no guarantees, representations or warranties of any kind, expressed or implied, regarding the information including, but not limited to, warranties of content, accuracy and reliability. This publication is the copyrighted property of Colliers International and /or its licensor(s). 2015. All rights reserved subject to change or withdrawal without notice.

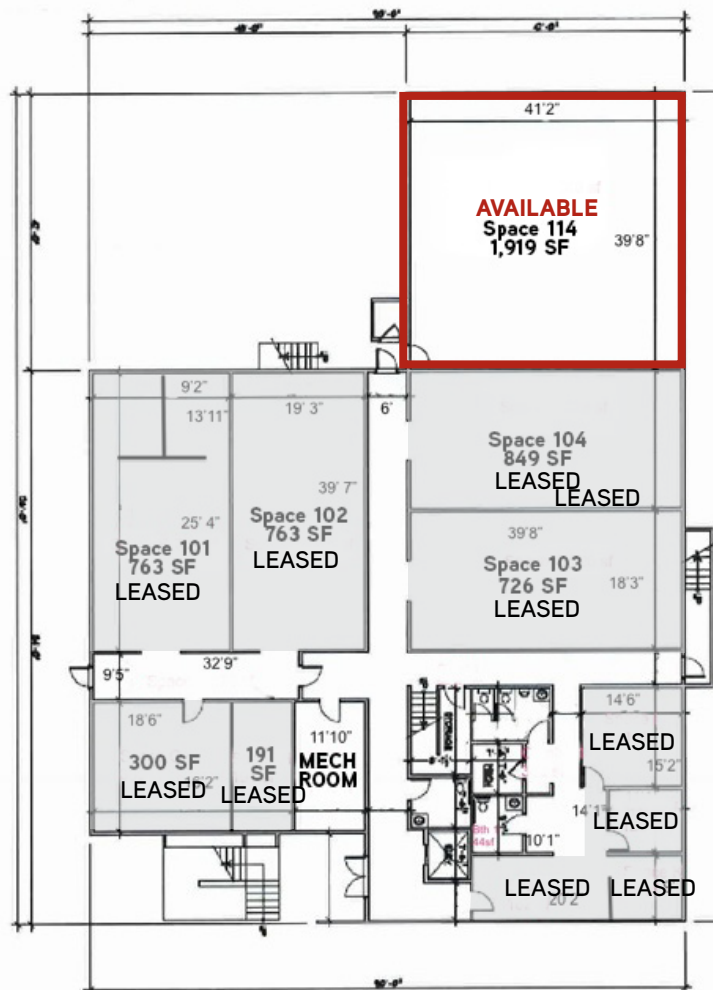
FOR LEASE

GRANITE IDAHO

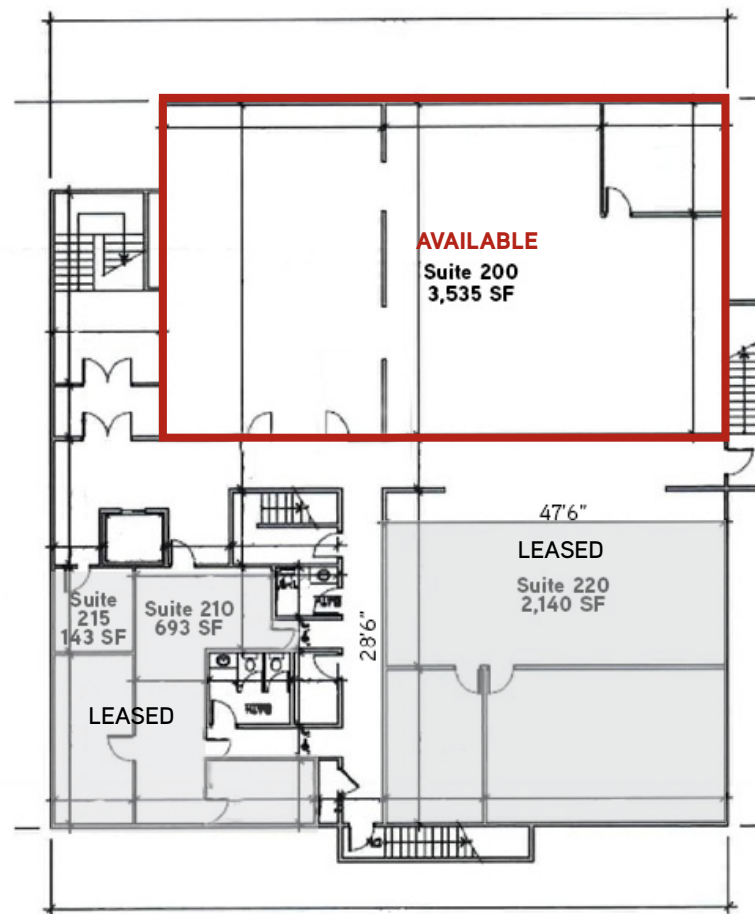
1993 E. 8TH NORTH STREET | MOUNTAIN HOME, ID

Colliers
INTERNATIONAL

BUILDING PLAN (1ST FLOOR)



BUILDING PLAN (2ND FLOOR)



FOR MORE INFORMATION

MIKE PEÑA
208 472 1666
mike.pena@colliers.com

BRYANT JONES
208 472 1663
bryant.jones@colliers.com

LINCOLN HAGOOD
208 472 1667
lincoln.hagood@colliers.com

Colliers International Idaho | 5700 E. Franklin Dr. Suite 100 Nampa, Idaho 83687 | www.colliers.com/boise | 208 472 1660

Colliers International makes no guarantees, representations or warranties of any kind, expressed or implied, regarding the information including, but not limited to, warranties of content, accuracy and reliability. This publication is the copyrighted property of Colliers International and /or its licensor(s). 2015. All rights reserved subject to change or withdrawal without notice.