

# 300 Main Street

S T A M F O R D , C O N N E C T I C U T



**Boutique Office**

**Downtown Stamford**

**Term 5 Years**

**Building Features:**

- Walk to metro center, restaurants & entertainment
- Easy access to I-95
- On-site security
- Building parking garage
- Private decks and patios
- Ground level retail available

GROUND  
**Retail**  
**1,000 SF**

GROUND  
**Suite 100**  
**12,515 SF**

3rd FLOOR  
**Suite 300**  
**9,484 SF**

4th FLOOR  
**Suite 4B**  
**1,000 SF**

5th FLOOR  
**Suite 501**  
**3,295 SF**

5th FLOOR  
**Suite 502**  
**768 SF**

6th FLOOR  
**Suite 602**  
**5,289 SF**

7th FLOOR  
**Suite 705**  
**1,812 SF**

7th FLOOR  
**Suite 707**  
**950 SF**

**CONTACT**

**Stephanie Coleman**  
+1 203 961 6589  
stephanie.coleman@colliers.com

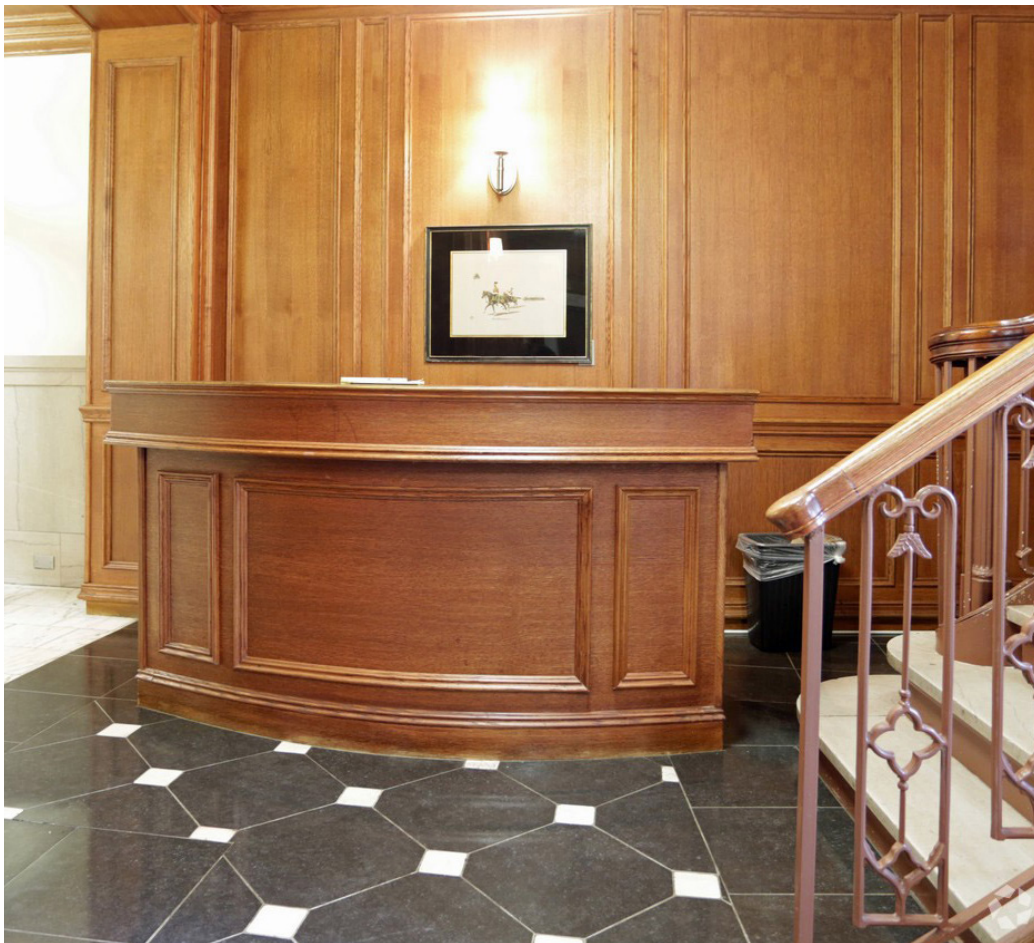
**Al Gutierrez**  
+1 203 961 6591  
al.gutierrez@colliers.com





# 300 Main Street

S T A M F O R D , C O N N E C T I C U T



No representation is made as to the accuracy of the information furnished herein and same is submitted subject to errors, omissions, change of prices, rental, or other conditions, prior sale, lease, sublease, and/or withdrawal without notice. The furnishing of this information shall not be deemed a hiring. A commission in accordance with our principal's schedule of rates and conditions will be paid to the procuring Broker who executes our or our principal's brokerage agreement, subject to a fully consummated transaction upon terms and conditions acceptable to our principal.

