

FOR SALE >



COMMERCIAL LAND - 0.98 Acres

AVENUE 14 & HWY 41, MADERA, CA



> LOCATION

Northwest corner Avenue 14 & Highway 41, Madera, California

> THE PROPERTY

Approximately 0.98 acres (42,704 sf) APN: 051-393-001-000

> **PRICE:** \$267,950 (\$6.27 psf)

> **ZONING:** CRM/MHA

> TERMS

Owner may consider financing the sale to a qualified Buyer. Will require a minimum 25% down payment at the close of escrow.

> COMMENTS:

Excellent Highway 41 frontage property with high visibility & exposure. Property is located 8 minutes north of Fresno and close to commercial businesses along Highway 41. Also located within minutes of Children's Hospital Central California.

BOBBY FENA, SIOR
559 256 2436
FRESNO, CA
bobby.fena@colliers.com
DRE #00590204

COLLIERS INTERNATIONAL
7485 N. Palm Avenue, Suite 110
Fresno, CA 93711
www.colliers.com/fresno

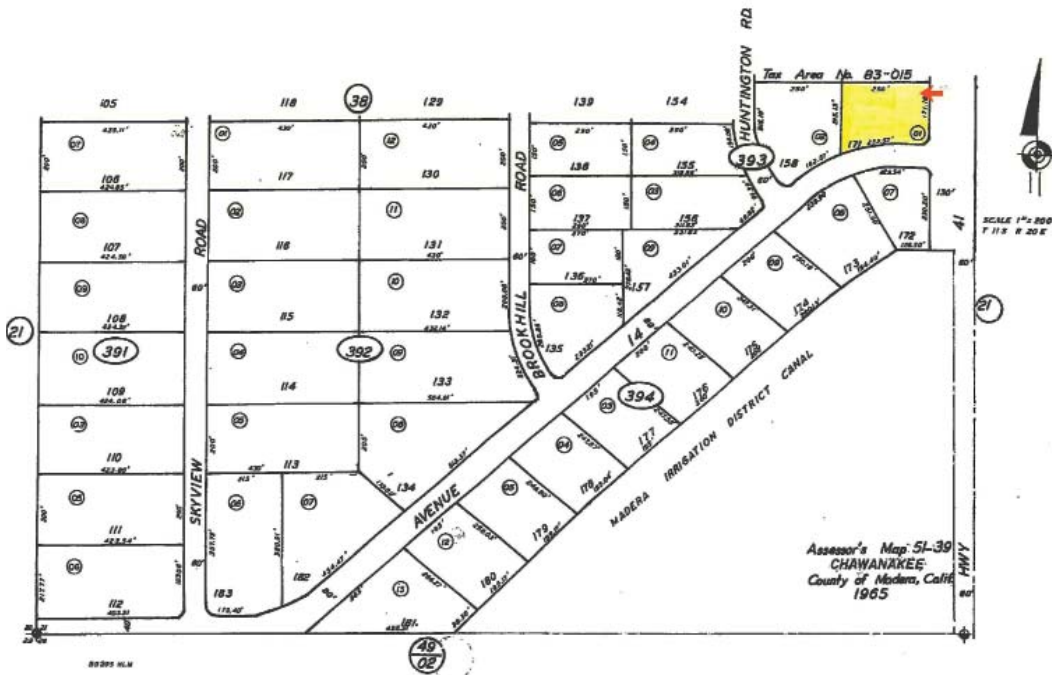
FOR SALE >

Commercial Land - 0.98 Acres

AVENUE 14 & HWY 41, MADERA, CA

BONADELLE RANCHOS NO. 9
TR 148 VOL. 10 PAGES 128-135

5139



- Excellent Highway Access, Visibility & Exposure
- Business are expanding & locating within the immediate area
- Flexible and Motivated Seller
- Attractive terms & conditions

All information, representation and projection shown herein are based on information supplied by sources deemed to be reliable; however, they are not warranted by Colliers International and are subject to change without notice.

Contact Us

BOBBY FENA, SIOR

559 256 2436

FRESNO, CA

bobby.fena@colliers.com

DRE #00590204

COLLIERS INTERNATIONAL
7485 N. Palm Avenue, Suite 110
Fresno, CA 93711
www.colliers.com/fresno

