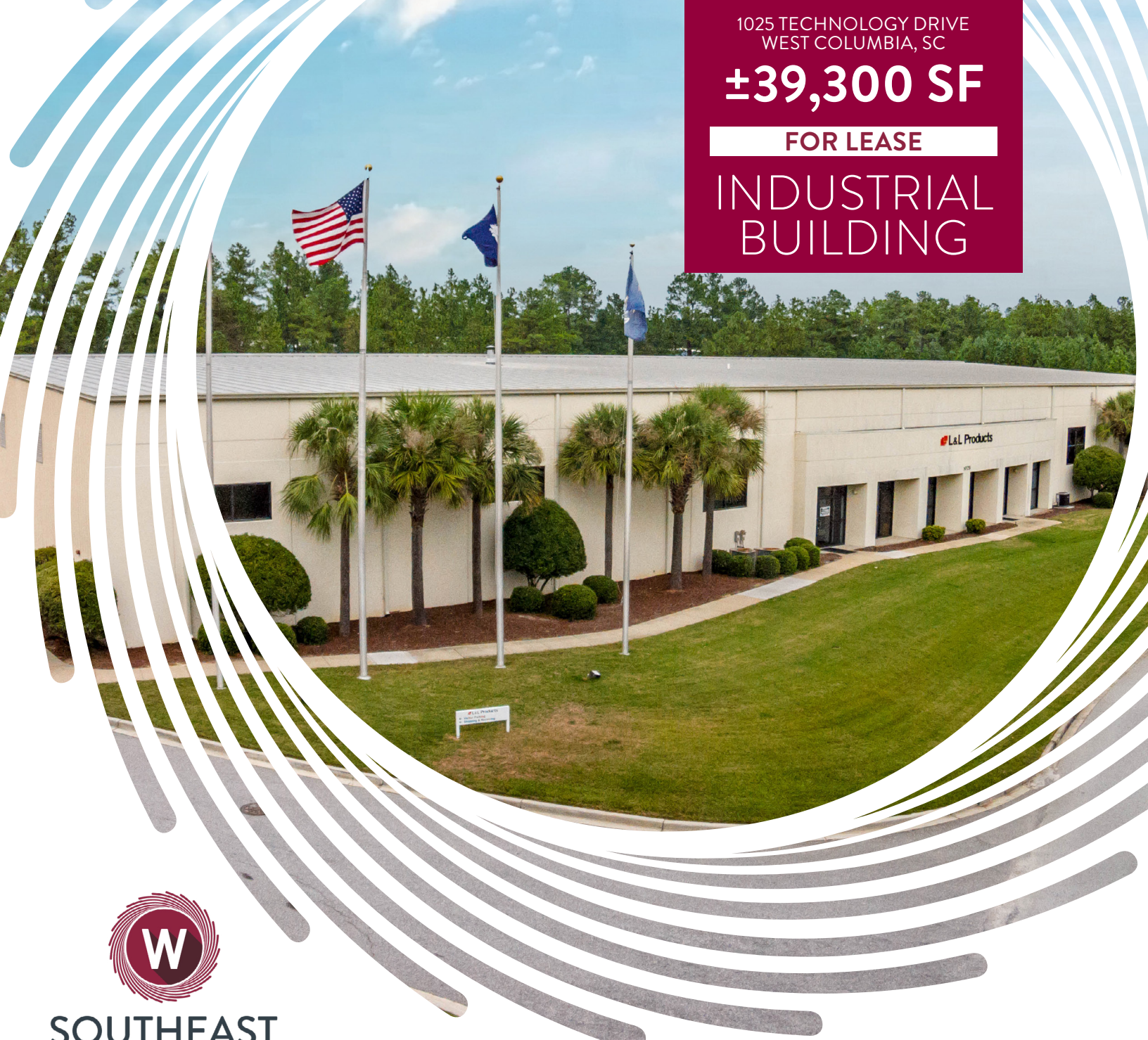


1025 TECHNOLOGY DRIVE  
WEST COLUMBIA, SC

**±39,300 SF**

**FOR LEASE**

**INDUSTRIAL  
BUILDING**



**SOUTHEAST**  
INDUSTRIAL PROPERTIES

**LEASE RATE:**

**\$6.00**  
PSF NNN

**VIEW LISTING** 

[southeastindustrialproperties.com](https://southeastindustrialproperties.com)

### PROPERTY HIGHLIGHTS

- Available 7/1/2026
- Building Area:
  - ±39,300 SF total
  - ±2,837 SF office space
- Site: ±3.95 acres
- Column Spacing: 50' X 40'
- Year Built: 2003

- Construction:
  - Walls** | Pre-engineered metal siding and precast, tilt-up concrete wall panels
  - Floors** | Cast-in-place, reinforced concrete
  - Roof** | Shed roof with standing-seam metal panels
- Utilities:
  - Electricity/Gas** | Dominion Energy
  - Water/Sewer** | City of West Columbia
  - Telecom** | AT&T

**Colliers**

**CHUCK SALLEY, SIOR**

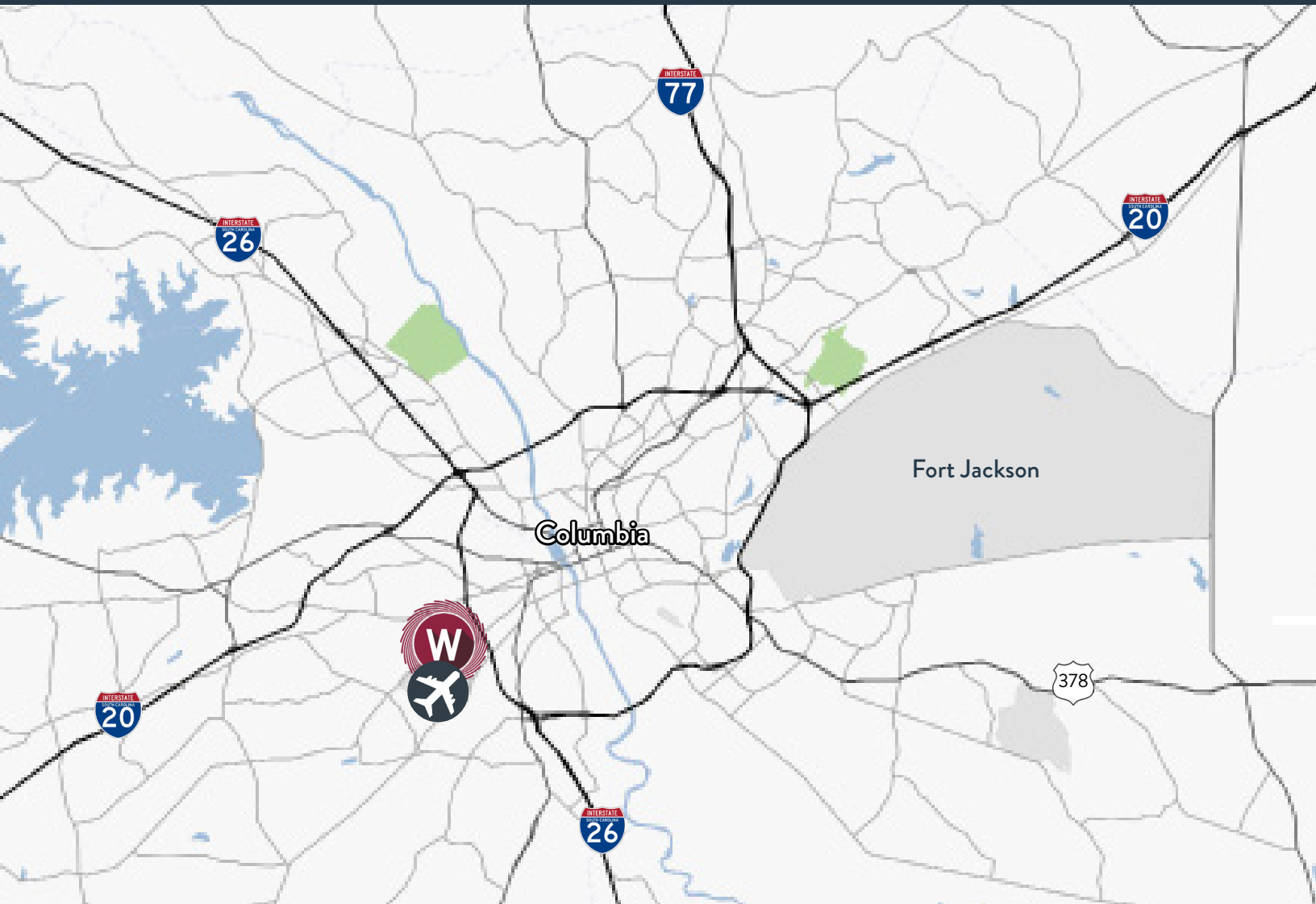
Managing Director  
+1 803 401 4266  
[chuck.salley@colliers.com](mailto:chuck.salley@colliers.com)

**THOMAS BEARD, SIOR**

Vice President  
+1 803 401 4247  
[thomas.beard@colliers.com](mailto:thomas.beard@colliers.com)

**JOHN PEEBLES, SIOR**

Vice President  
+1 803 401 4226  
[john.peebles@colliers.com](mailto:john.peebles@colliers.com)



## THE AREA

Located in the central part of South Carolina, and midway between Atlanta and Charlotte via I-20 and I-77, Lexington County has unparalleled access to markets and raw materials. Nearby Industrial users include Amazon distribution center, Harsco Rail, FedEx Ship Center, UPS Air and Ground Hub and more.

## DISTANCE

Interstate 26	3.8 miles
Interstate 20	4.5 miles
Interstate 77	6.7 miles
Columbia Metropolitan Airport	1.4 miles
Charlotte Douglas International Airport	105 miles
Port of Charleston	114 miles

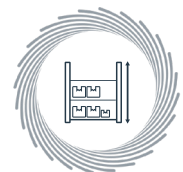
## PROPERTY FEATURES



**PARKING**  
±46 paved spaces



**DOCKS**  
6 dock-high doors (with levelers)  
2 drive-in doors



**CLEAR HEIGHT**  
24'



**HVAC**  
Office 100% heated & cooled



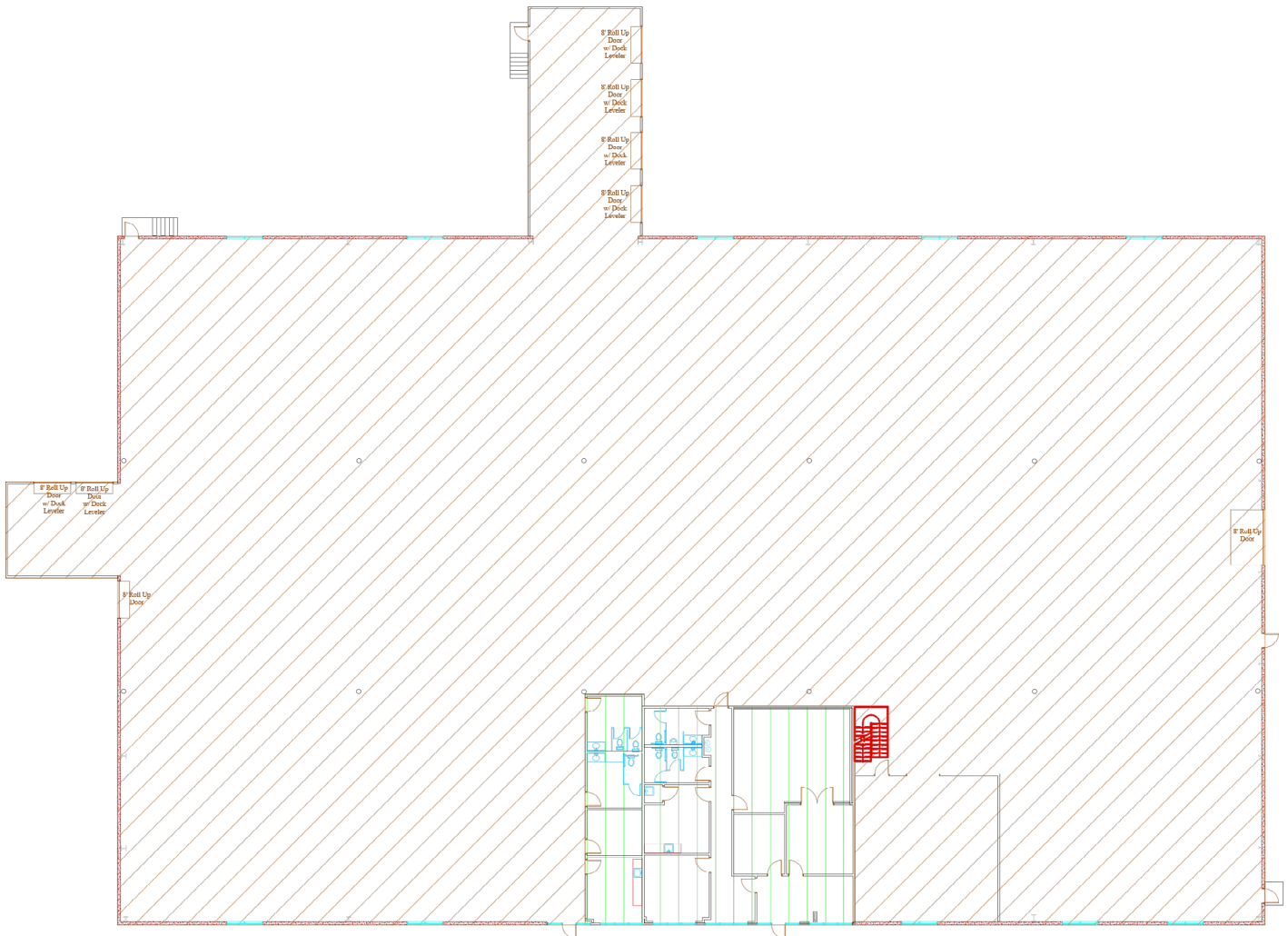
**SPRINKLERS**  
100% wet



**POWER**  
1200 Amps  
277/480V

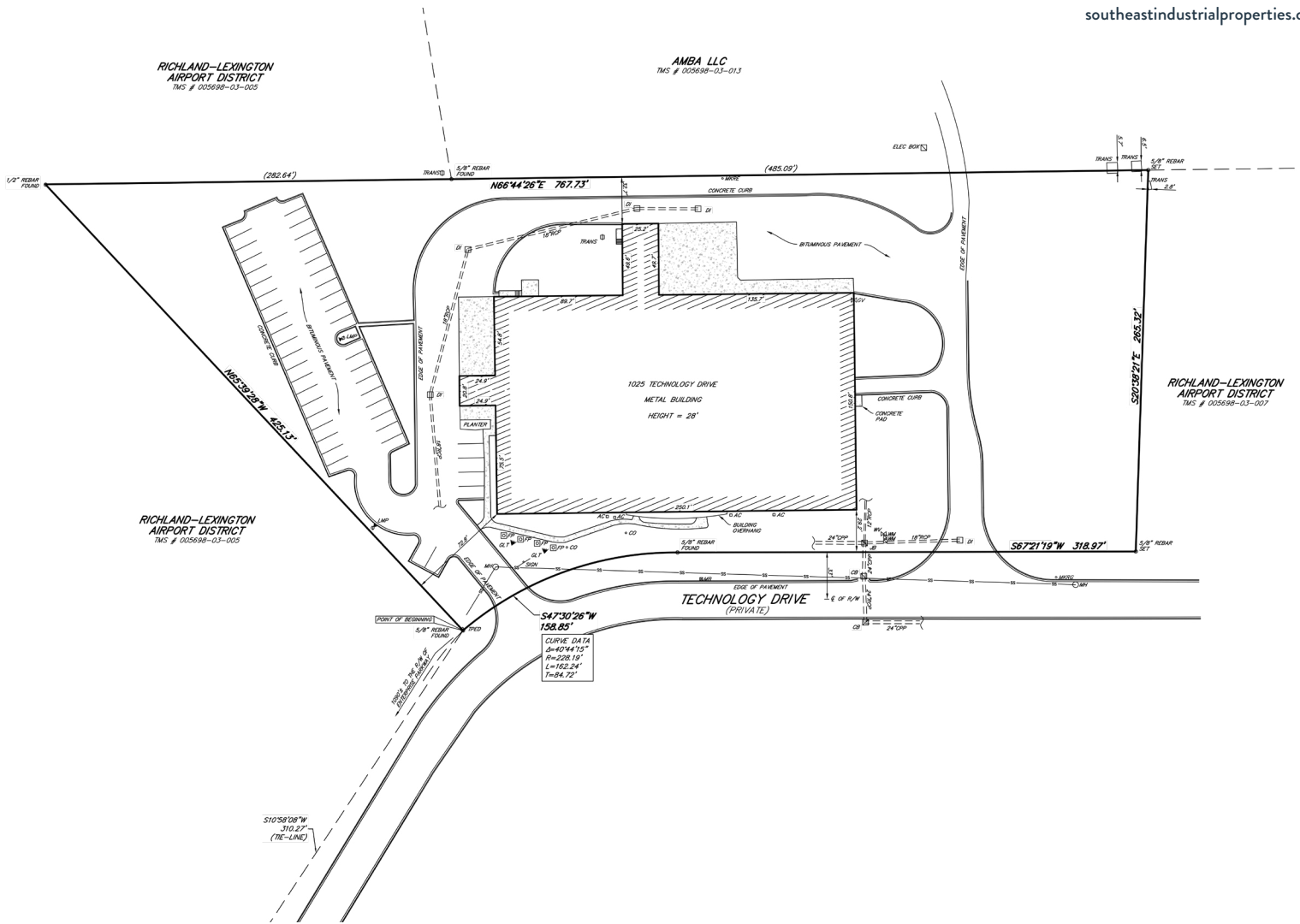


**FOR LEASE** | 1025 TECHNOLOGY DRIVE, WEST COLUMBIA, SC



VIEW LISTING 

southeastindustrialproperties.com



# Colliers

**CHUCK SALLEY, SIOR**  
 Managing Director  
 +1 803 401 4266  
 chuck.salley@colliers.com

**THOMAS BEARD, SIOR**  
 Vice President  
 +1 803 401 4247  
 thomas.beard@colliers.com

**JOHN PEEBLES, SIOR**  
 Vice President  
 +1 803 401 4226  
 john.peebles@colliers.com

This document has been prepared by Colliers International for advertising and general information only. Colliers International makes no guarantees, representations or warranties of any kind, expressed or implied, regarding the information including, but not limited to, warranties of content, accuracy and reliability. Any interested party should undertake their own inquiries as to the accuracy of the information. Colliers International excludes unequivocally all inferred or implied terms, conditions and warranties arising out of this document and excludes all liability for loss and damages arising therefrom. This publication is the copyrighted property of Colliers International and/or its licensor(s). ©2026. All rights reserved.



Providing homes for businesses by finding solutions that create value.