

LAND FOR SALE >

Maple Grove Land

9350 Upland Lane North | Maple Grove, MN



Accelerating success.



PROPERTY HIGHLIGHTS

- > Rare development opportunity
- > Up to 3.48 acres available
- > Good access to I-94
- > Access via Upland Lane & 95th Avenue North
- > Highway 610 now open to Interstate 94
- > Site is adjacent to Maple Grove Covenant Church, medium density residential, and numerous commercial uses
- > Medical uses in surrounding area include: Maple Grove Hospital, Park Nicollet Health Services, Fairview, medical office and more
- > Near 1,000 stall Park & Ride
- > Area retailers: Home Depot, Target, Menards, Sam's Club and more

CONTACT US

Ted Gonsior
952 897 7744

ted.gonsior@colliers.com

John Johansson
952 897 7750

john.johansson@colliers.com

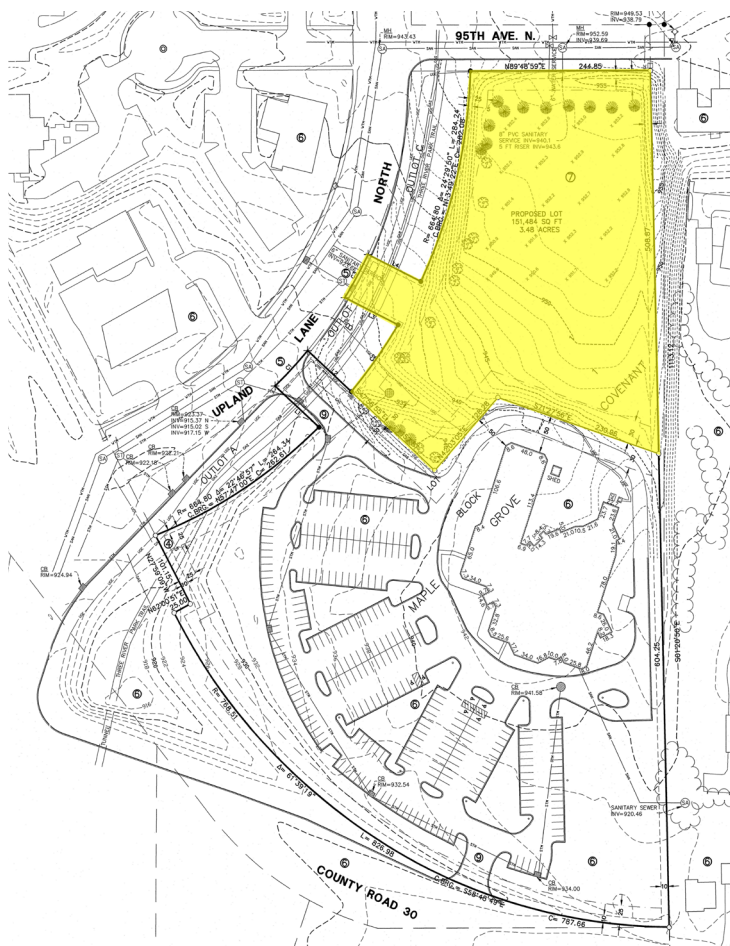
[Twitter](#) [LinkedIn](#) [Blog](#) [SUBSCRIBE TO OUR BLOG](#)

MAPLE GROVE LAND > DETAILS

- > Address 9350 Upland Lane North
Maple Grove, MN 55369
- > Description Approximately 3.48 acre site - can subdivide

> Demographics	1 Miles	3 Miles	5 Miles
Population	6,274	40,667	86,773
Median HH Income	\$102,112	\$104,182	\$97,894
Average HH Income	\$121,416	\$127,485	\$121,468

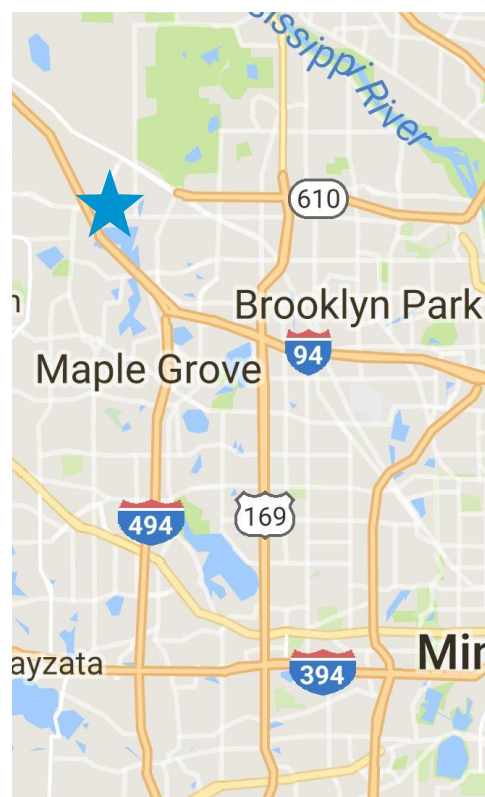
- > Sale Price \$2,272,000



CONTACT US

Ted Gonsior
952 897 7744
ted.gonsior@colliers.com

John Johansson
952 897 7750
jjohansson@colliers.com



Accelerating success.

Colliers International | Minneapolis-St. Paul | 4350 Baker Road, Suite 400, Minnetonka, MN 55343 | colliers.com/msp