

FOR LEASE > RETAIL SPACE

10 MARKETPLACE

1800 EAST 23RD, LAWRENCE, KS



Property Description

New ownership! Join Z's Divine Espresso and Set'em Up Jacks in this established retail center accessible from East 23rd or Harper Streets. Tenants can take advantage of ample free parking. Each available space features large store front windows and ADAAA compliant access for customers and clients. A former bank space features drive-thru access.

Property Highlights

- > Available space: 1,100 - 6,300 SF
- > Built in 1999
- > Zoning: PCD
- > Lease rate: \$12/SF, NNN

Available Suites

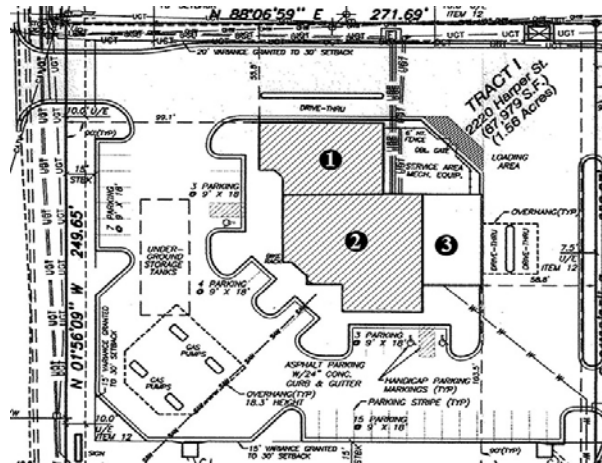
- > Suite B: 2,240 SF
- > Suite C: 2,464 SF
- > Suite D: 1,600 SF
- > Suite M: 2,290
- > Suite 2220A: 1,500 SF



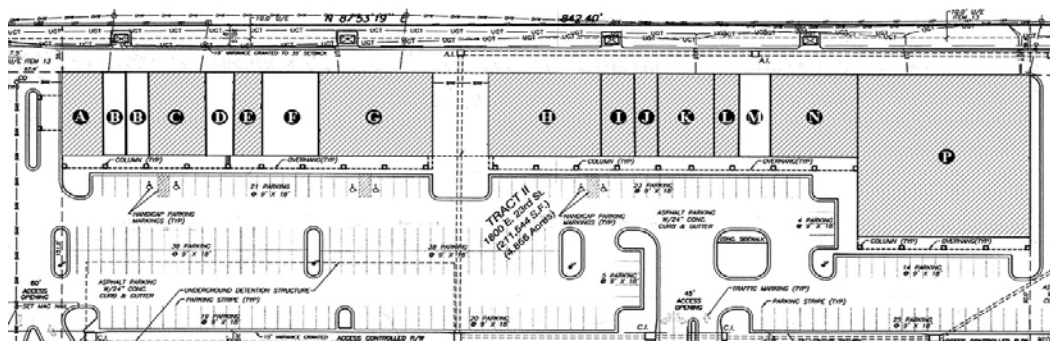
AGENT: KIRSTEN FLORY
+1 785-865-3821
LAWRENCE, KS
kirsten.flory@colliers.com

COLLIERS INTERNATIONAL
805 New Hampshire, Suite C
Lawrence, KS 66044
www.colliers.com

10 Marketplace: Site Plan



Suite	Tenant	SF
1.	Liquor Store	2,480
2.	Conoco	4,020
3.	Vacant	1,500



Suite	Tenant	SF
A.	Z's Divine Espresso	1,376
B.	Vacant	1,140
B-1.	Vacant	1,100
C.	Vacant	2,464
D.	Vacant	1,600
E.	Kutz Family Hair Care	1,280
F.	Prime Martial Arts	2,560
G.	Set 'Em Up Jacks	5,165

Suite	Tenant	SF
H.	El Sol Lawrence	4,000
I.	Subway	1,600
J.	Nail Citi	850
K.	Kansas Department of Corrections	2,670
L.	Cash-2-Go	1,380
M.	Vacant	2,290
N.	Jin Shan Buffet	3,840
P.	Connex International	15,128

Leased



Leased but not occupied



Vacant





10 Marketplace Current Tenants

Z's Divine Espresso

Prime Martial Arts

Kutz

Set'em Up Jacks

Tres Mexicanos

Subway

Jin Shan Buffet

Duci Nail

Cash 2 Go

