

FOR LEASE > CLASS 'A' OFFICE SPACE



Kirkland 405 Corporate Center - Building C

12020 - 113TH AVE. NE, KIRKLAND, WA 98034



Available Space

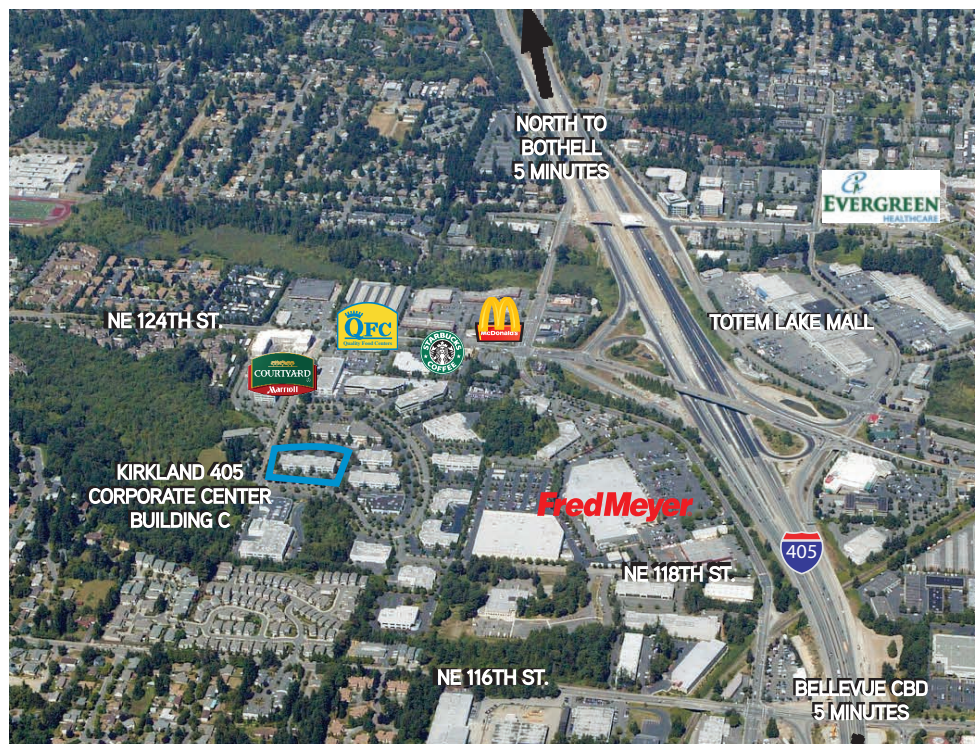
- > Suite 100: 12,820 RSF
- available immediately
- > Suite 200: 1,822 RSF
- available March 1, 2018
- > Suite 295: 2,004 RSF
- available immediately

Property Features

- > High quality image building
- > Close proximity to numerous retail amenities and hotels
- > Excellent, direct access to I-405
- > Building signage available

Lease Rate

- > \$19.00/RSF/Yr, NNN



DEREK HEED
425 453 3133
BELLEVUE, WA
derek.heed@colliers.com

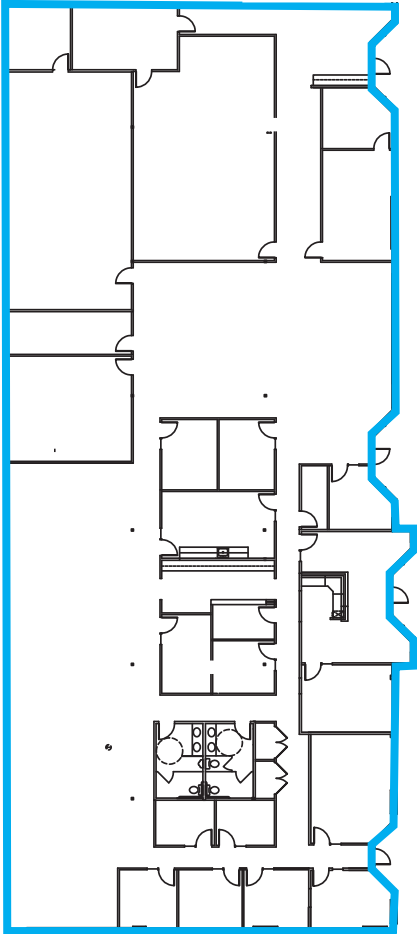
GREG SKIPPER
425 453 3138
BELLEVUE, WA
greg.skipper@colliers.com

COLLIERS INTERNATIONAL
11225 SE 6th Street, Suite 240
Bellevue, WA 98004
www.colliers.com

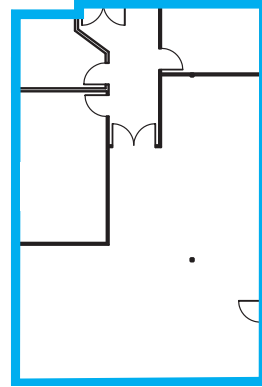
FOR LEASE > CLASS 'A' OFFICE SPACE

Kirkland 405 Corporate Center - Building C > Floor Plans

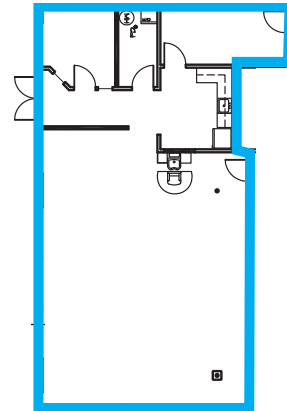
Suite 100: 12,820 RSF



Suite 295: 2,004 RSF



Suite 200: 1,822 RSF



DEREK HEED
425 453 3133
BELLEVUE, WA
derek.heed@colliers.com

GREG SKIPPER
425 453 3138
BELLEVUE, WA
greg.skipper@colliers.com

COLLIERS INTERNATIONAL
11225 SE 6th Street, Suite 240
Bellevue, WA 98004
www.colliers.com