

FOR SALE

MEADOW TERRACE PROJECT

NEQ W Cottage Avenue and Mayre Street
St. Paul, MN

MIKE BRASS | 952 837 3054 | mike.brass@colliers.com



View from Mayre Street and Cottage Avenue

Colliers
INTERNATIONAL



NEQ W Cottage Ave & Mayre St, St. Paul, MN

FOR SALE

Site Information

PROPOSED DEVELOPMENT FOR :

- > 79,300 square foot multi-family residential building or
- > 50 unit apartments or 90+ unit senior housing

OFFERING PRICE:

\$700,000

ACRES:

The city consists of 17 city lots, totaling approximately 2.7 acres

LOCATION:

- > Southern half of city block Mayre St. Cottage Ave. & Sylvan St.
- > 3 miles from downtown St. Paul
- > Easy access to 35E
- > Bus lines on Arlington Ave. & 2 blocks away on Rice St.

SITE & SURROUNDINGS:

- > Neighborhood consists of single family houses, apartment buildings, offices & light industrial
- > Fully developed area

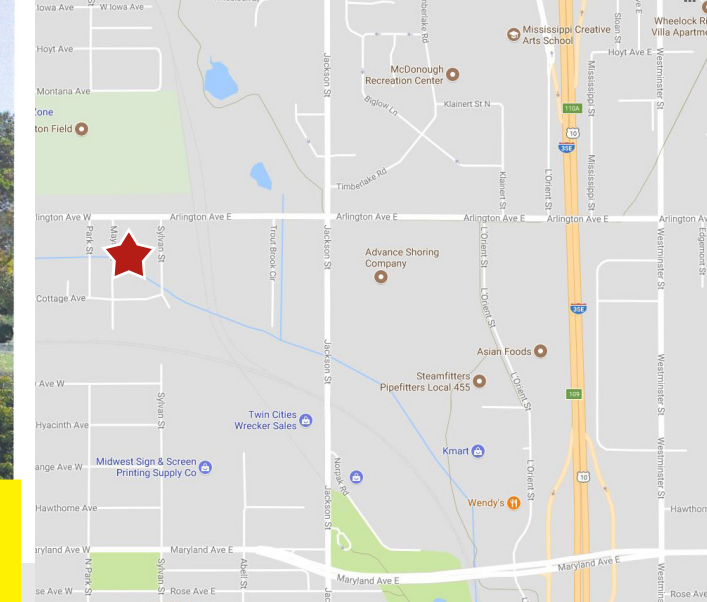
DEMOGRAPHICS:

	1 Mile	3 Mile	5 Mile
Population	15,084	145,057	328,358
Median HH Income	\$34,837	\$39,766	\$44,022
Avg HH Income	\$39,014	\$46,631	\$52,780

* Source: ESRI 2014 estimates

TRAFFIC COUNTS:

- > Arlington Ave: 68,000 vpd
- > Rice St: 15,400 vpd



Contact Us

MIKE BRASS

952 837 3054

mike.brass@colliers.com

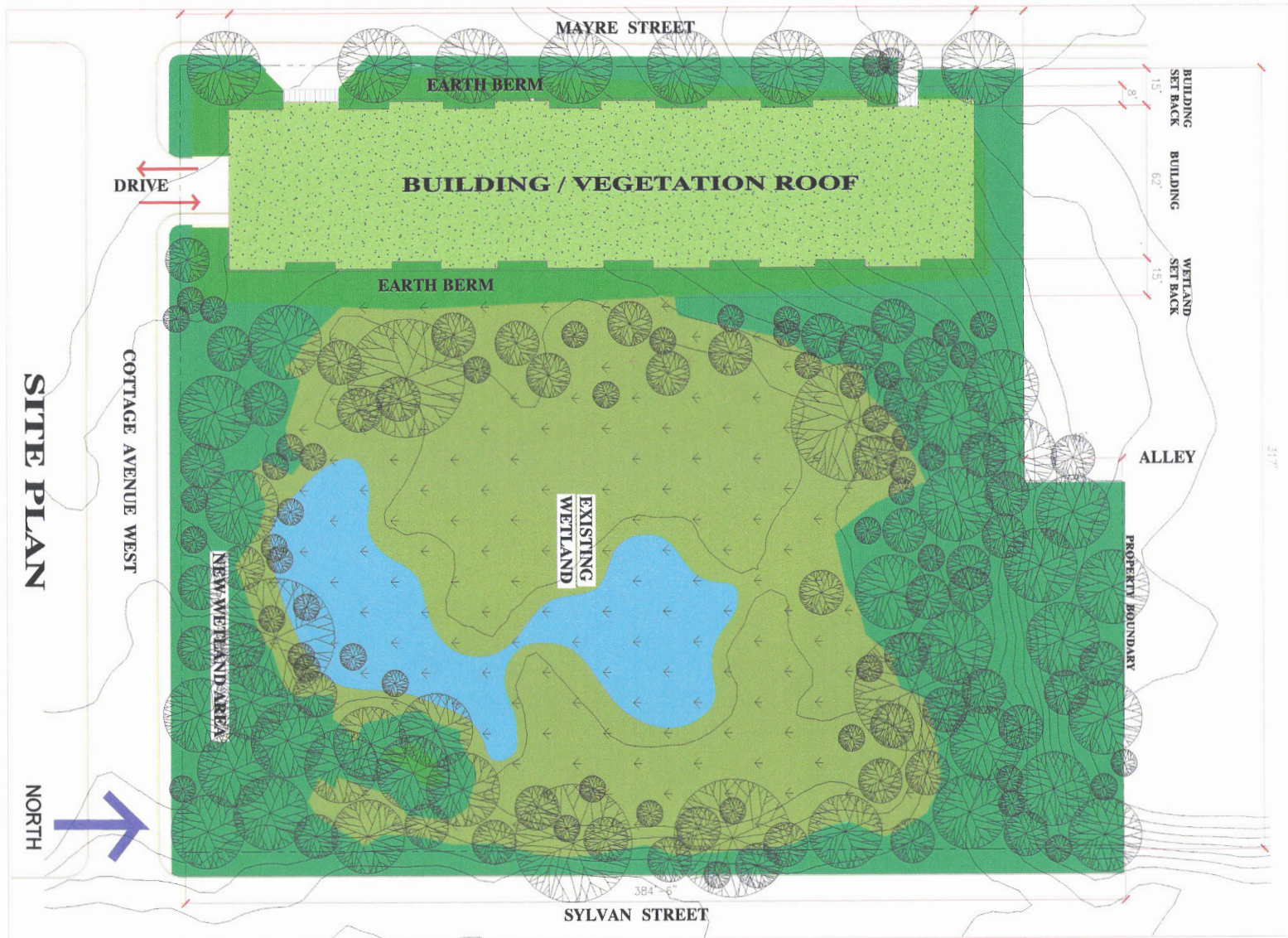


COLLIERS INTERNATIONAL
5985 Rice Creek Parkway
Suite 105
Shoreview, MN 55126
www.colliers.com/msp



MIKE BRASS
952 837 3054
mike.brass@colliers.com





MIKE BRASS
 952 837 3054
mike.brass@colliers.com