

FOR LEASE > RETAIL SPACE

701 SANSOME STREET

JACKSON SQUARE | SAN FRANCISCO, CA



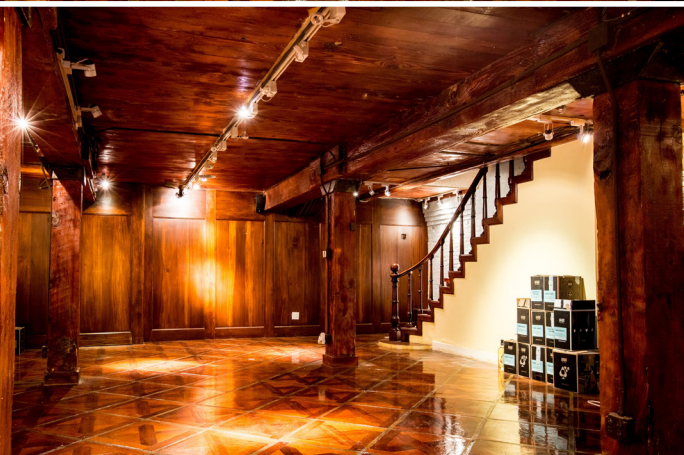
Prime Retail Corner in Jackson Square

- Approximately 1,800 Square Feet, Ground Floor +1,800 Sq.Ft. Lower Level
- Hard Corner location on busy intersection
- High ceilings with elegant finishes throughout entire space
- Flooded with natural light
- Beautiful Parquet floors
- ADA Entryway & Restroom in-place
- Historic brick & timber building
- Window frontage on Sansome & Jackson Streets
- Parking across the street
- Q4 2018 Delivery

PETE MIKACICH
lic. 01133104
415 288 7815
peter.mikacich@colliers.com

SHAUN BLOOMQUIST
lic. 01501651
415 288 7867
shaun.bloomquist@colliers.com

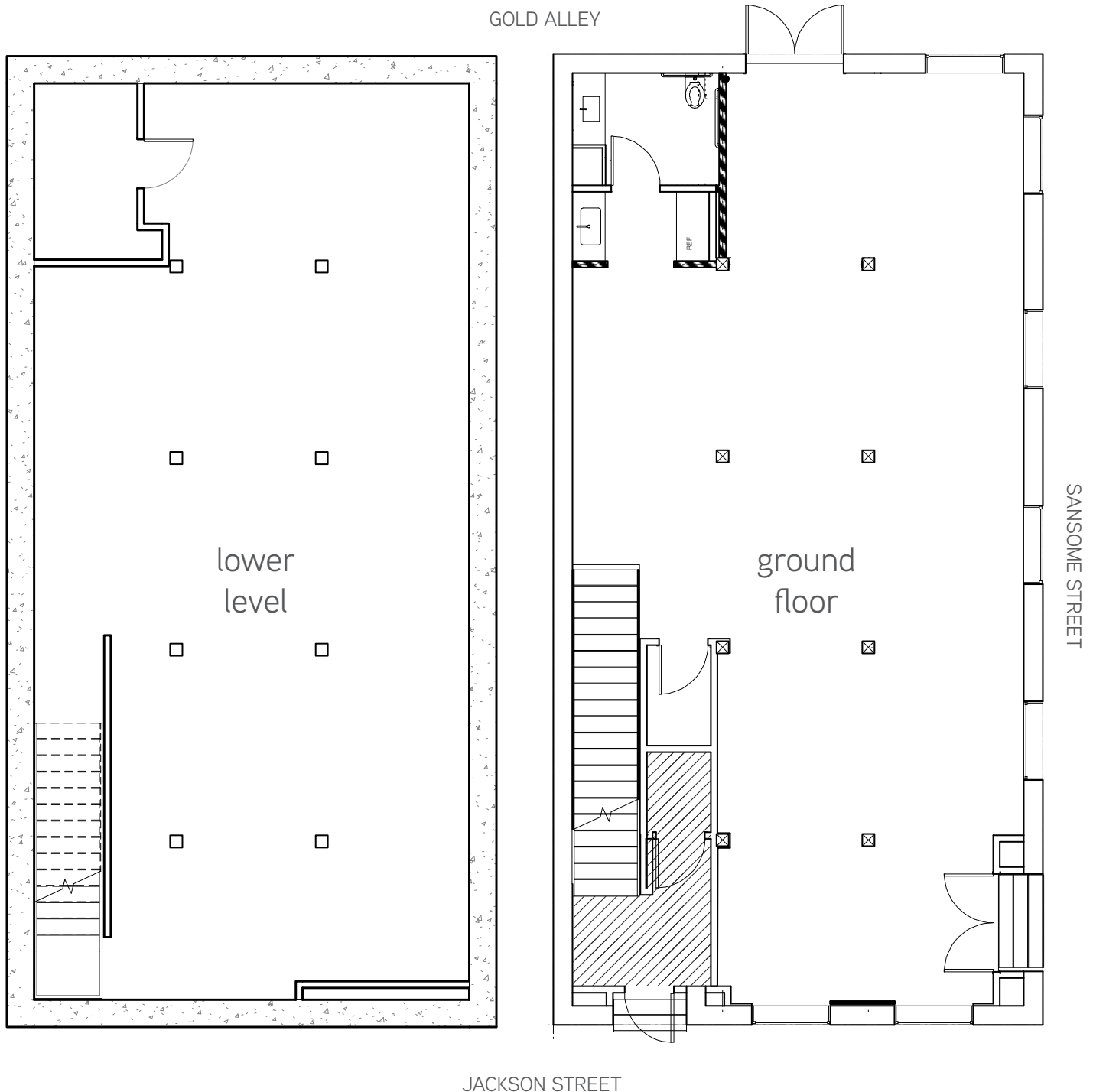
COLLIERS INTERNATIONAL
101 Second Street, 11th Floor
San Francisco, CA 94105
www.colliers.com/sanfrancisco



FOR LEASE > RETAIL SPACE

701 SANSOME STREET

JACKSON SQUARE | SAN FRANCISCO, CA



This marketing piece has been prepared by Colliers International for general information only. Information contained herein has been obtained from sources deemed reliable and no representation is made as to the accuracy thereof. Colliers International does not guarantee, warrant or represent that the information contained in this document is correct. Any interested party should undertake their own inquiries as to the accuracy of the information. Colliers International excludes unequivocally all inferred or implied terms, conditions and warranties arising out of this document and excludes all liability for loss and damages arising there from.

FOR LEASE > RETAIL SPACE

701 SANSOME STREET

JACKSON SQUARE | SAN FRANCISCO, CA



PETE MIKACICH
lic. 01133104
415 288 7815
peter.mikacich@colliers.com

SHAUN BLOOMQUIST
lic. 01501651
415 288 7867
shaun.bloomquist@colliers.com

COLLIERS INTERNATIONAL
101 Second Street, 11th Floor
San Francisco, CA 94105
www.colliers.com/sanfrancisco