

FOR SALE > 113,837 RSF > FULTON INDUSTRIAL



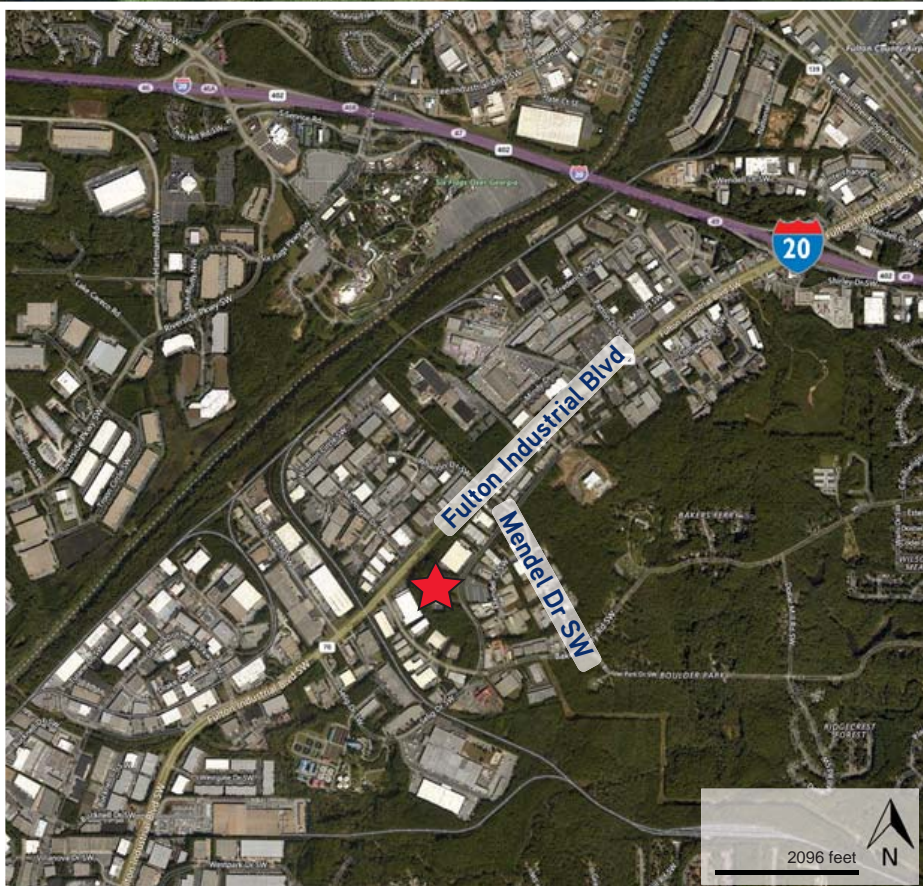
# 200 SELIG DRIVE SW

ATLANTA, GEORGIA 30336



## Building Details

- > 113,837 SF warehouse building in Fulton Industrial submarket
- > 96,761 SF warehouse, 17,076 SF office
- > Well maintained building with same owner since 1968
- > 7 dock high doors, 2 ground level doors
- > 480V 3 phase 2500 AMPS
- > 14 - 16' clear height
- > 17.92 acre site
- > Roof was replaced in 2004. A portion was replaced in 2012 and still under 15-year warranty
- > Easy access via I-20 and Fulton Industrial
- > Built in 1968
- > 134 surface parking spaces
- > Zoned M-2 Heavy Industrial
- > Can be vacated within thirty (30) days of agreement; will be fully vacated by January 31, 2019



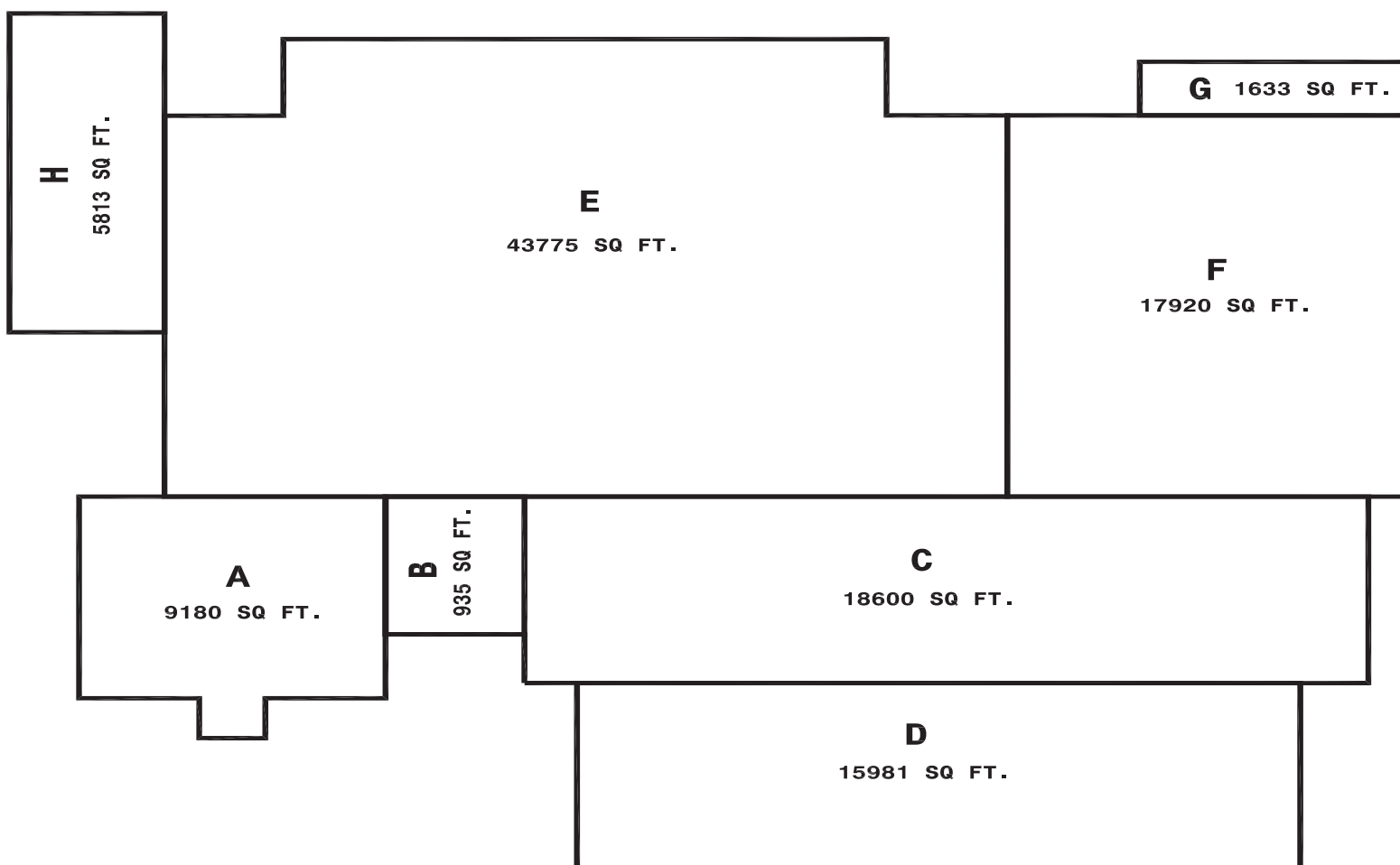
DREW LEVINE  
Senior Vice President  
+1 404 877 9294 DIRECT  
drew.levine@colliers.com

JODI SELVEY  
Senior Vice President  
+1 404 877 9278 DIRECT  
jodi.selvey@colliers.com

COLLIERS INTERNATIONAL  
Promenade, Suite 800  
1230 Peachtree Street NE  
Atlanta, Georgia 30309  
www.colliers.com

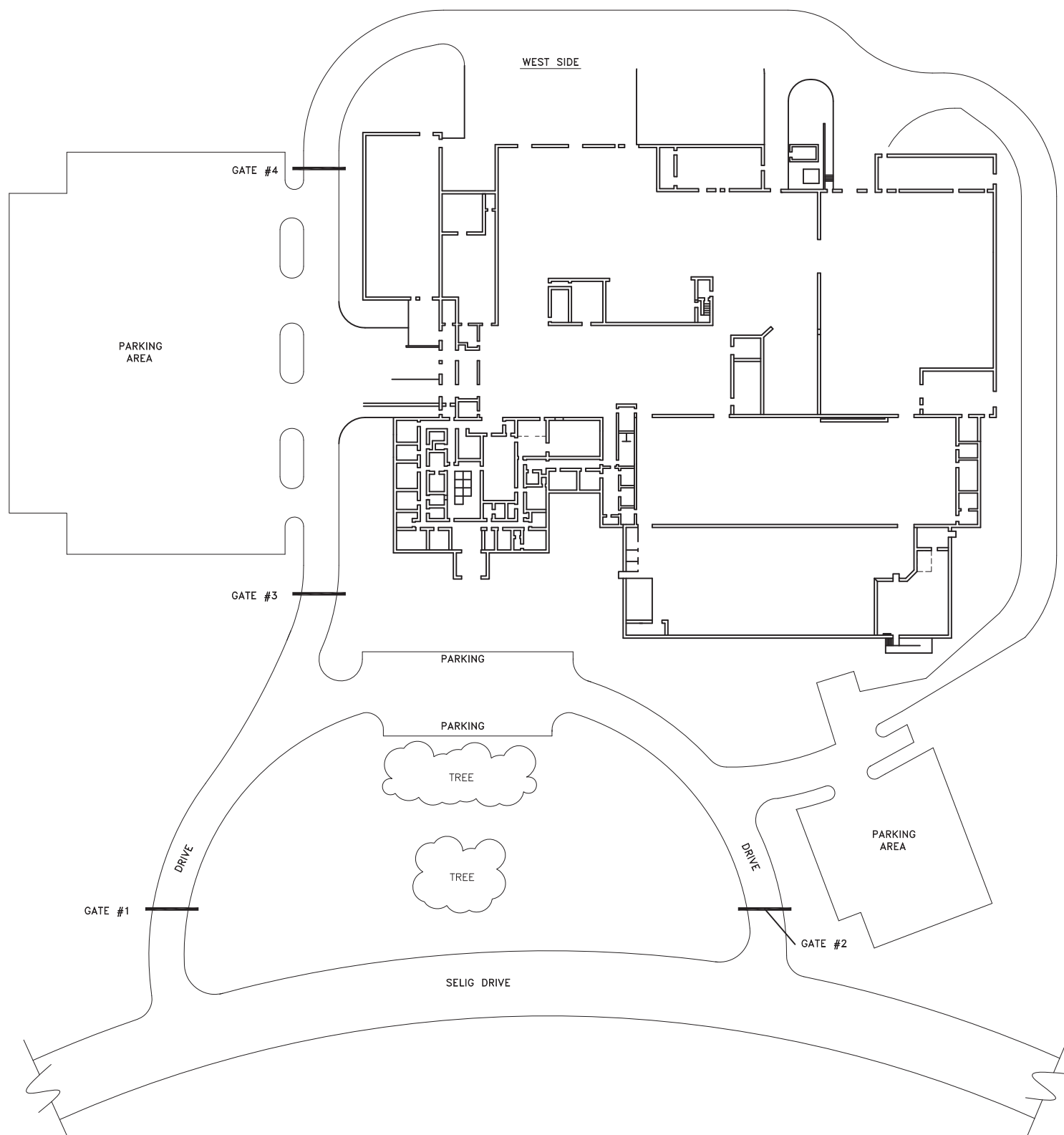
# 200 SELIG DRIVE SW

ATLANTA, GEORGIA 30336



# 200 SELIG DRIVE SW

ATLANTA, GEORGIA 30336



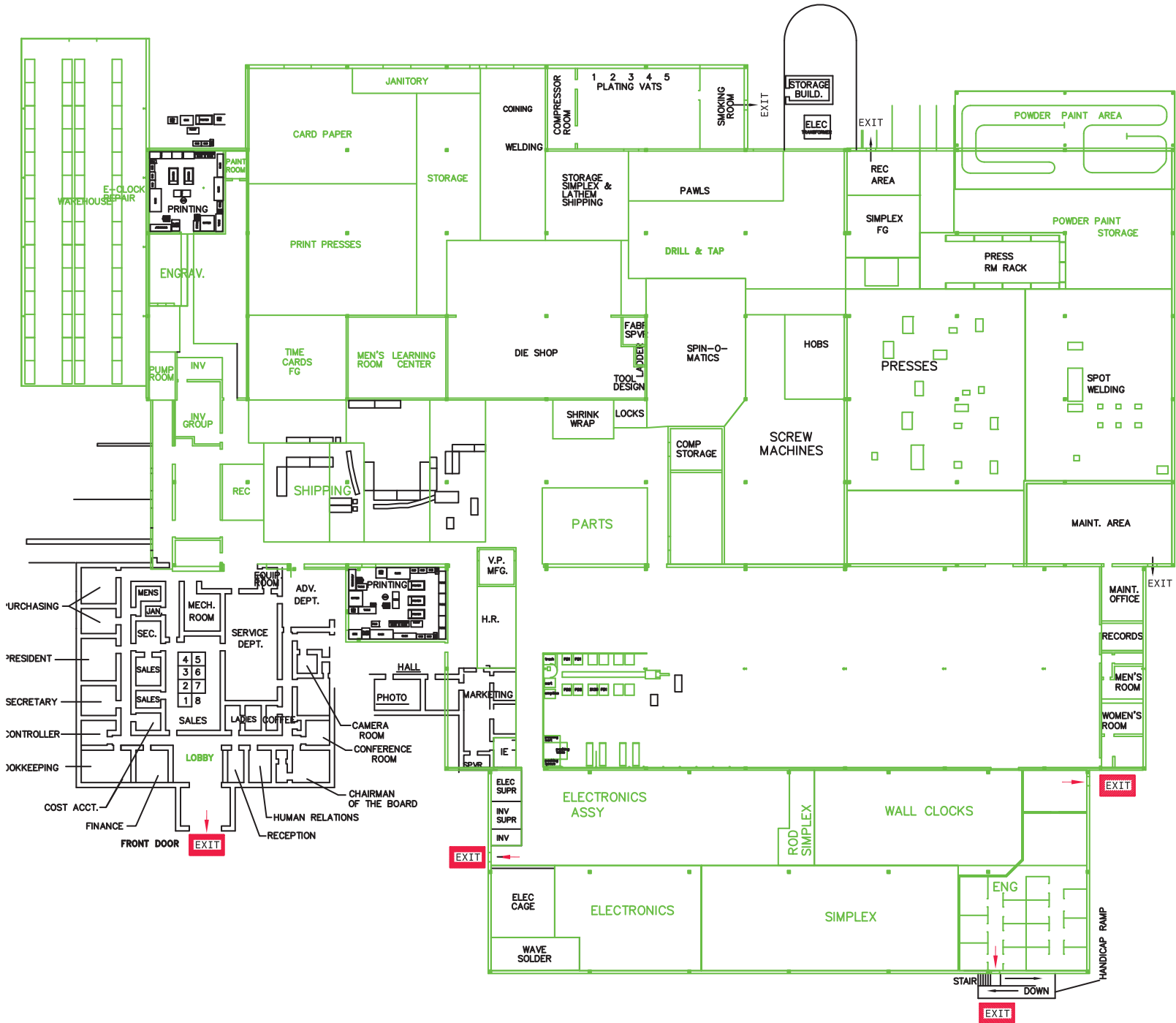
DREW LEVINE  
+1 404 877 9294 DIRECT  
drew.levine@colliers.com

JODI SELVEY  
+ 1 404 877 9278 DIRECT  
jodi.selvey@colliers.com

COLLIERS INTERNATIONAL  
Promenade, Suite 800  
1230 Peachtree Street NE  
Atlanta, Georgia 30309-3574  
www.colliers.com

# 200 SELIG DRIVE SW

ATLANTA, GEORGIA 30336



DREW LEVINE  
+1 404 877 9294 DIRECT  
drew.levine@colliers.com

JODI SELVEY  
+ 1 404 877 9278 DIRECT  
jodi.selvey@colliers.com

**COLLIERS INTERNATIONAL**  
Promenade, Suite 800  
1230 Peachtree Street NE  
Atlanta, Georgia 30309-3574  
www.colliers.com



FOR SALE > 113,837 RSF > FULTON INDUSTRIAL

# 200 SELIG DRIVE SW

ATLANTA, GEORGIA 30336



DREW LEVINE  
+1 404 877 9294 DIRECT  
drew.levine@colliers.com

JODI SELVEY  
+ 1 404 877 9278 DIRECT  
jodi.selvey@colliers.com

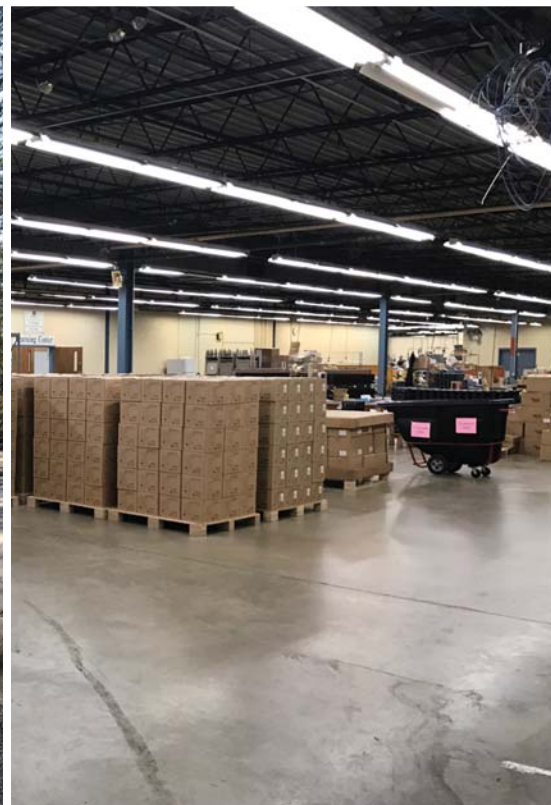
COLLIERS INTERNATIONAL  
Promenade, Suite 800  
1230 Peachtree Street NE  
Atlanta, Georgia 30309-3574  
www.colliers.com



FOR SALE > 113,837 RSF > FULTON INDUSTRIAL

# 200 SELIG DRIVE SW

ATLANTA, GEORGIA 30336



DREW LEVINE  
+1 404 877 9294 DIRECT  
drew.levine@colliers.com

JODI SELVEY  
+1 404 877 9278 DIRECT  
jodi.selvey@colliers.com

Colliers International - Atlanta, Inc., and certain of its subsidiaries, is an independently owned and operated business and a member firm of Colliers International Property Consultants, an affiliation of independent companies with over 480 offices throughout more than 61 countries worldwide. Information contained herein has been obtained from the owner of the property or other sources that we deem reliable. We have no reason to doubt its accuracy, but we do not guarantee it.