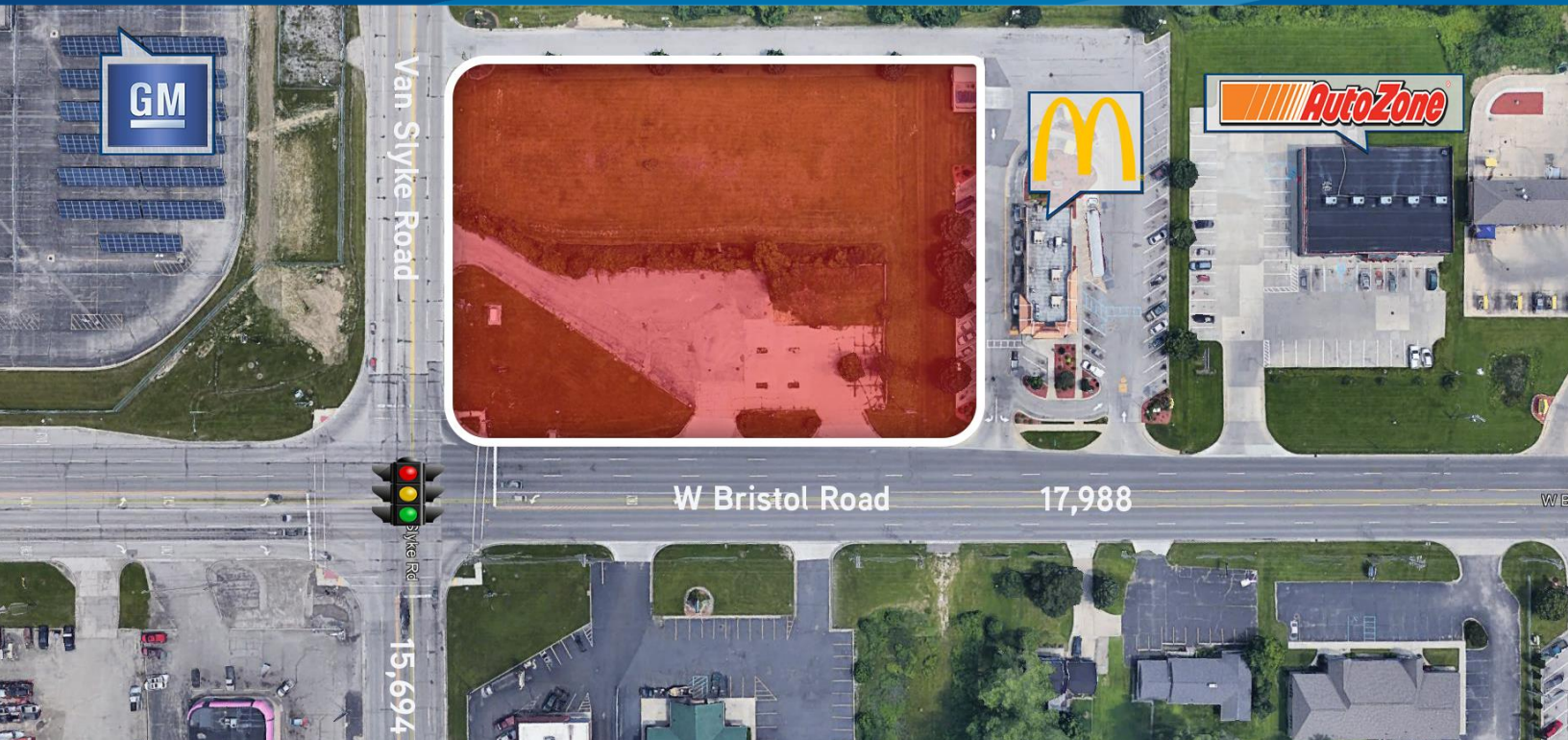


FOR SALE > VACANT LAND

2.23 ACRES

1508 WEST BRISTOL ROAD | FLINT TOWNSHIP, MICHIGAN



GREAT TRAFFIC COUNTS

> PROPERTY HIGHLIGHTS

- 2.23 Acres of Vacant Land on Lighted Hard Corner
- Large Enough for Two Pads with Drive-Thru
- Next to McDonalds, AutoZone and General Motors Flint Engine Operations

> DEMOGRAPHICS

	1 MILE	3 MILE	5 MILE
POPULATION	5,846	52,135	129,593
AVG. INCOME	\$53,155	\$54,355	\$53,885
HOUSEHOLDS	2,400	21,691	54,377

COLLIERS INTERNATIONAL

2 Corporate Drive | Suite 300

Southfield, Michigan 48076

For More Information Call:

BEN HUBERT

PHONE 248 540 1000 EXT 1864

EMAIL ben.hubert@colliers.com



BEN ROSENZWEIG

PHONE 248 540 1000 EXT 1866

EMAIL ben.rosenzweig@colliers.com



colliers.com/detroit



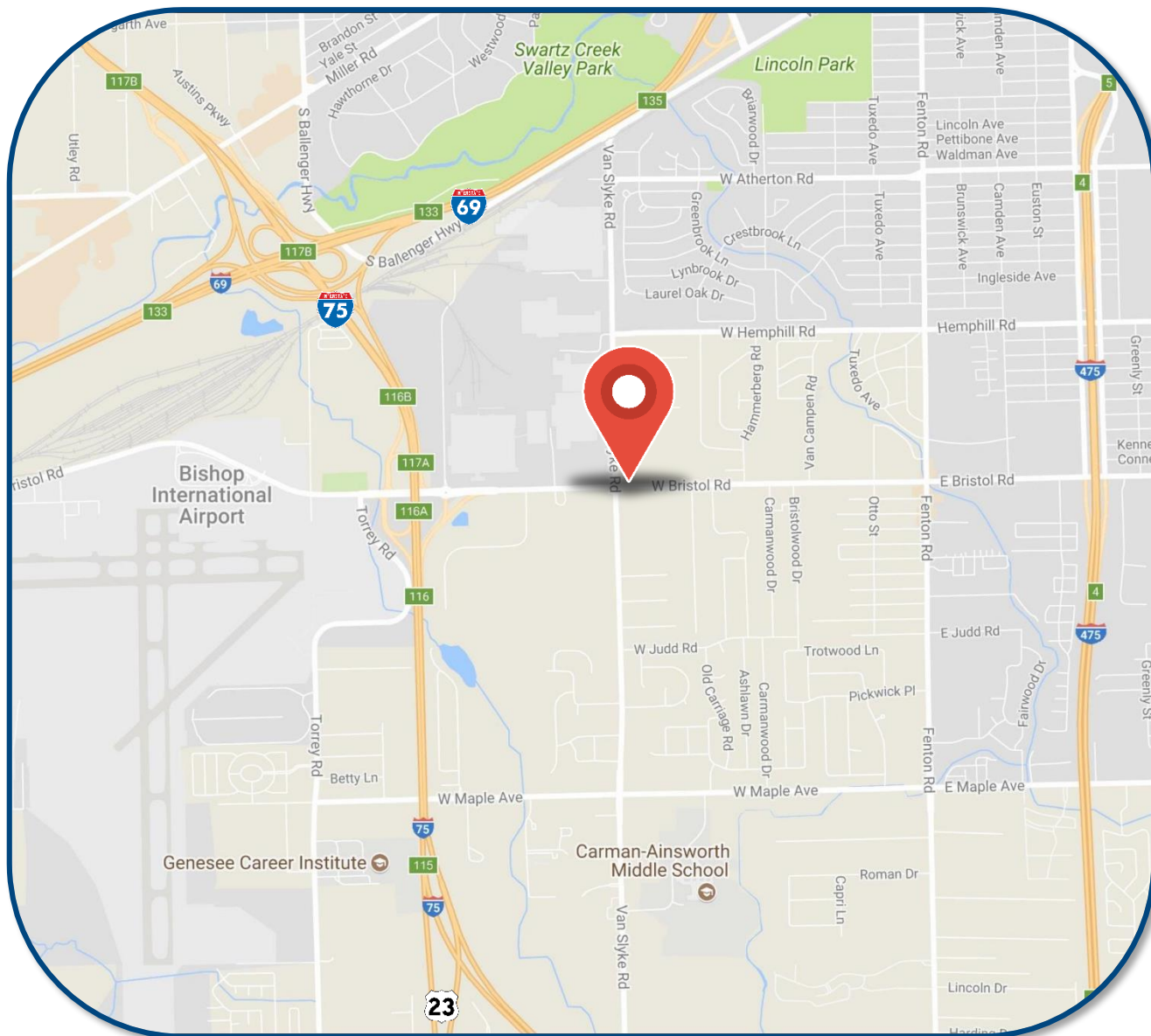
FOR SALE > VACANT LAND

2.23 ACRES

1508 WEST BRISTOL ROAD | FLINT TOWNSHIP, MICHIGAN



> LOCATION MAP



BEN HUBERT

PHONE 248 540 1000 EXT 1864

EMAIL ben.hubert@colliers.com



BEN ROSENZWEIG

PHONE 248 540 1000 EXT 1866

EMAIL ben.rosenzweig@colliers.com

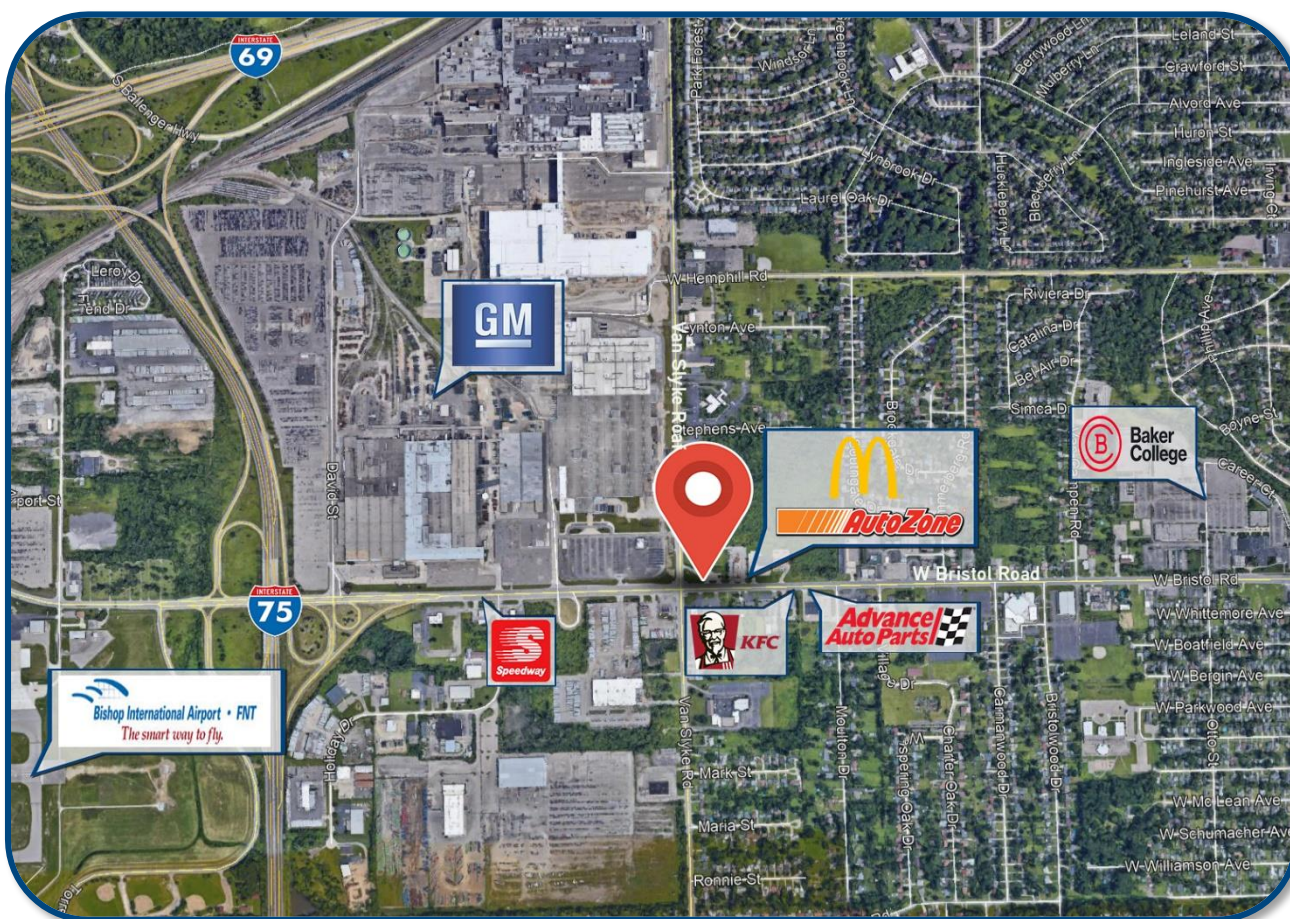
FOR SALE > VACANT LAND

2.23 ACRES

1508 WEST BRISTOL ROAD | FLINT TOWNSHIP, MICHIGAN

Colliers
INTERNATIONAL

> AREA AMENITIES



BEN HUBERT

PHONE 248 540 1000 EXT 1864

EMAIL ben.hubert@colliers.com

Colliers
INTERNATIONAL

BEN ROSENZWEIG

PHONE 248 540 1000 EXT 1866

EMAIL ben.rosenzweig@colliers.com

SUMMARY PROFILE

2000-2010 Census, 2017 Estimates with 2022 Projections

Calculated using Weighted Block Centroid from Block Groups



Lat/Lon: 42.9741/-83.7122

RS1

1508 W Bristol Rd Flint, MI 48507		1 mi radius	3 mi radius	5 mi radius
POPULATION	2017 Estimated Population	5,846	52,135	129,593
	2022 Projected Population	5,586	51,194	130,279
	2010 Census Population	6,015	53,624	134,321
	2000 Census Population	6,308	58,695	146,357
	Projected Annual Growth 2017 to 2022	-0.9%	-0.4%	0.1%
	Historical Annual Growth 2000 to 2017	-0.4%	-0.7%	-0.7%
	2017 Median Age	38.1	36	36.4
HOUSEHOLDS	2017 Estimated Households	2,400	21,691	54,377
	2022 Projected Households	2,365	22,027	56,349
	2010 Census Households	2,453	21,935	55,025
	2000 Census Households	2,581	24,472	59,556
	Projected Annual Growth 2017 to 2022	-0.3%	0.3%	0.7%
	Historical Annual Growth 2000 to 2017	-0.4%	-0.7%	-0.5%
RACE AND ETHNICITY	2017 Estimated White	74.7%	73.8%	60.0%
	2017 Estimated Black or African American	19.8%	19.7%	33.4%
	2017 Estimated Asian or Pacific Islander	0.5%	0.9%	1.3%
	2017 Estimated American Indian or Native Alaskan	0.4%	0.6%	0.5%
	2017 Estimated Other Races	4.7%	5.0%	4.8%
	2017 Estimated Hispanic	4.2%	4.3%	3.9%
INCOME	2017 Estimated Average Household Income	\$53,155	\$54,355	\$53,885
	2017 Estimated Median Household Income	\$43,717	\$37,641	\$39,430
	2017 Estimated Per Capita Income	\$22,540	\$23,403	\$23,194
EDUCATION (AGE 25+)	2017 Estimated Elementary (Grade Level 0 to 8)	2.6%	2.9%	3.1%
	2017 Estimated Some High School (Grade Level 9 to 11)	10.1%	9.5%	8.6%
	2017 Estimated High School Graduate	37.1%	36.6%	34.5%
	2017 Estimated Some College	24.4%	28.0%	27.9%
	2017 Estimated Associates Degree Only	8.9%	9.3%	9.4%
	2017 Estimated Bachelors Degree Only	12.3%	9.2%	10.5%
	2017 Estimated Graduate Degree	4.5%	4.5%	6.1%
BUSINESS	2017 Estimated Total Businesses	241	2,977	6,993
	2017 Estimated Total Employees	3,139	36,816	80,846
	2017 Estimated Employee Population per Business	13.0	12.4	11.6
	2017 Estimated Residential Population per Business	24.2	17.5	18.5

This report was produced using data from private and government sources deemed to be reliable. The information herein is provided without representation or warranty.