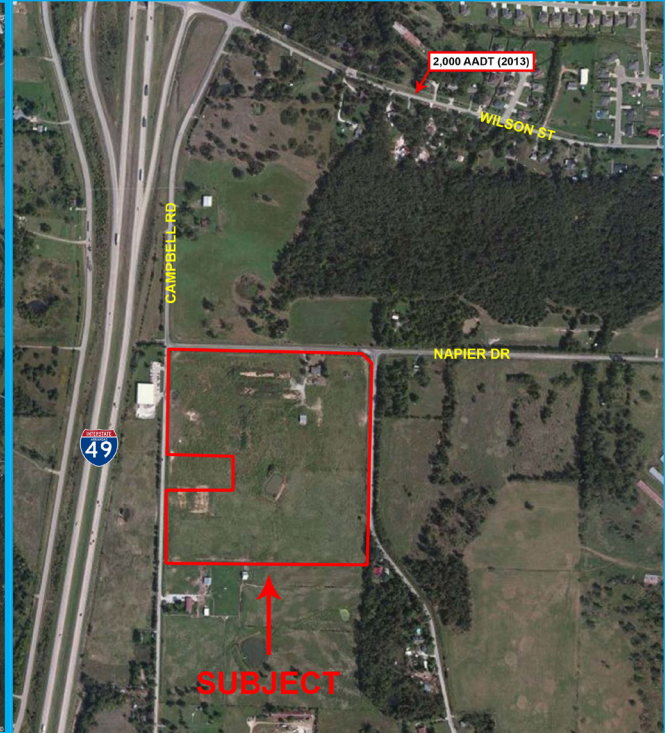
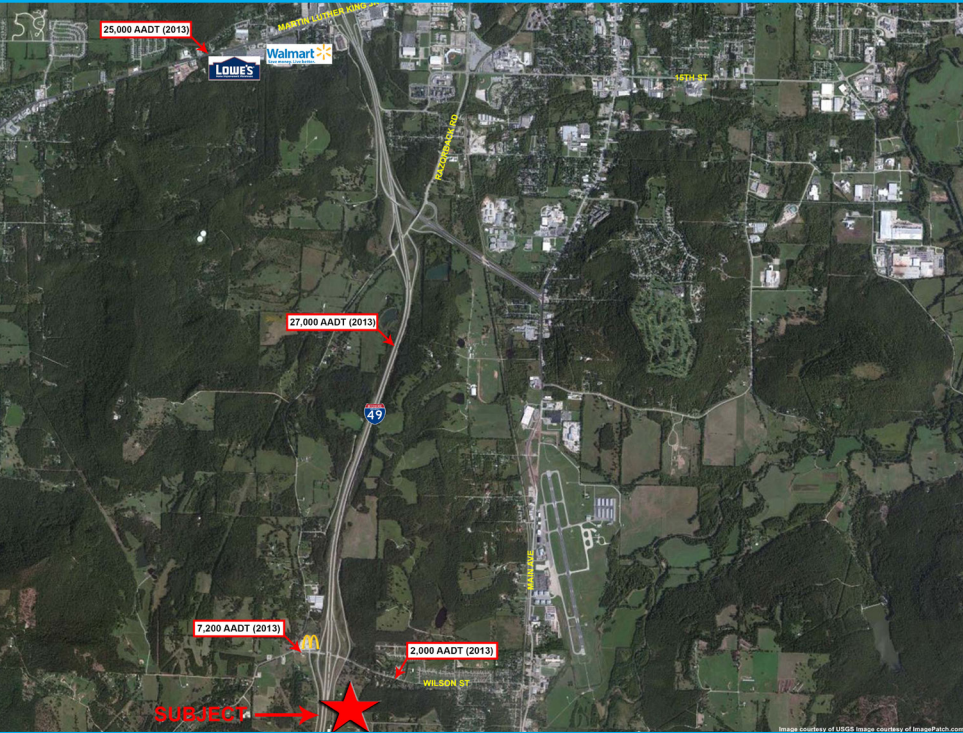


FOR SALE > LAND

965 W. Napier Drive

GREENLAND, AR



Property Information

Price > \$940,000

- > Up to 35.68 acres
- > Excellent Interstate 49 Visibility
- > Great Interstate 49 Access
- > Zoned Commercial and Residential
- > Gentle Topography
- > Only \$26,345 per acre for Interstate 49 property

Contact

RAMSAY BALL
PRINCIPAL | ARKANSAS
DIR: 479.845.1502
MOB: 479.640.6405
ramsay.ball@colliers.com

This document has been prepared by Colliers International for advertising and general information only. Colliers International makes no guarantees, representations or warranties of any kind, expressed or implied, regarding the information including, but not limited to, warranties of content, accuracy and reliability. Any interested party should undertake their own inquiries as to the accuracy of the information. Colliers International excludes unequivocally all inferred or implied terms, conditions and warranties arising out of this document and excludes all liability for loss and damages arising therefrom. This publication is the copyrighted property of Colliers International and/or its licensor(s). ©2010. All rights reserved.

COLLIERS INTERNATIONAL
4204 S Pinnacle Hills Pkwy, Ste 102
Rogers, AR 72758
www.colliers.com/arkansas

