

FOR SALE > LAND

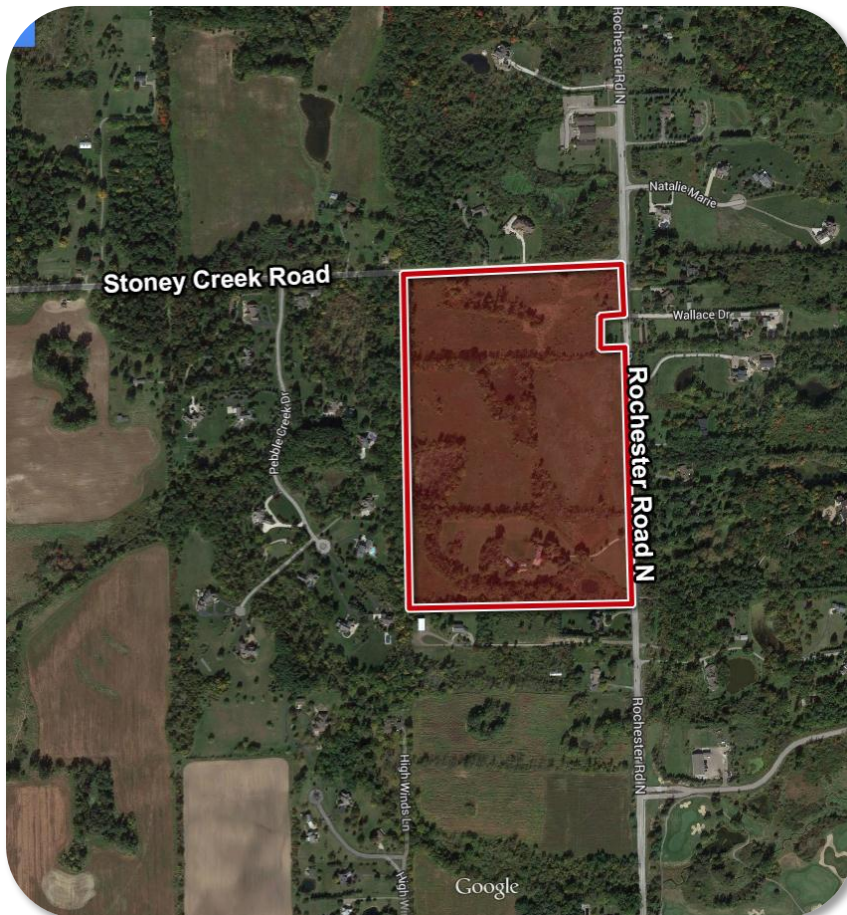
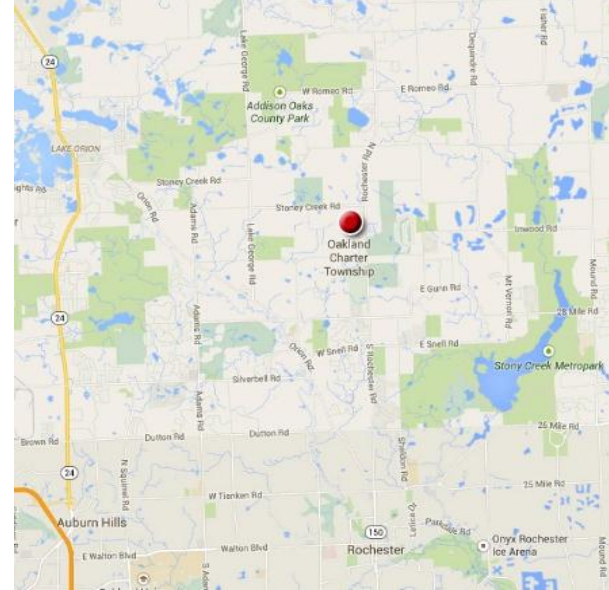
58 Acres Available



SWC ROCHESTER ROAD & STONEY CREEK ROAD, OAKLAND TWP., MICHIGAN

Building Amenities

- > 58.70 Acres
- > Rochester Community School District
- > Close to Chrysler Automotive Hub
- > Less than Eight Miles Away From the Palace of Auburn Hills



Contact Us

ROBERT BADGERO
248 540 1000 | Ext. 1810
SOUTHFIELD, MI
robert.badgero@colliers.com

COLLIERS INTERNATIONAL
2 Corporate Drive
Suite 300
Southfield, MI 48076
www.colliers.com

FOR SALE > LAND

58 Acres Available

SWC ROCHESTER ROAD & STONEY CREEK ROAD, OAKLAND TWP., MICHIGAN

Plat Map



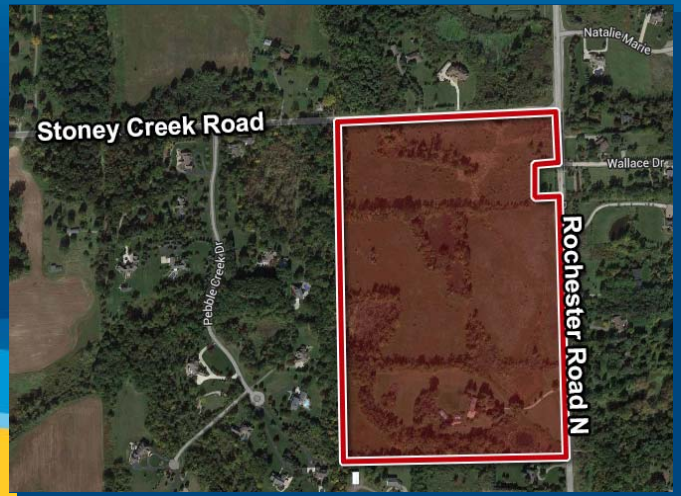
ROBERT BADGERO
248 540 1000 | Ext 1810
Southfield, MI 48076
robert.badgero@colliers.com

COLLIERS INTERNATIONAL
2 Corporate Drive, Suite 300
Southfield, MI 48076
www.colliers.com

Land Availability

For Sale

Vacant Land SWC Rochester Rd & Stoney Creek Rd
Oakland Township, MI 48363

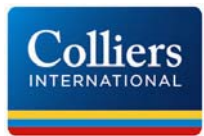


Sale Price: \$2,900,000
Sale Price /Acre: \$49,404
Sale Price /SF:
Acreage-Min: 15.40
Acreage-Max: 58.70
Dimensions:
Zoning: Residential
Possible Use: Residential
Utilities: Gas & Electric
Property Taxes: \$8,982.79
School District: Rochester Community Schools

County: Oakland
Crossroads: Rochester Rd. & Stoney Creek Rd
Parcel #: 10-15-200-005, 10-15-200-006, 10-15-200-007

58.70 Acres.
Rochester Community School District.
Close to Chrysler Automotive Hub.
Less than Eight Miles Away From the Palace of Auburn Hills.

For more information, contact:



Robert Badgero
robert.badgero@colliers.com

(248) 540-1000

2 Corporate Drive
Suite 300
Southfield, MI 48076
248 540 1000

400 E. Washington St.
Ann Arbor, MI 48104
734 994 3100

www.colliers.com

Traffic Count:

| | |
|-------------------|--------|
| Rochester Road | 11,387 |
| Stoney Creek Road | 1,001 |

Demographics:

5 Mile

| | |
|----------------|----------|
| Population: | 48,602 |
| DT Population: | 6,878 |
| # Households: | 17,370 |
| HH Income: | \$90,710 |