

KBS

Millrock East

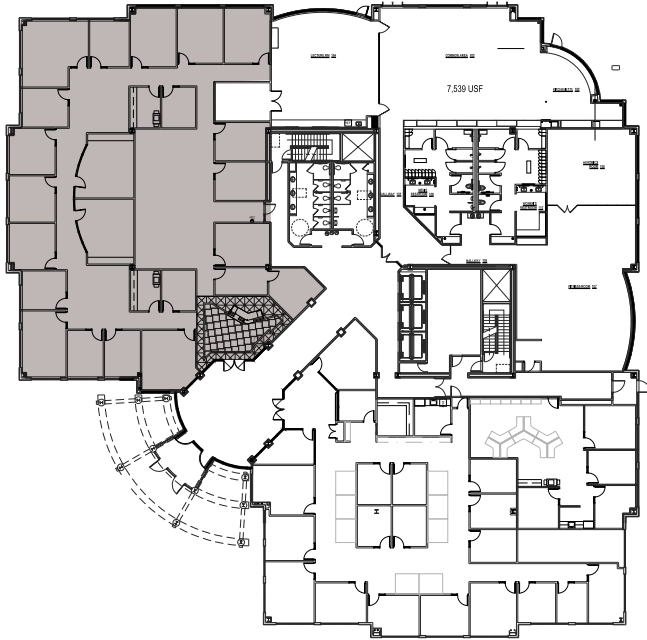
6510 South Millrock Drive



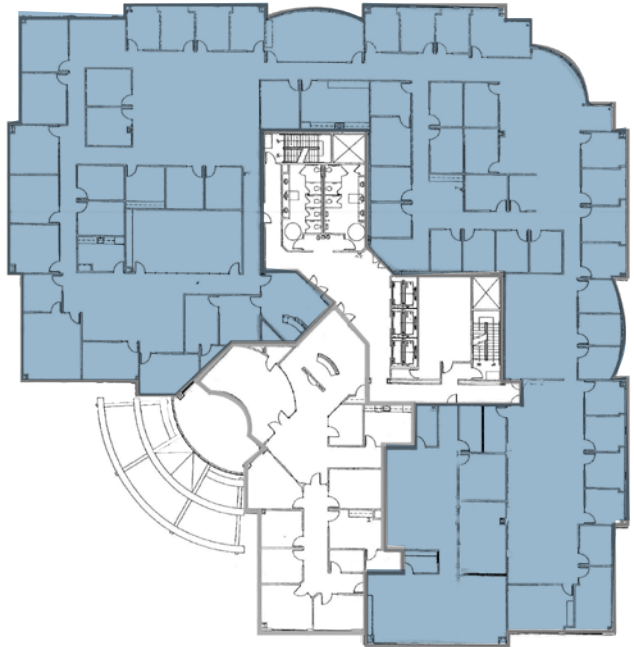


# Floor Plans

FIRST FLOOR - 9,751 RSF



SECOND FLOOR - 24,479 RSF ( JAN 31 2019 )



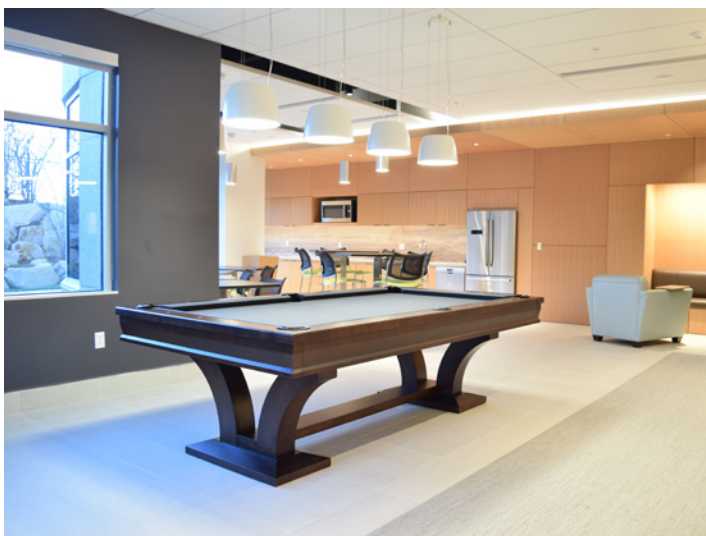
LOBBY UPGRADES COMMENCING JUNE 2018



# Property Highlights

- Available suites:
  - Suite 150: 9,751 RSF
  - Suite 200: 24,479 RSF
- \$34.00/SF full service lease rate
- +28,200 rentable square feet typical floor plates
- 5/1,000 parking ratio
- New fitness and conference facility
- Unbeatable views of the Wasatch Mountains and Salt Lake Valley
- Millrock Park offers a 22 acre campus with over six acres of green space
- Immediate access to I-215, fifteen minute drive to Salt Lake International Airport, downtown
- Salt Lake City and ski resorts
- Walking distance to many amenities including: Hyatt Place, Starbucks, Cafe Zupas, Subway, Trio, Zions Bank, Happy Sumo and many more

## NEW BUSINESS LOUNGE AND FITNESS CENTER







## LOCAL AMENITIES







### RESTAURANTS

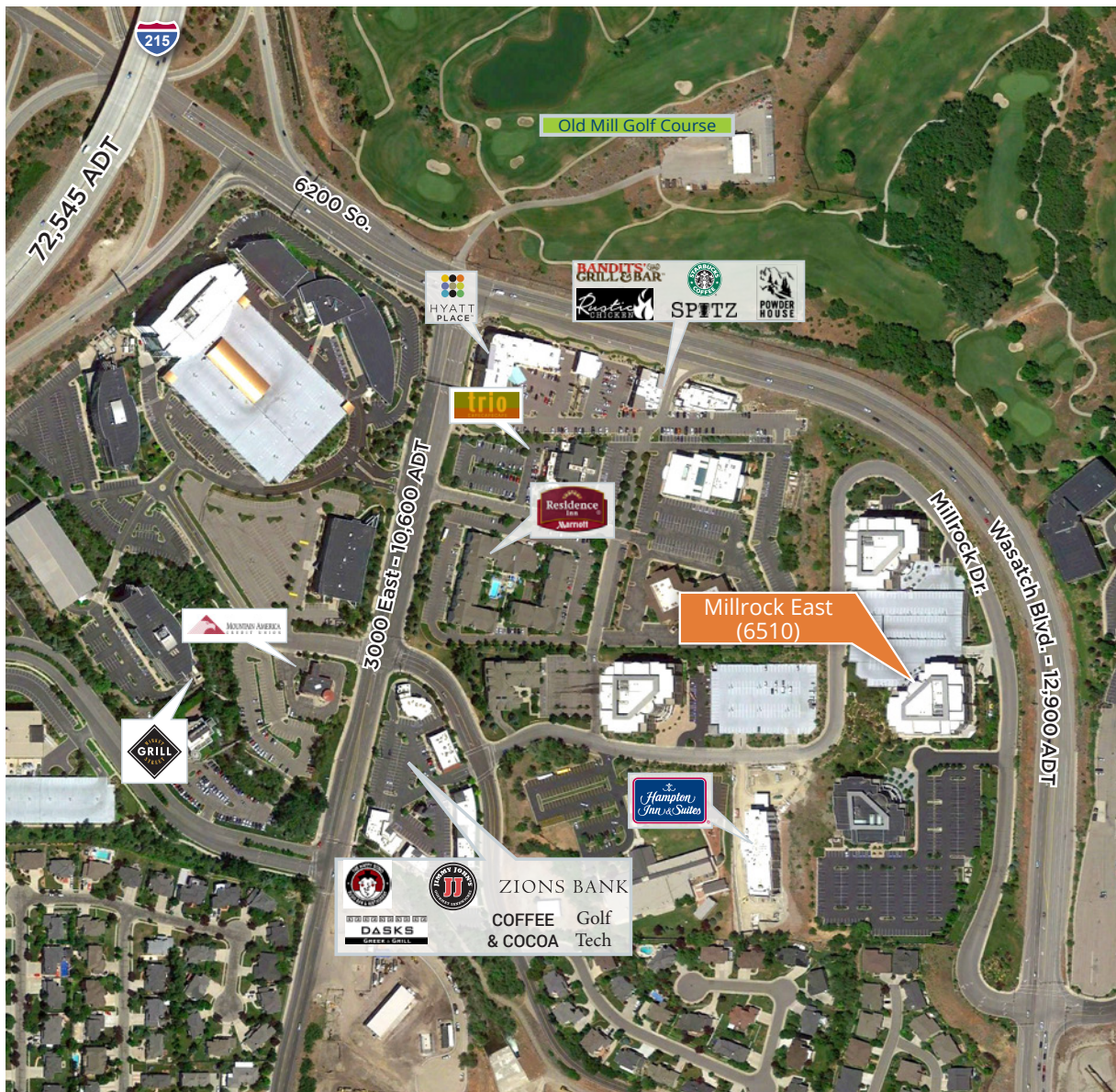
-  Rustic Chicken
-  Spitz Mediterranean
-  Starbuck's
-  Trio Cafe
-  Bandit's Grill & Bar
-  Jimmy John's
-  Coffee and Cocoa
-  Dasks Greek Restaurant
-  Happy Sumo
-  Thai Basil
-  Market Street Grill

### HOTELS

-  Hyatt Place
-  Marriott Residence Inn
-  Hampton Inn (Q4 2017)

### SERVICES/RETAIL

-  Powder House
-  Zion's Bank
-  Mountain America CU
-  American Family Insurance
-  Taylor Optical
-  Health Food Store



# KBS

KBS.com

## FOR MORE INFORMATION

**Brandon Fugal**

+1 801 947 8300

brandon.fugal@colliers.com

**Jordan Wall**

+1 801 453 6833

jordan.wall@colliers.com

**Josh Smith**

+1 801 453 6823

josh.smith@colliers.com



www.colliers.com