

FOR LEASE

# 2222 Cottondale Lane, Little Rock, AR

## For Lease: Riverdale Professional Office Space with River Views

### Features

- Suite size: 2,930 SF
- Lease rate: \$22.00/SF, FSG
- Front door parking available
- Located in Riverdale neighborhood with views of the Arkansas River
- Easy access to local restaurants and retail shops of the area

### Contact us

**Justin Bentley, CCIM, SIOR**  
+1 501 850 0739  
justin.bentley@ar.colliers.com

**Todd Rice, CCIM**  
+1 501 850 0702  
todd.rice@ar.colliers.com

**Claire Huchingson**  
+1 501 372 6161  
claire.huchingson@ar.colliers.com

1 Allied Drive, Suite 1500,  
Little Rock, AR 72202  
P: +1 501 372 6161  
colliers.com/arkansas



# Neighborhood Map



## Area Demographics



### Estimated Population (2025)

1 Mile	3 Mile	5 Mile
6,983	67,805	135,982



### Estimated Households (2025)

1 Mile	3 Mile	5 Mile
3,914	32,025	61,865



### Est. Avg Household Income (2025)

1 Mile	3 Mile	5 Mile
\$138,688	\$94,700	\$90,867

# Property Photos



**5 minutes**  
to downtown  
Little Rock

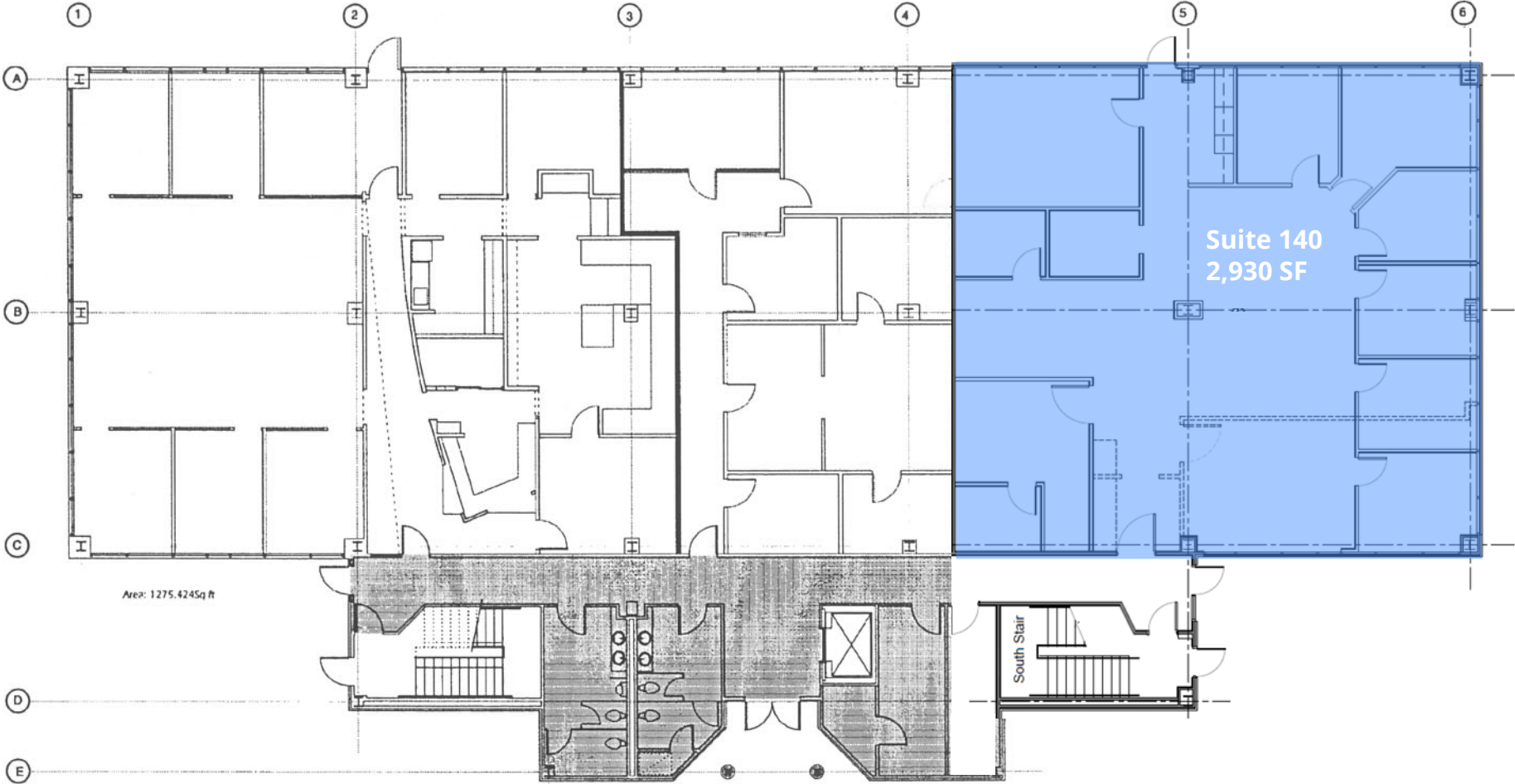


**Riverfront views**



**Located**  
in **Riverdale**  
Neighborhood

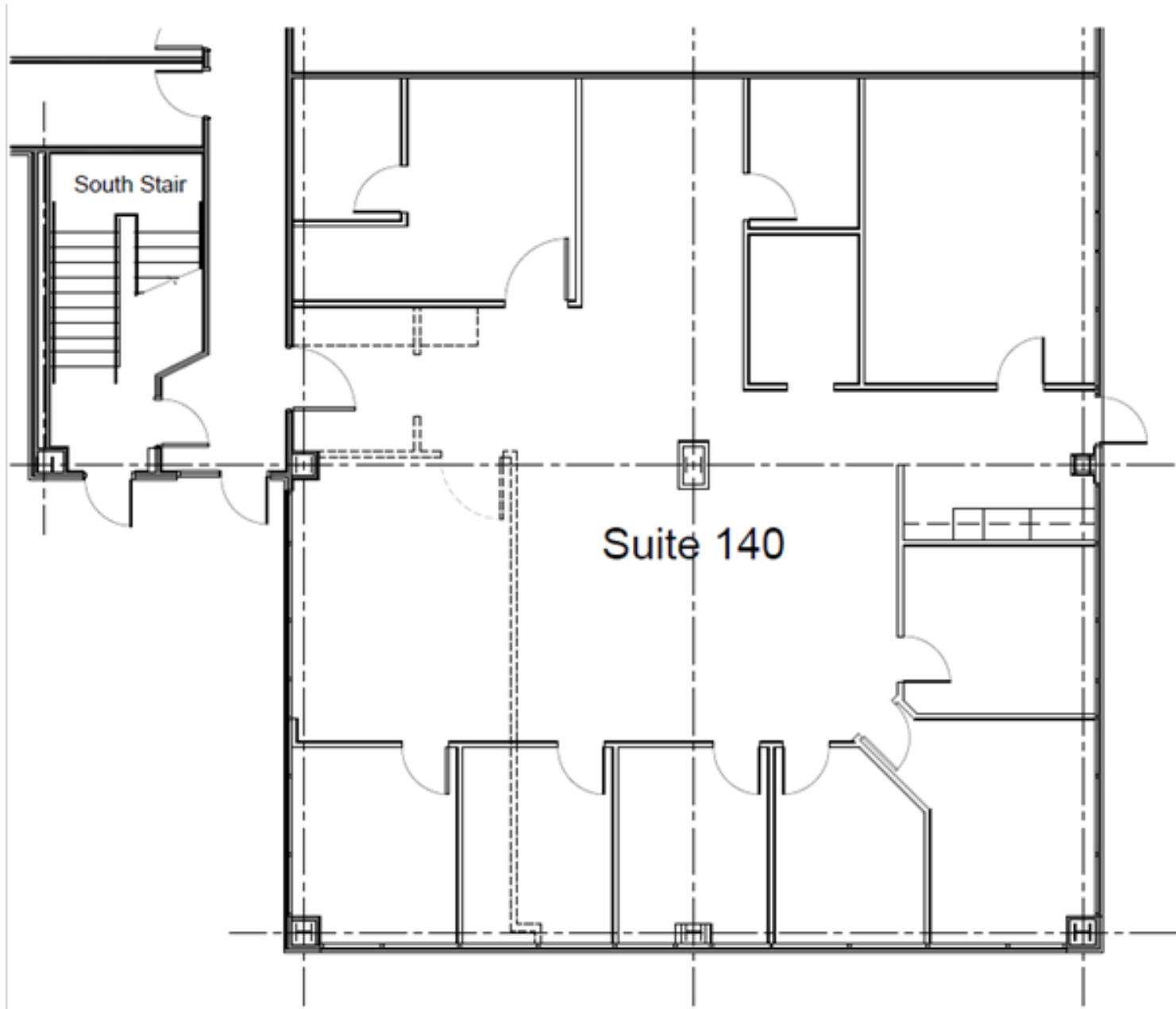
# Floor Plan



**WINROCK PLACE**  
**FIRST FLOOR PLAN**  
1/16" = 1'-0" 1-11-00

 Common Area: 1261 Sq Ft

# Suite Plan | 2,930 SF



# Riverdale Office

2222 COTTONDALE LANE, LITTLE ROCK, AR



## Contact us:

**Justin Bentley, SIOR, CCIM**  
+1 501 850 0739  
[justin.bentley@ar.colliers.com](mailto:justin.bentley@ar.colliers.com)

**Todd Rice, CCIM**  
+1 501 850 0702  
[todd.rice@ar.colliers.com](mailto:todd.rice@ar.colliers.com)

**Claire Huchingson**  
+1 501 372 6161  
[claire.huchingson@ar.colliers.com](mailto:claire.huchingson@ar.colliers.com)

This document has been prepared by Colliers International for advertising and general information only. Colliers International makes no guarantees, representations or warranties of any kind, expressed or implied, regarding the information including, but not limited to, warranties of content, accuracy and reliability. Any interested party should undertake their own inquiries as to the accuracy of the information. Colliers International excludes unequivocally all inferred or implied terms, conditions and warranties arising out of this document and excludes all liability for loss and damages arising there from. This publication is the copyrighted property of Colliers International and/or its licensor(s). ©2021. All rights reserved.

**Colliers | Arkansas**  
1 Allied Drive | Suite 1500  
Little Rock, AR 72202  
P: +1 501 372 6161

**Colliers**